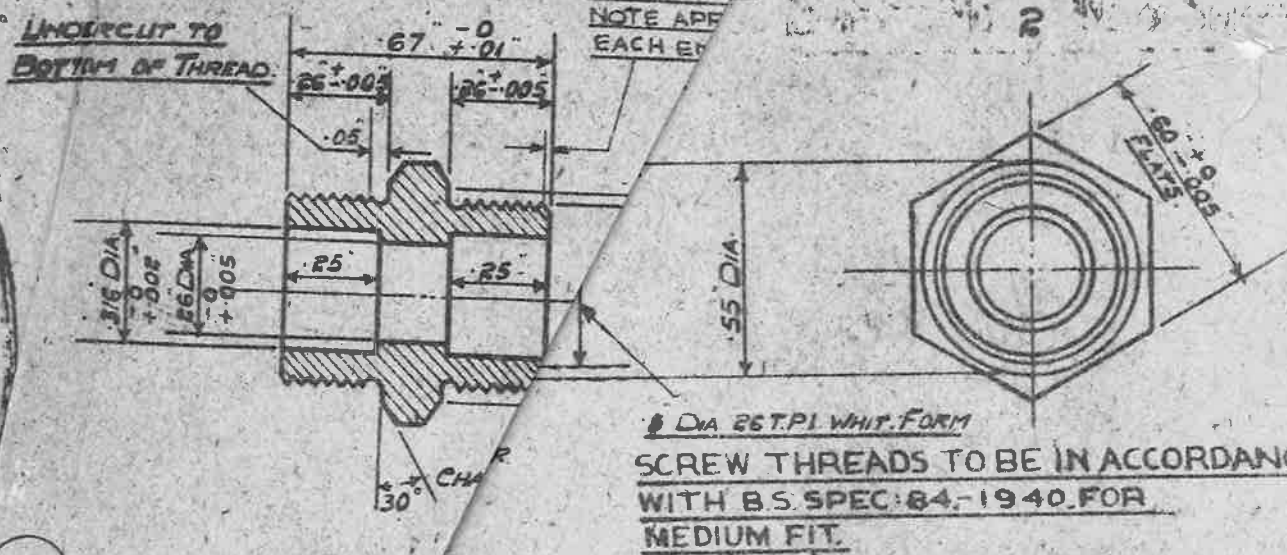


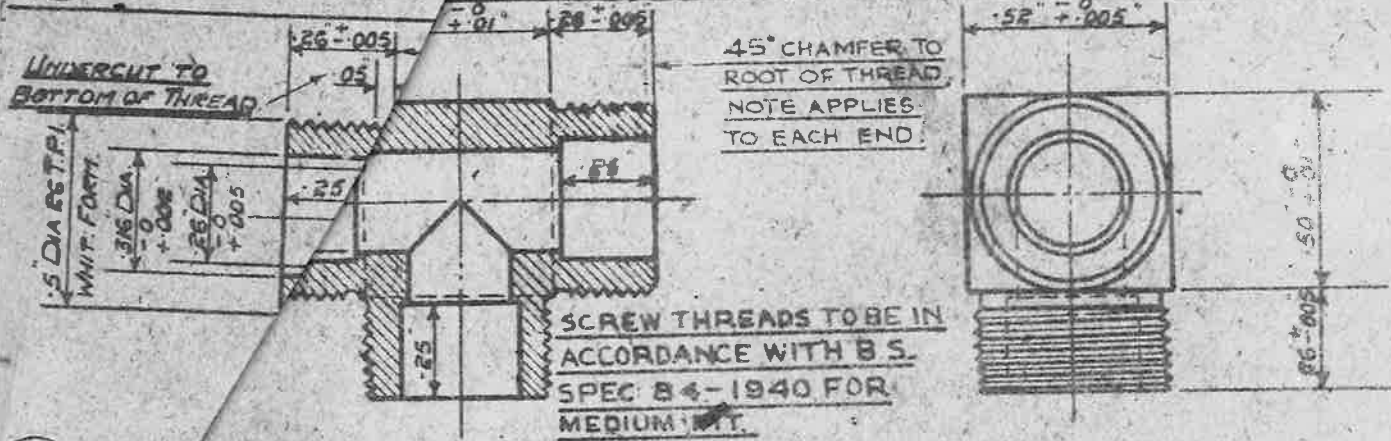
7-11-30  
F.S. WISLEY



1/8 DIA 26 T.P.I. WHIT. FORM  
SCREW THREADS TO BE IN ACCORDANCE WITH B.S. SPEC: 84-1940 FOR MEDIUM FIT.

1 STRAIGHT UNION BODY

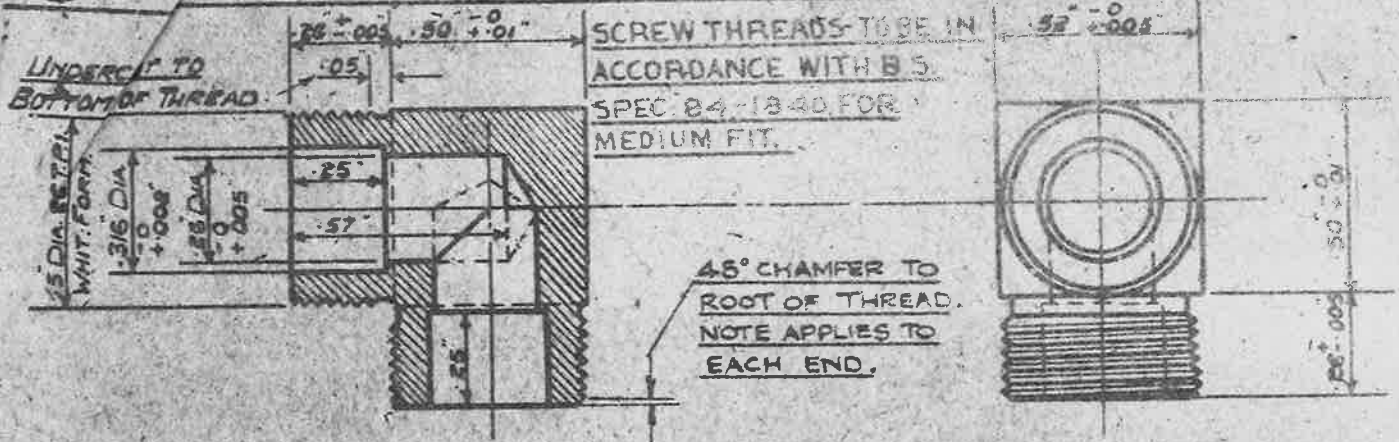
SPECIFICATION: THE MATERIAL TO BE BRASS TO B.S. SPEC 249, OR 251. (LATEST ISSUE)



SCREW THREADS TO BE IN ACCORDANCE WITH B.S. SPEC 84-1940 FOR MEDIUM FIT.

2 TEE UNION BODY

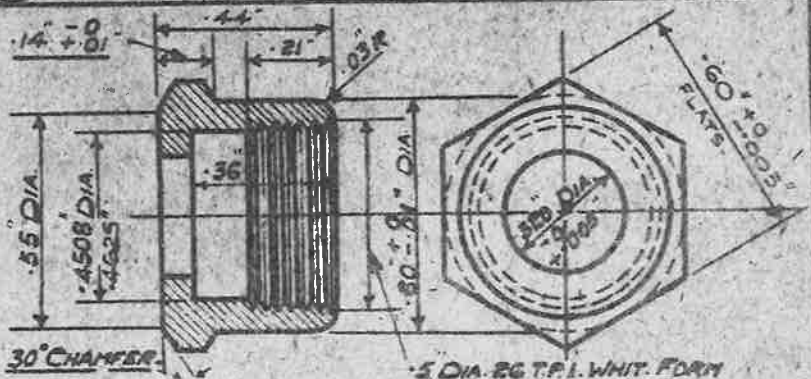
SPECIFICATION: THE MATERIAL TO BE BRASS TO B.S. SPEC 249, OR 251. (LATEST ISSUE)



SCREW THREADS TO BE IN ACCORDANCE WITH B.S. SPEC 84-1940 FOR MEDIUM FIT.

3 ELBOW UNION BODY

SPECIFICATION: THE MATERIAL TO BE BRASS TO B.S. SPEC 249, OR 251. (LATEST ISSUE)



1/8 DIA. 26 T.P.I. WHIT. FORM  
SCREW THREADS TO BE IN ACCORDANCE WITH B.S. SPEC: 84-1940 FOR MEDIUM FIT.

\* TO SLIDE ON A 1/8 DIA. MANDREL AND WHEN SO MOUNTED TO ENTER A HOLE .45 DIA.



SPECIFICATION: THE MATERIAL TO BE RUBBER TO D.T.R. SPECIFICATION 321.

4 UNION NUT

SPECIFICATION: THE MATERIAL TO BE BRASS TO B.S. SPEC 249, OR 251. (LATEST ISSUE)

5 BUSH

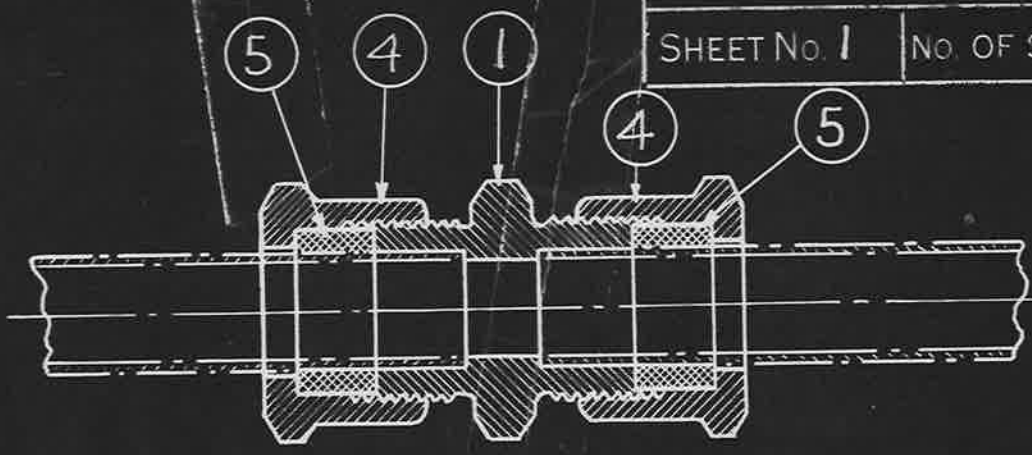
(LATEST ISSUE)

DETAILS OF MARK I (BRASS)  
LOW PRESSURE UNIONS FOR 3/16" TUBING

DRAWN N.S. STARK  
R.R. TRACED R.G.  
7-1-33  
GW 14-30

ISSUE	7	0	9
ALTER	AGS/226	AGS/254	AGS/273
DATE	14.11.42	14.11.42	18.11.43
BY	AGS	AGS	A.S.H.

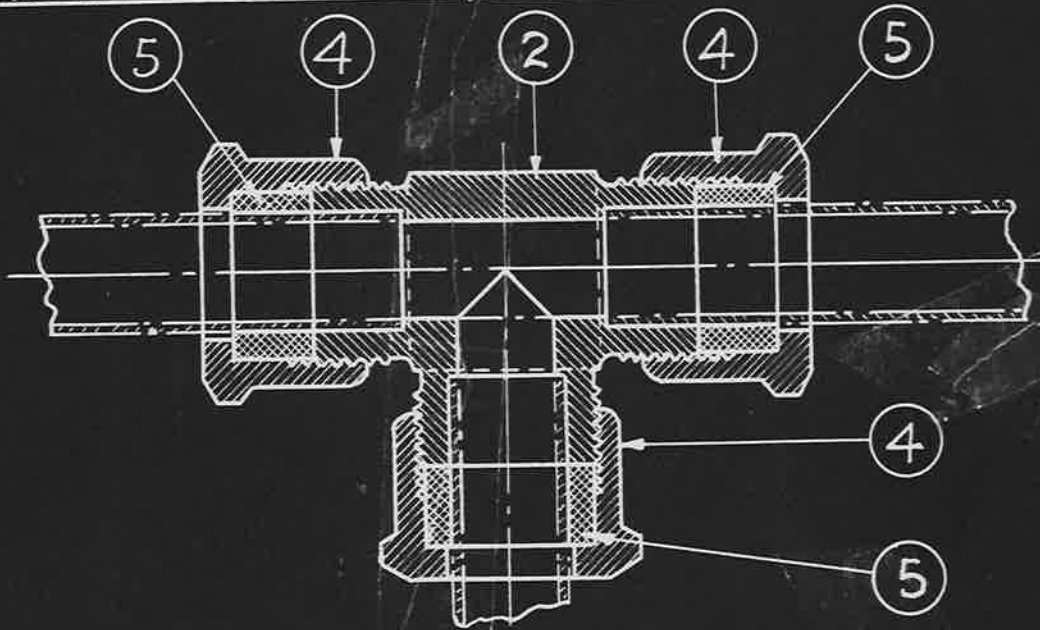
7-11-30  
F.S. MATTIX



STRAIGHT UNION

ONE COMPLETE UNION CONSISTS OF :-

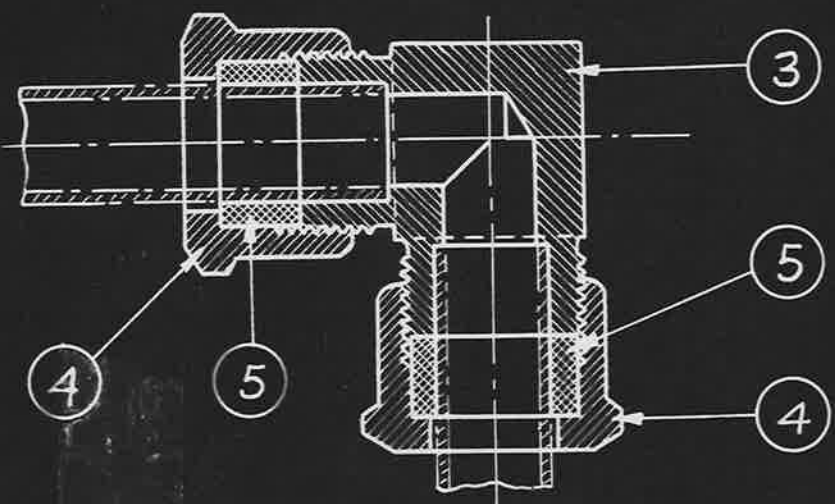
PART 1- STRAIGHT UNION BODY- 1 OFF, PART 4- UNION NUT- 2 OFF, PART 5- BUSH- 2 OFF.



TEE UNION

ONE COMPLETE UNION CONSISTS OF :-

PART 2- TEE UNION BODY- 1 OFF, PART 4- UNION NUT- 3 OFF, PART 5- BUSH- 3 OFF



ELBOW UNION

ONE COMPLETE UNION CONSISTS OF :-

PART 3- ELBOW UNION- 1 OFF, PART 4- UNION NUT- 2 OFF, PART 5- BUSH- 2 OFF

FOR DURAL UNIONS SEE A.G.S. 838.

ISSUED BY DRAWING OFFICE DIRECTORATE OF TECHNICAL DEVELOPMENT AIR MINISTRY	TITLE :- ASSEMBLY OF MARK 1 (BRASS) LOW PRESSURE UNIONS FOR 5/16 TUBING		RETRACED FOR A.P.C.	DRAWN W.S. STARK	TRACED E.A. LANG 7-10-30
	ISSUE No.	1		CHECKED G. ANDERSON	APPROVED <i>[Signature]</i> 14-11-30
	ALTERATION	A.G.S. 231 15-11-30			