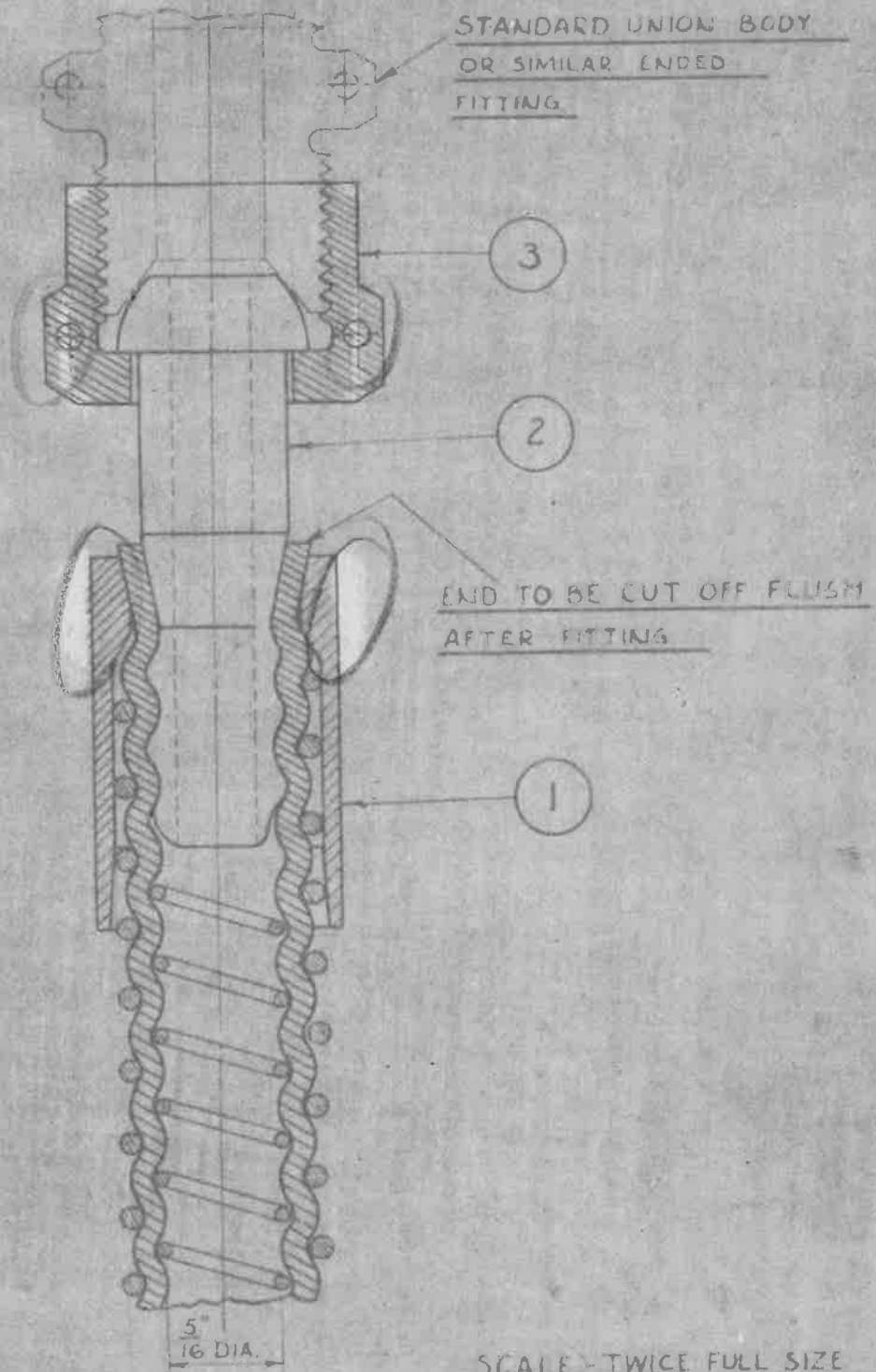


19 11 30
F.S. WIGLEY



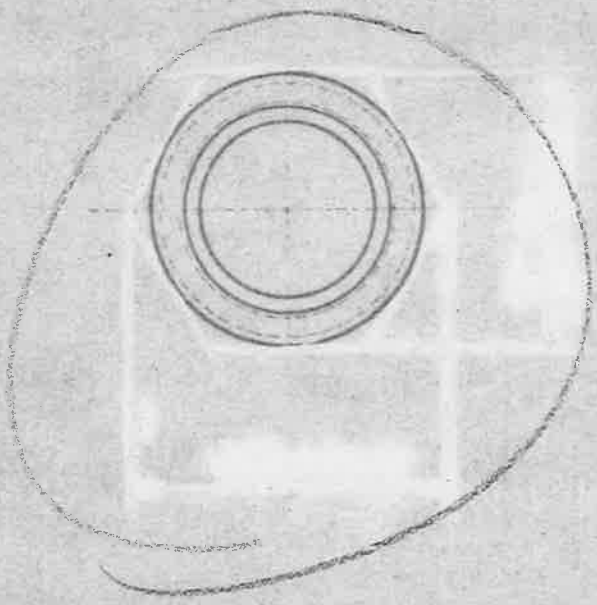
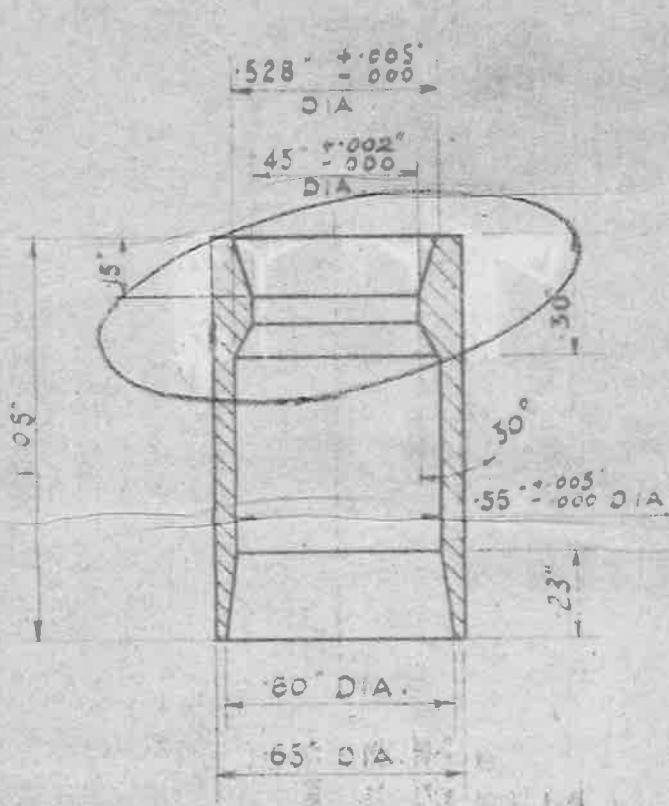
FOR PARTICULARS OF BONDING SEE S.I.S 1637 SHEET 3.

SCALE: TWICE FULL SIZE

ONE COMPLETE END CONNECTION CONSISTS OF PARTS 1, 2 & 3

PART N°	A.G.S. N°	DESCRIPTION	QUANTITY	REMARKS.
1	879, SHEET N°2 PART 1	SLEEVE	1	
2	879, SHEET N°2 PART 2	UNION PIECE	1	
3	1187, MARK "BB"	UNION NUT	1	

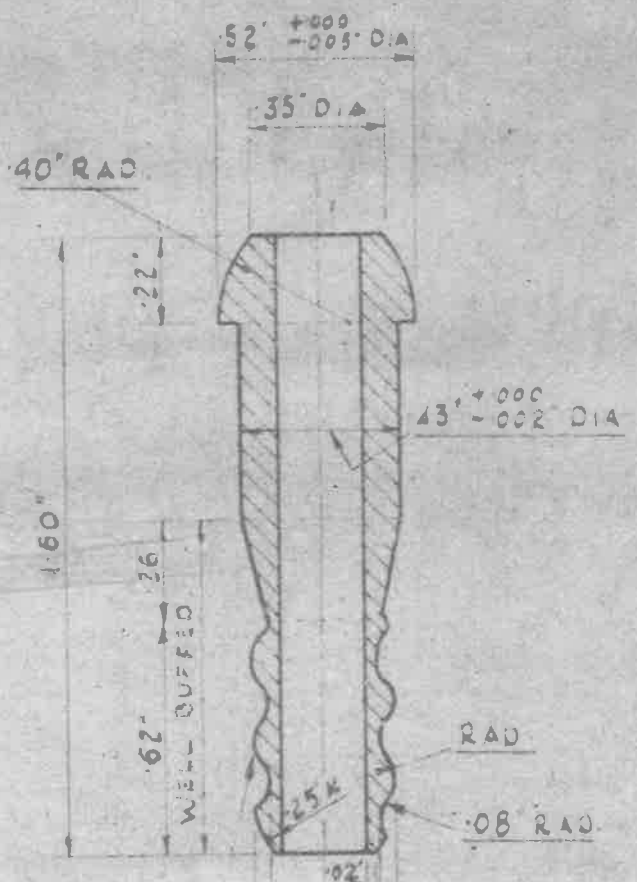
ISSUED BY DRAWING OFFICE, DIRECTORATE OF TECHNICAL DEVELOPMENT, AIR MINISTRY	TITLE— PETROFLEX END CONNECTION FOR 1/2 CLASS "1" TUBING. ASSEMBLY					RETRACED FOR APC	DRAWN J.M. THOMSON	TRACED FAG/13.1.39
	ISSUE No.	2	3	4	5		CHECKED T.M. WALKER, RD. DISTABLE RE-CH.	APPROVED G.W. 25.11.30
ALTERATION:	AGS/230	AGS/1183		AGS NO 320	AGS 594			



TO BE ANODICALLY TREATED

SPECIFICATION:-
DURALUMIN TO B.S. SPEC. L.1. (LATEST ISSUE)
OR D.T.D. 423 (LATEST ISSUE)

① SLEEVE



MOS

TO BE ANODICALLY TREATED

R.H. SINGLE START 29 ±.005 DIA AT BOTTOM
HEICAL THREAD OF THREAD
5 T.P.I. 375 ±.005 DIA AT TOP OF
THREAD

SPECIFICATION:-
DURALUMIN TO B.S. SPEC. L.1. (LATEST ISSUE)
OR D.T.D. 423 (LATEST ISSUE)

② UNION PIECE

ISSUED BY DRAWING OFFICE DIRECTORATE OF TECHNICAL DEVELOPMENT AIR MINISTRY	TITLE— PETROFLEX END CONNECTION DETAILS FOR 1/8" CLASS 1 TUBING				RETRACTED FOR A.G.C.	DRAWN J.M. THOMSON	RE-TRACED P.W. 10-1-59
	CLASS 110	1/8"	2	3	4	T.M. WALKER RE-CH. 25-11-59	APPROVED GW 25-11-59
	A.G.S.	A.S. No	25	NO	IMD/N		