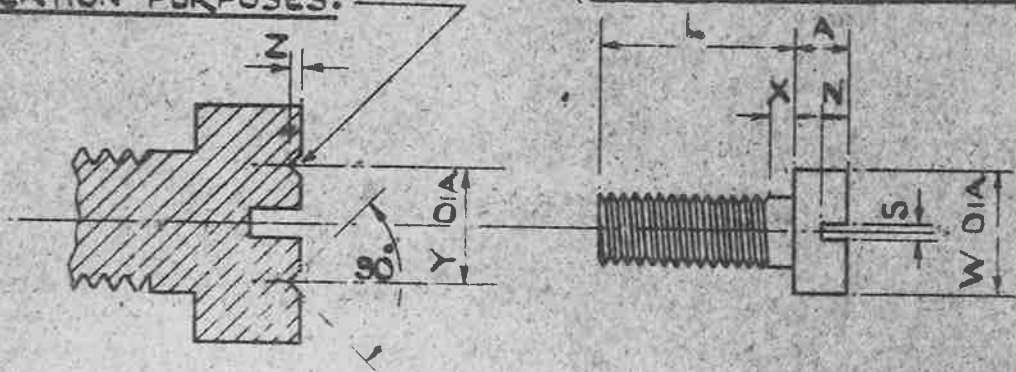


N^o 0, AND 2 B.A. SCREWS MADE FROM STEEL TO SPEC: S.80. ARE TO BE MARKED WITH AN ANNULAR GROOVE FOR IDENTIFICATION PURPOSES.

MAP AGS. N^o 896
SHEET N^o 1 | N^o OF SHEETS 1



B.A. NUMBERS

	0	1	2	4	6	8	10
W	.413"	.365"	.324"	.248"	.193"	.152"	.117"
	.405"	.357"	.316"	.242"	.188"	.147"	.113"
A	.177"	.156"	.139"	.106"	.083"	.065"	.050"
	.169"	.149"	.132"	.100"	.078"	.061"	.046"
S	.052"	.052"	.044"	.035"	.026"	.026"	.020"
	.044"	.044"	.037"	.029"	.022"	.022"	.016"
N	.096"	.084"	.075"	.057"	.044"	.035"	.027"
	.083"	.072"	.064"	.049"	.038"	.030"	.023"
X	.07"	.06"	.06"	.04"	.03"	.03"	.02"
Y	.19"	.17"	.15"				
Z	.02"	.02"	.015"				
LENGTH L	PART NUMBERS.						
3/16"	1	1A	10	19	28	37	46
1/4"	2	2A	11	20	29	38	47
3/8"	3	3A	12	21	30	39	48
1/2"	4	4A	13	22	31	40	49
5/8"	5	5A	14	23	32	41	50
3/4"	6	6A	15	24	33	42	51
7/8"	7	7A	16	25	34	43	
1"	8	8A	17	26	35	44	
1 1/4"	9	9A	18	27	36	45	

NOTE:- FOR 6 B.A. & SMALLER SIZES COMMERCIAL THREADS & LIMITS MAY BE ACCEPTED INSTEAD OF THOSE STRICTLY IN ACCORDANCE WITH THE SPECIFICATION STATED.

MATERIAL :- HIGH CHROMIUM STEEL (NON-CORRODING) TO B.S. SPEC. S.80 (LATEST ISSUE) OR HIGH NICKEL COPPER ALLOY TO SPEC. D.T.D. 204 (LATEST ISSUE).
SCREWS THREADS :- BRITISH ASSOCIATION (B.A.) TO B.S. SPEC. N^o 93.

M.C. Hope

ISSUED BY DRAWING OFFICE DIRECTORATE OF TECHNICAL DEVELOPMENT M.A.P.	TITLE :- CHEESE-HEAD B.A. SCREWS. (STEEL NON-CORRODING)			DRAWN <i>J.A.B.</i>	TRACED R.W. 24/2/60	
	ISSUE N ^o	5	6			7
	ALTER N ^o	AMEND AMEND AMEND 46/249, 105/266, AGS/239				

21-9-34
279620/33

*1500
15/8/36*

ALTER N^o AGS/239 AGS/239 AGS/239
10.10.44