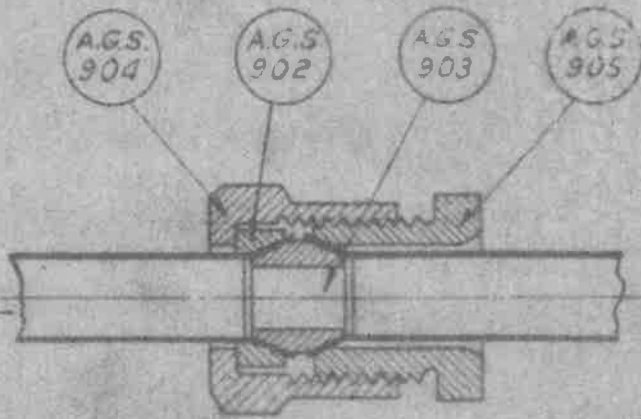


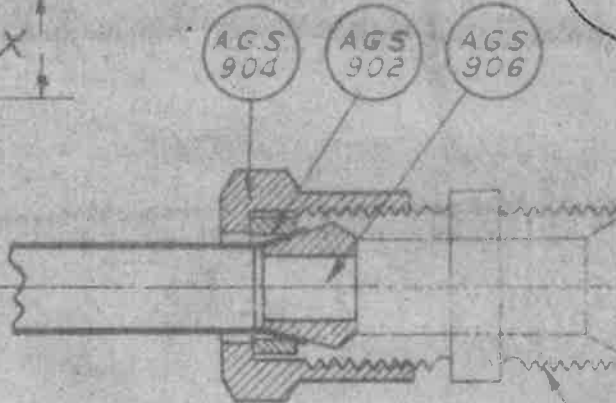
29-11-34

342130/34

METAL PIPE COUPLING



METAL PIPE JOINT



STANDARD UNION BODY
OR SIMILAR END FITTING

OBSOLESCENT.

SUPERSEDED BY AGS 1101.

MARK	A.	B.	B.B.	C.	C.C.	D.	E.	F.	G.	H.	J.	K.
EXTERNAL DIA. OF PIPE	$\frac{3}{16}$	$\frac{1}{4}$	$\frac{5}{16}$	$\frac{3}{8}$	$\frac{7}{16}$	$\frac{1}{2}$	$\frac{5}{8}$	$\frac{3}{4}$	$\frac{7}{8}$	1	$1\frac{1}{4}$	
EXPANDING TOOL	AGS 772	AGS 772	AGS 772	AGS 772	AGS 772	AGS 772	AGS 773	AGS 773	AGS 773	AGS 773	AGS 773	
DIA. MAX	.21"	.3"	.37"	.44"	.5"	.56"	.63"	.82"	.94"	1.07	1.32	1.4
X MIN	.20	.29	.36	.425	.485	.545	.67	.80	.92	1.05	1.30	1.4

NOTE:-

ONLY 20 SWG LIGHT ALLOY TUBING TO B.S. SPEC. T4 (LATEST ISSUE) IS TO BE USED WITH THESE METAL COUPLINGS.

ISSUED BY DRAWING OFFICE DIRECTORATE OF TECHNICAL DEVELOPMENT AIR MINISTRY	TITLE: METAL COUPLINGS (LIGHT ALLOY) ARRANGEMENT				DRAWN M. SHIPPEY	RETRACE LKR 16/1	
	ISSUE N°	1	2	3	4	CHECKED JAI THOMSON	APPROVE G.M. 3/7
	ALTERATION N°	AGS 255	AGS 255	AGS 457	AGS 457	RECHECK K. S. 15/1	