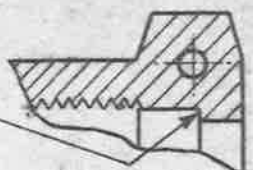


AGS. 904, MARK B, OUTER SLEEVES TO ISSUE 14 MUST NOT BE USED.

A.G.S. 904.

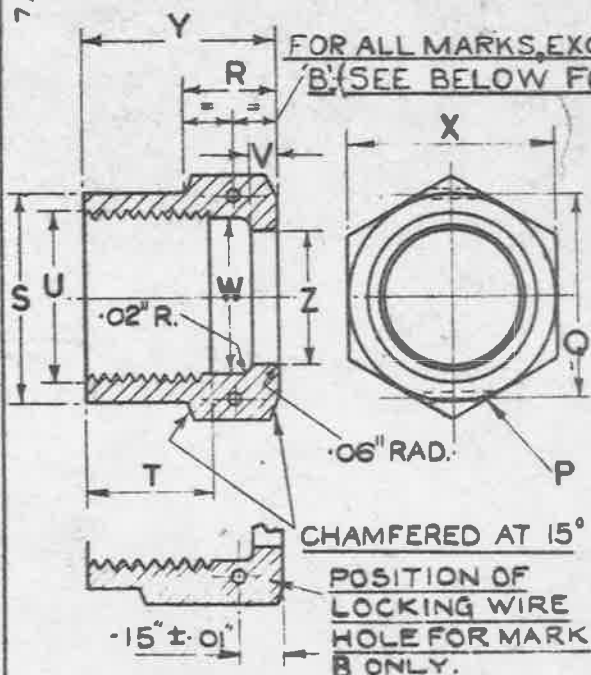
SEE A.G.S. 100 FOR GENERAL INFORMATION.

CORNER TO BE SQUARE

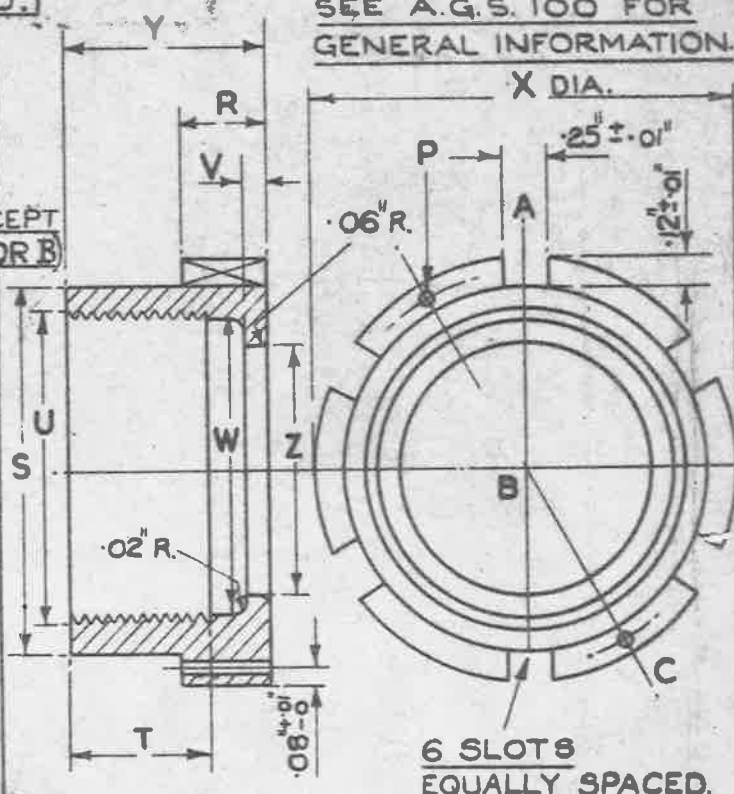


SCRAP VIEW FOR MARK 'A' ONLY

S. 2 48
7/STAND/2



MARKS A TO H



MARK	EXT. DIA. OF PIPE	Z	Y	X		W	V	U	T	S	R	Q	P	GAUGE No
				MAX.	MIN.									
A	3/16"	7/32"	.63"	.525"	.520"	.337"	.10"	8/16"	.370"	.50"	.25"	.48"	1/16"	
B	1/4"	9/32"	.75"	.600"	.595"	.451"	.11"	1/4"	.420"	.59"	.55"	.55"	1/16"	127 V
BB	5/16"	11/32"	.80"	.710"	.705"	.533"	.12"	19 T.P.I. WHIT. FORM 60°/DIA.	.460"	.70"	.30"	.67"	1/16"	
C	3/8"	13/32"	.85"	.820"	.815"	.589"	.12"	3/8"	.490"	.80"	.40"	.75"	1/16"	193 V
CC	7/16"	15/32"	.85"	.920"	.915"	.659"	.12"	14 T.P.I. WHIT. FORM 75°/DIA.	.510"	.90"	.40"	.92"	1/16"	
D	1/2"	17/32"	.87"	1.010"	1.002"	.734"	.12"	1/2"	.530"	.97"	.40"	.96"	1/16"	349 V
E	5/8"	21/32"	1.01"	1.100"	1.092"	.811"	.12"	5/8"	.670"	1.06"	.45"	1.06"	1/16"	351 V
F	3/4"	25/32"	1.06"	1.200"	1.192"	.950"	.12"	3/4"	.720"	1.19"	.45"	1.17"	1/16"	353 V
G	7/8"	29/32"	1.10"	1.390"	1.382"	1.098"	.12"	7/8"	.720"	1.37"	.45"	1.37"	.076" (No 48)	355 V
H	1"	1/32"	1.06"	1.670"	1.658"	1.193"	.12"	1"	.720"	1.55"	.45"	1.68"	.076" (No 48)	571 V
I														
J	1 1/4"	9/32"	1.06"	2.160"	2.140"	1.534"	.12"	1 1/4"	.720"	1.90"	.45"		.076" (No 48)	603 V

SPECIFICATION :- THE MATERIAL IS TO BE LIGHT ALLOY TO THE LATEST ISSUE OF SPEC. D.T.D. 423.
 SCREW THREADS TO B.S. SPEC. 84 (LATEST ISSUE) MEDIUM FIT.
 FOR DIAMETERS AND TOLERANCES OF MARKS BB & CC SEE A.G.S. 100 SHT. 5.
 FINISH :- TO BE ANODISED TO SPEC. D.T.D. 910 (LATEST ISSUE).

TITLE :- PIPE COUPLINGS (LIGHT ALLOY) OUTER SLEEVE

ISSUE	12	13	14 ²¹	15 ¹⁸	16	17	SM 18 ⁸⁷¹
ALT. No	MOD/AGS 699	MOD/AGS 724	AS/AGS 772	AS/AGS 787	AS/AGS 875	AS/AGS 988	MOD/AGS 994

MINISTRY OF SUPPLY
 APPLICATIONS FOR A.G.S. SHEETS TO:-
 A.T.P. 4A, THAMES HOUSE, MILLBANK, S.W.1.
 GENERAL INQUIRIES TO:-
 A.D.S.A.E. THAMES HOUSE, MILLBANK, S.W.1.

R.A.E. APPROVAL		A.D. S.A.E. APPROVAL	
SIGNATURE	DATE	SIGNATURE	DATE
<i>[Signature]</i>	10.3.48.	<i>[Signature]</i>	11.3.48.
SHEET No	1	A.G.S. No 904.	
No OF SHEETS	3		

Change Notice S.M.T. 1	Aircraft A.G.S. 904 part 1	Basic A/c.	Drawing No.	ISSUE 18								
RECORDS		ALLOCATION										
Date Received	22 MAY 1956	Source	Dest.									
Date Registered												
PLANNING												
		A'frame	Elect'l	Cost Estimated								
A.R. Issued				SPARES								
D.R. Issued				Spares Added								
Incorp. in B.O.M.				Spares Amended								
Incorp. in M.I.S.				Vocabulary								
Incorp. in Mod. Advice				PROCESS								
A.R. Amended				Treatments								
D.R. Amended	C.S. 23-5-52			Gauges								
Change Request				Equipment								
				Scheduled								
Dist'n	M.A. W.	ESS	NSW	SA	CDD	M/c S	S&S	S'y	BS	Insp.	AID	GS
Drwg.												
C. Notice												
Remarks		O.K. FILE ✓										

SEE A.G.S. 100 FOR
GENERAL INFORMATION

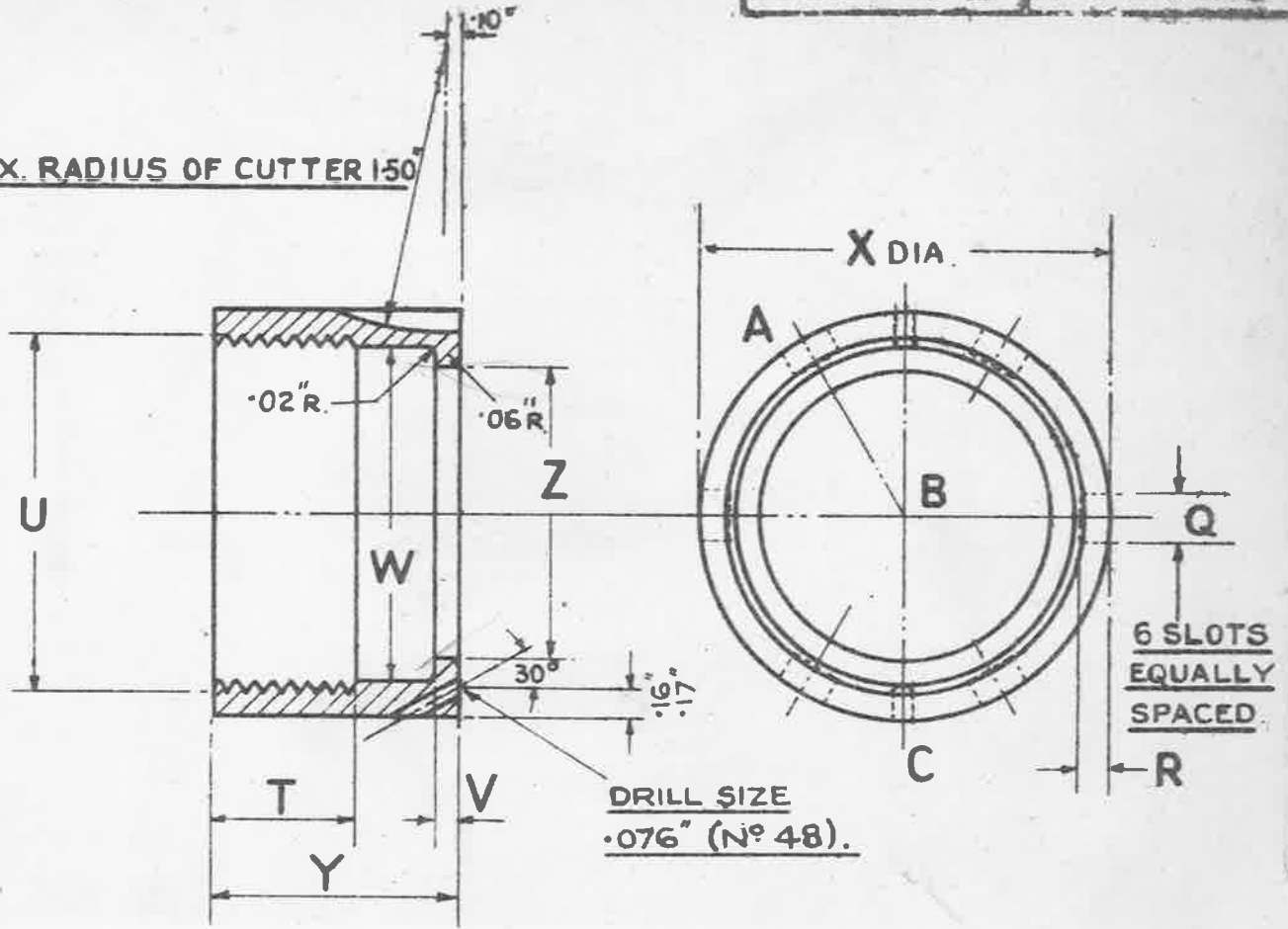
MINISTRY OF
SUPPLY

AGS. No 904

SHEET No 2 NO OF SHEETS 3

S/C 576808/39

MAX. RADIUS OF CUTTER 150



SECTION ON A.B.C.

MARK	EXTERNAL DIA. OF PIPE.	Z	Y	X		W	V	U	T	R	Q
		DIA. DRILL	+ .02" - 0	MAX.	MIN.	+ .01" - 0	+ .01" - 0	B.S.P. FULL THREAD		+ .01"	+ .01"
K	1 1/2"	1 17/32"	1.30"	2.16"	2.14"	1.766"	.12"	1 1/2"	.75"	.12"	.25"

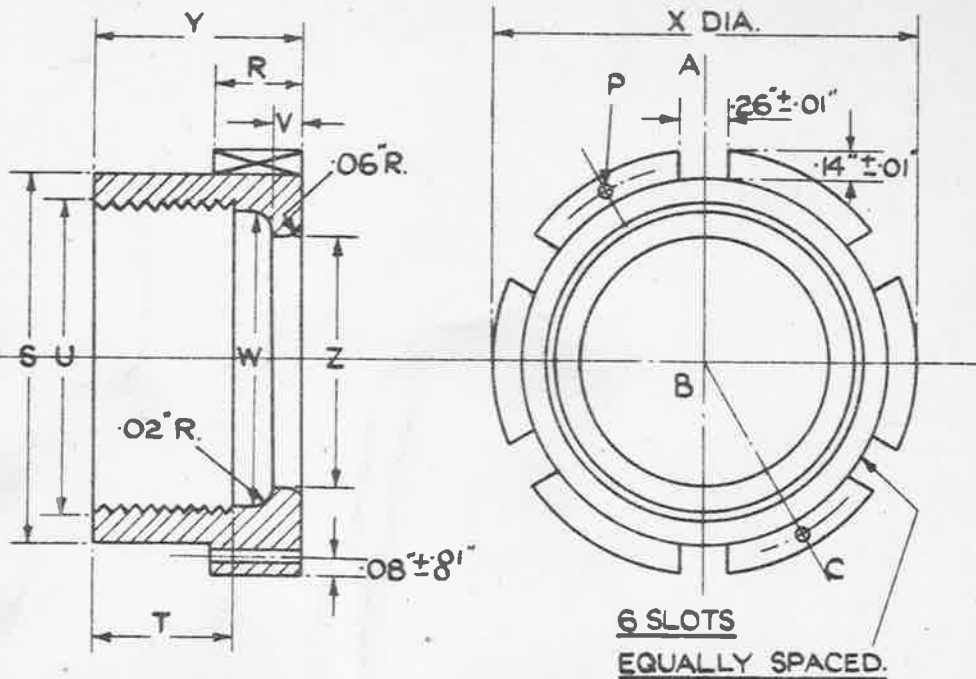
FOR SPECIFICATION AND PARTICULARS OF THREAD SEE AGS. 904 SHEET 1.

ISSUED BY ROYAL AIRCRAFT ESTABLISHMENT.	TITLE:- PIPE COUPLINGS. (LIGHT ALLOY) OUTER SLEEVE				DRAWN M.W. SHIPPEY.	RETRACED L.K.R. 25-1-39.
	ISSUE NO	6	7	7	CHECKED J.H.P. ASHER Reynolds	APPROVED G.W. 27-10-38
	ALTERATION NO	87519AB	SM856		RECH	

SEE A.G.S. 100 FOR
GENERAL INFORMATION.

A.G.S. 904

5.2.48
7/STANDS/2



SECTION ON A.B.C.

MARK	EXTN & DIA. OF PIPE	Z	Y	X	W	V	U	T	S	R	P	
		+ .01" - 0	+ .02" - 0	MAX. MIN.	+ .01" - 0	+ .01" - 0	B.S.P. THREAD	FULL THREAD ± .02"	± .01" DIA.	+ .02" - 0	DIA. DRILL	
L												
M	2"	2.03"	1.64"	2.96"	2.94"	2.231"	.21"	2"	1.00"	2.65"	.54"	.076" (Nº48)
N												
P	2 1/2"	2.53"	1.86"	3.60"	3.58"	2.844"	.25"	2 1/2"	1.15"	3.29"	.61"	.076" (Nº48)
Q												
R												

SPECIFICATION:- THE MATERIAL IS TO BE LIGHT ALLOY TO THE LATEST ISSUE OF SPEC: D.T.D. 423. THE SCREW THREADS ARE TO BE TO TABLE 19, (MEDIUM FIT.) OF B.S. SPEC: Nº 84 (LATEST ISSUE).

FINISH:- TO BE ANODISED TO SPEC: D.T.D. 910 (LATEST ISSUE).

TITLE:- PIPE COUPLING,
(LIGHT ALLOY) OUTER SLEEVE.

ISSUE	1	2	3	4	5	5
ALT. Nº	MOD. Nº	MOD. Nº	AGS/AS/AGS	AS/AGS	AS/AGS	AS/AGS
AGS/699	724	797	875	988	856	
R.A.E. APPROVAL			AD. S.A.E. APPROVAL			
SIGNATURE		DATE		SIGNATURE		DATE
<i>J. Moor</i>		5.1.48		<i>G. P. Humber</i>		28/2/48
SHEET Nº		3		A.G.S. Nº 904		
Nº OF SHEETS		3				

MINISTRY OF SUPPLY
APPLICATIONS FOR A.G.S. SHEETS TO:
R.T.P.4A. THAMES HOUSE, MILLBANK, S.W.1.
GENERAL INQUIRIES TO:-
A.D.S.A.E. THAMES HOUSE, MILLBANK, S.W.1.

AG.S. 904 SHEET. 2.

MARK	PIPE	P DRILL DIA.	Q	R	S	T		U		V	W	X	Y	Z
						FULL THREAD	D.S.P.F. THREAD							
A	3/16	1/16	.490"	.270"	.510"	.390"	.570"	1"	1/8	.110"	.347"	.525"	.650"	7 1/2"
B														
B B	5/16	1/16	.680"	.320"	.710"	.480"	.460"	19 T.P.I. 60° P.I. WHIT(B.S.M)	1/20	.545"	.710"	.820"	.800"	11"
C	3/8	1/16	.800"	.420"	.810"	.510"	.490"	3/8	.130"	.599"	.820"	.815"	.830"	13 1/2"
C C	7/16	1/16	.930"	.420"	.910"	.530"	.510"	14 T.P.I. 75° P.I. WHIT(B.S.M)	.130"	.669"	.920"	.870"	.850"	15 1/2"
D	1/2	1/16	.970"	.400"	.980"	.550"	.530"	1/2	.120"	.744"	1.010"	1.002"	.890"	17 1/2"
E	5/8	1/16	1.070"	.470"	1.070"	.690"	.670"	5/8	.130"	.821"	1.100"	1.030"	1.030"	21"
F	3/4	1/16	1.180"	.470"	1.200"	.740"	.720"	3/4	.120"	.960"	1.200"	1.192"	1.080"	25 1/2"
G	7/8	.076" (No 48)	1.380"	.470"	1.380"	.740"	.720"	7/8	.120"	1.108"	1.390"	1.382"	1.120"	29"
H	1"	.076" (No 48)	1.690"	.470"	1.560"	.740"	.720"	1"	.120"	1.205"	1.670"	1.658"	1.080"	1 1/2"
J	1 1/4	.076" (No 48)		.470"	1.910"	.740"	.720"	1 1/4	.120"	1.544"	2.160"	2.140"	1.080"	9"

AG.S. 904 MK. B IS CANCELLED REPLACED BY AG.S. 2111.

DESIGNED BY THE SOCIETY OF BRITISH LIGHTS & HEAT ENGINEERS LTD.,
28, KING STREET, ST. MARTIN'S, LONDON, E.C. 4.

DESIGNED BY: DAWIN TUNCO CHECKED BY: J.M. FOR

DATE: 19/4/57

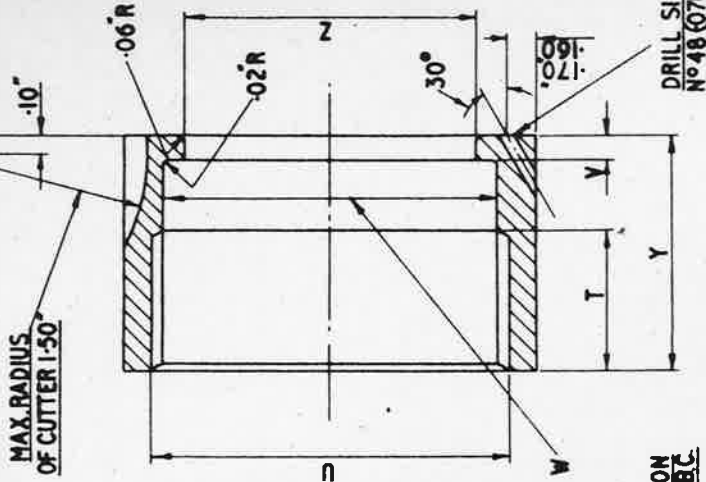
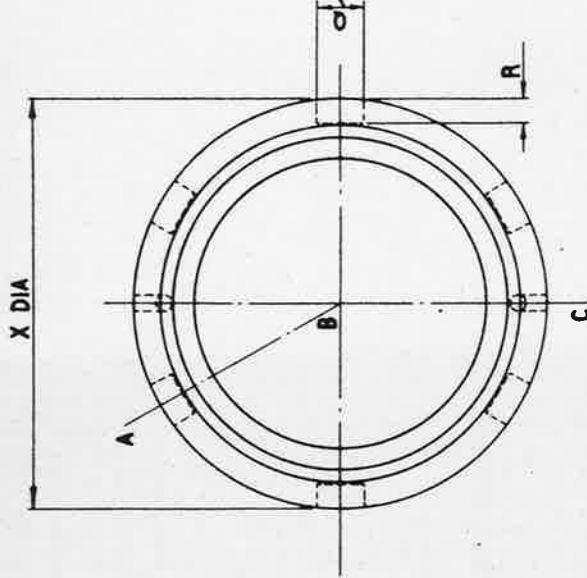
SCALE: LIGHTS NOT SHOWN

AG.S. 904 SHEET. 2.

AGS. 904 - SHEET 3.

7 P.2.
8 P.22

SM 1092.



SECTION ON ABC

MARK	O/D OF PIPE	Q	R	T	U	V	W	X	Y	Z	DRILL DIA.
K	1 1/2	-260°	-130°	.770°	1 1/2	.130°	1.776°	2.160°	1.320°	17°	
		-240°	-110°	.750°	1 1/2	.120°	1.766°	2.140°	1.300°	15°	

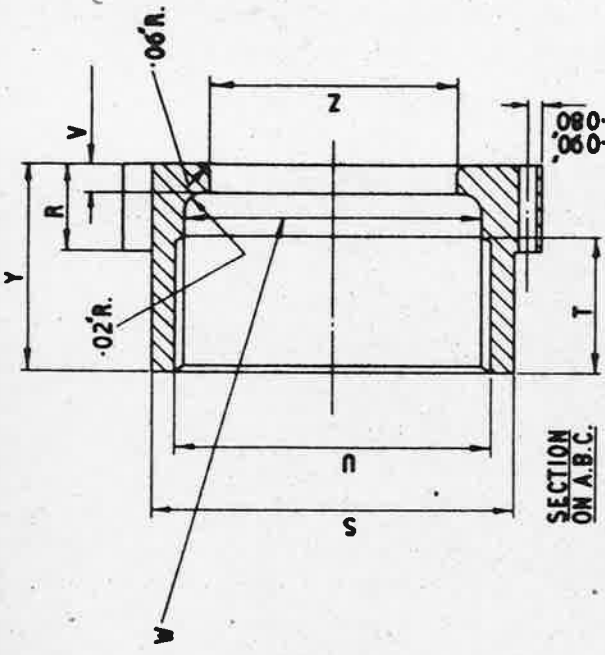
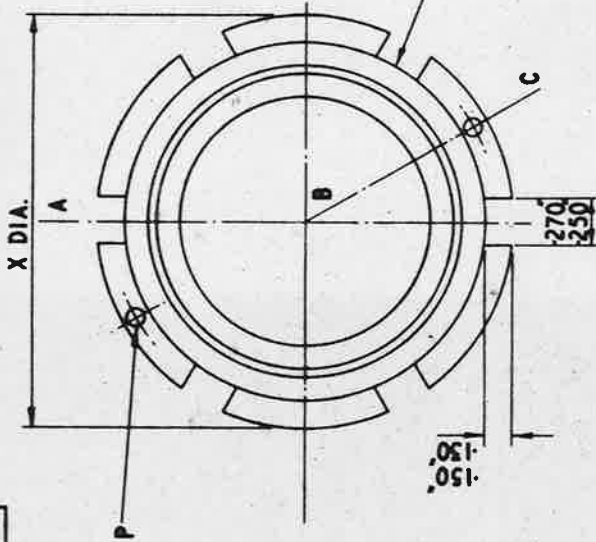
SEE AGS. 100 FOR GENERAL INFORMATION
BSP.F. THREADS TO BS.SPEC. 2779 MEDIUM FIT.

DESIGNED	DRAWN	TRACED	CHECKED	APPROVED FOR	DATE
				HT	27/1/52
ISSUED BY THE SOCIETY OF BRITISH AIRCRAFT MANUFACTURERS LTD., 10, KING STREET, ST. JAMES'S, LONDON, S.W.1.					
MATERIAL—REMARKS			THIRD ANGLE PROJECTION		
ALUMINIUM ALLOY			AGS. 904 SHEET 3		
DRAWING OR PART No.			PIPE COUPLINGS (ALUMI ALLOY) OUTER SLEEVE		
R. S. 116 NO PAINT			LIMITS NOT SHOWN		
SCALE			+ .010°		
REP			UNIT QTY		
D.T.D. 423			MATERIAL—REMARKS		

SIZE: 11" x 17"

A.G.S. 904 - SHEET 4.

SM 1092.



MARK	EXTN. DIA. OF PIPE	P DRILL DIA.	R	S	T	U		V	W	X	Y	Z
						FULL THREAD	B.S.P.F. THREAD					
L												
M	2"	No 48 (.076")	.560" .540"	2.660" 2.640"	1.020" 1.000"	2"		.220" .210"	2.241" 2.231"	2.960" 2.940"	1.660" 1.640"	2.040" 2.020"
N												
P	2 1/2"	No 48 (.076")	.630" .610"	3.300" 3.280"	1.170" 1.150"	2 1/2"		.260" .250"	2.854" 2.844"	3.600" 3.580"	1.880" 1.860"	2.540" 2.520"

SEE A.G.S. 100 FOR GENERAL INFORMATION.
B.S.P.F. THREADS TO B.S. SPEC. NO 2779 MEDIUM FIT.

DRAWING OR PART No. _____
 REF. _____
 R. S. 116 NO PAINT
 SCALE _____
 ALUMINUM ALLOY
 DESCRIPTION _____
 D.T.D. 423
 MATERIAL - REMARKS _____
 LIMITS NOT SHOWN
 THIRD ANGLE PROJECTION
 PIPE COUPLINGS (ALUMINUM ALLOY) OUTER SLEEVE
 A.G.S. 904 - SHEET 4.

DESIGNED BY _____
 DRAWN BY _____
 CHECKED BY _____
 DATE _____
 APPROVED BY _____
 DATE _____
 HT _____
 PT _____
 ISSUED ON _____

ISSUED BY THE SOCIETY OF BRITISH AIRCRAFT SUPPLIERS LTD.,
15, MARK STREET, ST. JAMES, LONDON, E.C.1.