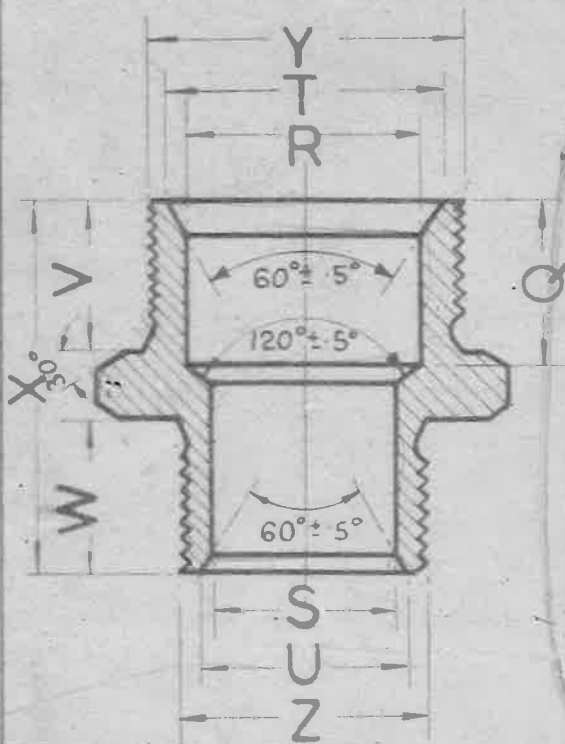
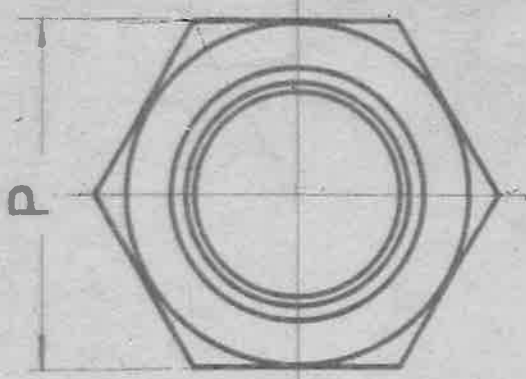


OR D.T.D. 423 (LATEST ISSUE)  
 MATERIAL - LIGHT ALLOY TO B.S. SPEC. L.I. (LATEST ISSUE)  
 SCREW THREADS TO BE OF WHITWORTH FORMATION AND  
 WITHIN THE LIMITS OF GRADE AND PLAY AS SPECIFIED  
 FOR STANDARD FITS FOR SIMILAR PITCH OF THREAD  
 IN B.S. SPECIFICATION No 84.  
 FINISH - TO BE ANODISED TO SPECIFICATION D.T.D. 910.



**OBSOLETE.**  
 SUPERSEDED BY AGS 1109 (LIGHT ALLOY).

MARK	Z	Y	X	W	V	U	T	S	R	Q	P	N	M	L	K	G	F
A	B.S. PIPE 1 1/8	1 1/4	1 1/2	45	45	295	41	3 1/16	9 3/32	47	710	705	03	05	04	07	52
B	1 1/4	3 3/8	1 1/2	45	50	41	55	9 3/32	13 3/32	51	820	815	04	07	04	07	66
BB	1 1/4	19 IPI 60 O.D.	1 1/2	45	52	41	48	9 3/32	23 64	54	820	815	04	07	04	07	60
C	3 3/8	1 1/2	1 3/5	50	60	55	69	13 3/32	17	63	1 010	1 002	04	07	06	10	83
CC	3 3/8	14 TPI 75 O.D.	1 3/5	50	55	55	60	13 3/32	15 3/32	58	920	915	04	07	06	10	75
D	1 1/2	5 3/8	1 5/8	60	70	69	76	17 3/32	5 3/8	76	1 100	1 092	06	10	06	10	90
E	5 3/8	3 3/4	1 7/8	70	75	76	90	5 3/8	3 3/4	83	1 200	1 192	06	10	06	10	1 04
F	3 3/4	7 3/8	1 9	75	80	90	1 04	7 3/8	7 3/8	90	1 390	1 382	06	10	06	10	1 19
G	7 3/8	1	1 95	80	80	1 04	1 13	7 3/8	31 3/32	90	1 480	1 468	06	10	08	13	1 31
H	1 1/4	1 1/4	1 95	80	80	1 13	1 47	31 3/32	1 1/4	84	1 860	1 845	08	13	08	13	65

ISSUED BY DRAWING OFFICE DIRECTORATE OF TECHNICAL DEVELOPMENT AIR MINISTRY.

TITLE :- REDUCING UNION NUT (LIGHT ALLOY)

DRAWN J.W. BRASHER TRACED J. HANNAN

CHECKED APPROVED

ALTERATION No AGS/341 AS No 209 AGS/234 AMEND AGS/497 MOD No AS No 363