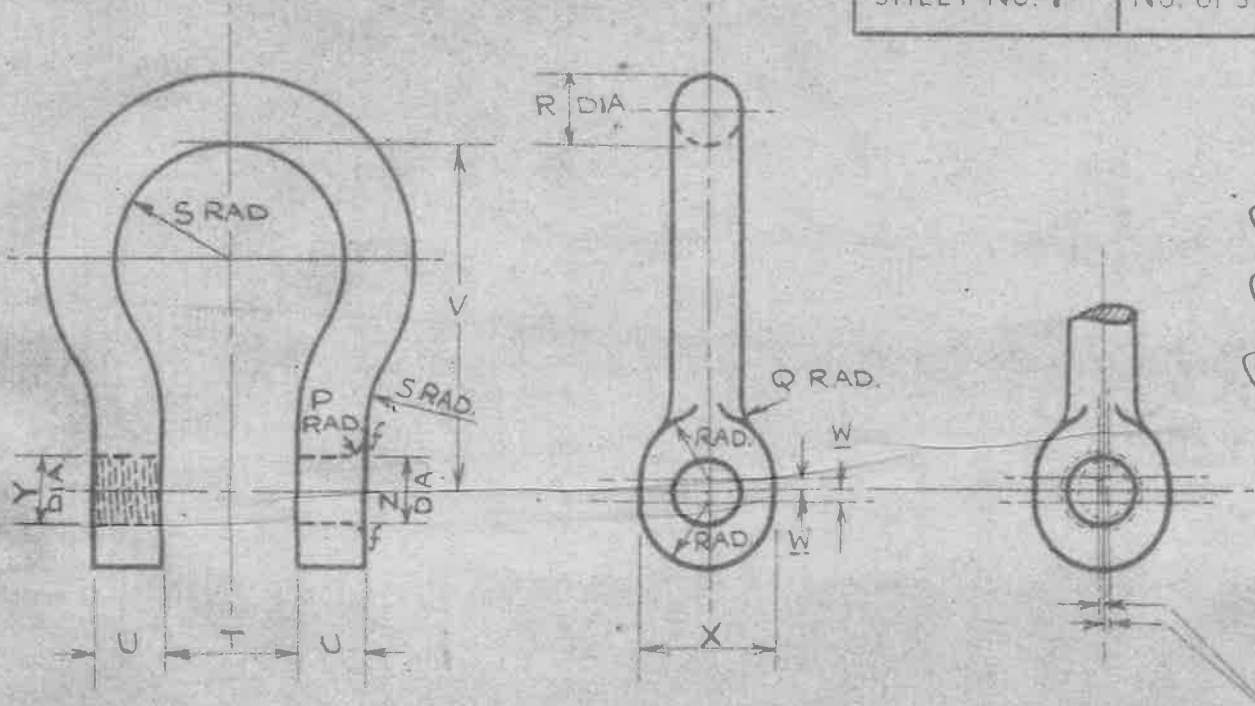


6/10/36
39/172/36



CSC

TO BE MACHINED WHERE MARKED f

HOLE MUST NOT BE MORE THAN 0.02" OFF THE CENTRE LINE OF THE SHACKLE

MARK	NOMINAL SIZE OF SHACKLE	Z +0.00 -0.015	Y	X +0.03	W +0.02	V +0.06	U +0.03	T +0.03	S +0.03	R +0.03	Q +0.03	P +0.01	PROOF LOAD	W/CHAIN PROVEN SUITABLE
C	3/8 IN	3/8 IN	3" BBSF	.72	.06	1.80	.36	.72	.60	.36	.36	.12	2100 LB	1/4 IN
D	7/16	7/16	7/16 BBSF	.84	.07	2.10	.42	.84	.70	.42	.42	.14	2860	5/16
E	1/2	1/2	1/2 BBSF	.96	.08	2.40	.48	1.00	.80	.48	.48	.16	3730	3/8
F	5/8	5/8	5/8 BBSF	1.20	.10	3.00	.60	1.20	1.00	.60	.60	.20	5830	7/16
G	3/4	3/4	3/4 BBSF	1.44	.12	3.60	.72	1.50	1.20	.72	.72	.24	8400	1/2

SPECIFICATION:-

THE MATERIAL TO BE TO B.S. SPEC N S.6.-C (LATEST ISSUE)

SCREW THREADS - BRITISH STANDARD FINE (BSF) TO B.S. SPEC N 84

TO BE ZINC OR CADMIUM COATED BY AN APPROVED PROCESS.

COATING TO BE NOT LESS THAN .0003" THICK

THE PROOF LOAD IS TO BE APPLIED TO A BOW & PIN ASSEMBLED AS A COMPLETE SHACKLE AND IS TO RESULT IN NO APPRECIABLE DISTORTION OF EITHER PART. THE PIN IS TO SCREW IN AND OUT OF THE BOW FREELY BEFORE PROOF LOADING. AFTER PROOF LOADING, IT MUST BE POSSIBLE TO SCREW THE PIN IN AND OUT BY HAND USING A BAR NOT LONGER THAN 6" A PIN OF THE TYPE SHOWN IN A.G.S. 916 TO BE USED WHEN PROOF LOADING.

ROUTINE TESTING NOT LESS THAN 5% OF THE FORGINGS IN EACH BATCH ARE TO BE PROOF-LOADED. A BATCH COMPRISES FORGINGS FROM THE SAME CAST & HEAT TREATED TOGETHER

ISSUED BY DRAWING OFFICE DIRECTORATE OF TECHNICAL DEVELOPMENT AIR MINISTRY

TITLE - BOW (HARP SHAPE) FOR CHAIN SHACKLE

RETRACTED FOR A.P.C. A.E.R. 23741

DRAWN BY [Signature]

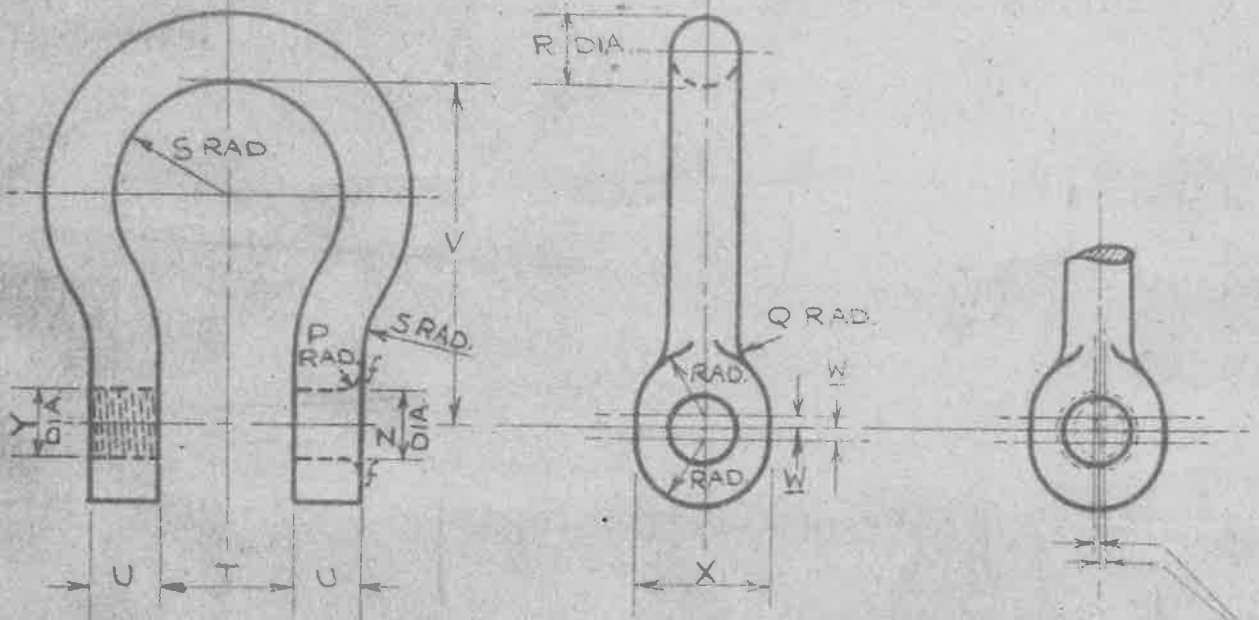
TRACED IN GALE 3.6.36

ISSUE No.	1	2	3	4
ALTERATION	A63 302	A63 128	A63 138	A63 367

CHECKED BY [Signature]

APPROVED BY [Signature]

6.10.36
391372/36



TO BE MACHINED WHERE MARKED f

HOLE MUST NOT BE MORE THAN 0.02" OFF THE CENTRE LINE OF THE SHACKLE

MARK	NOMINAL SIZE OF SHACKLE	Z $+0.05$ $+0.02$	Y	X -0.03	W -0.01 $+0.02$	V -0.06	U -0.03	T $+0.03$	S -0.03	R $+0.03$	Q -0.03	P $+0.01$	PROOF LOAD	W/CHAIN FORWARD SUITABLE
C	3/8 IN	3/8 IN	3/8 B.S.F.	.72	.06	1.80	36	.72	.60	36	36	12	2100 LB	1/4 IN
D	7/16	7/16	7/16 B.S.F.	.84	.07	2.10	42	84	70	42	42	14	2860	5/16
E	1/2	1/2	1/2 B.S.F.	.96	.08	2.40	48	1.00	.80	48	48	16	3730	3/8
F	5/8	5/8	5/8 B.S.F.	1.20	.10	3.00	60	1.20	1.00	60	60	20	5830	7/16
G	3/4	3/4	3/4 B.S.F.	1.44	.12	3.60	72	1.50	1.20	72	72	24	8400	1/2

SPECIFICATION :-

THE MATERIAL TO BE TO B.S. SPEC N S.6-C (LATEST ISSUE)

SCREW THREADS :- BRITISH STANDARD FINE (B.S.F.) TO B.S. SPEC N°84

-1340 MEDIUM FIT

FINISH :- TO BE CADMIUM PLATED TO SPEC : D.T.D 904 (LATEST ISSUE)

THE PROOF LOAD IS TO BE APPLIED TO A BOW & PIN ASSEMBLED AS A COMPLETE SHACKLE AND IS TO RESULT IN NO APPRECIABLE DISTORTION OF EITHER PART. THE PIN IS TO SCREW IN AND OUT OF THE BOW FREELY BEFORE PROOF LOADING. AFTER PROOF LOADING, IT MUST BE POSSIBLE TO SCREW THE PIN IN AND OUT BY HAND USING A BAR NOT LONGER THAN 6" A PIN OF THE TYPE SHOWN IN A.G.S. 916 TO BE USED WHEN PROOF LOADING.

ROUTINE TESTING NOT LESS THAN 5% OF THE FORGINGS IN EACH BATCH ARE TO BE PROOF-LOADED. (A BATCH COMPRISES FORGINGS FROM THE SAME CAST & HEAT TREATED TOGETHER)

ISSUED BY DRAWING OFFICE DIRECTORATE OF TECHNICAL DEVELOPMENT AIR MINISTRY	TITLE—BOW (HARP SHAPE) FOR CHAIN SHACKLE					RETRACTED FOR A.G.S. A.E.R. 23.7.4	DRAWN BY <i>[Signature]</i>	TRACED BY <i>[Signature]</i>
	ISSUE No.	1	2	3	4	5	CHECKED <i>[Signature]</i>	APPROVED <i>[Signature]</i>
ALTERATION	AGS 302	AGS 128	AGS 100	AGS 105	AGS 105			