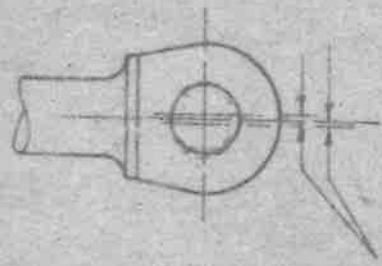
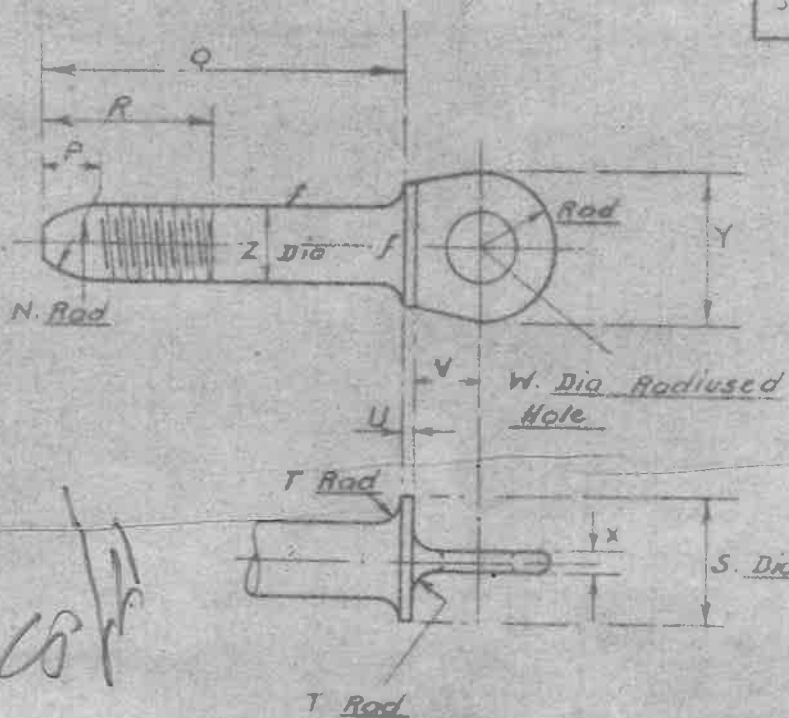


61030
1913/1/10



Hole must not be more than 0.02 off the centre line of the pin.

Pin to be machined where marked f.

| Mark | Nominal Size of Pin | Z Dia of Pin | Tolerance on Pin Dia | Y | X | W | V | U | T | S | R | Q | P | N | Proof Load | W.I. Char for vitric Suitability |
|------|---------------------|--------------|----------------------|-------|------|-------|------|------|------|-------|-------|-------|------|------|------------|----------------------------------|
| C | 3/8" | 3/8 B.S.F. | +0" -0.0035" | .78" | .12" | 3/8" | .36" | .06" | .12" | .66" | .90" | 1.92" | .30" | .48" | 2100 lbs | 1/4" |
| D | 7/16" | 7/16 B.S.F. | +0" -0.004" | .91" | .14" | 7/16" | .42" | .07" | .14" | .77" | 1.05" | 2.24" | .35" | .56" | 2850 | 5/16" |
| E | 1/2" | 1/2 B.S.F. | +0" -0.004" | 1.04" | .16" | 1/2" | .48" | .08" | .16" | .88" | 1.20" | 2.60" | .40" | .64" | 3730 | 3/8" |
| F | 5/8" | 5/8 B.S.F. | +0" -0.006" | 1.30" | .20" | 5/8" | .60" | .10" | .20" | 1.10" | 1.50" | 3.20" | .50" | .80" | 5830 | 7/16" |
| G | 3/4" | 3/4 B.S.F. | +0" -0.006" | 1.56" | .24" | 3/4" | .72" | .12" | .24" | 1.32" | 1.80" | 3.90" | .60" | .96" | 8400 | 1/2" |

Specification:-

The material to be to B.S. Specification S. 6 C. (Latest Issue).

Screw Threads - British Standard Fine (B.S.F.) to B.S. Spec No 84.

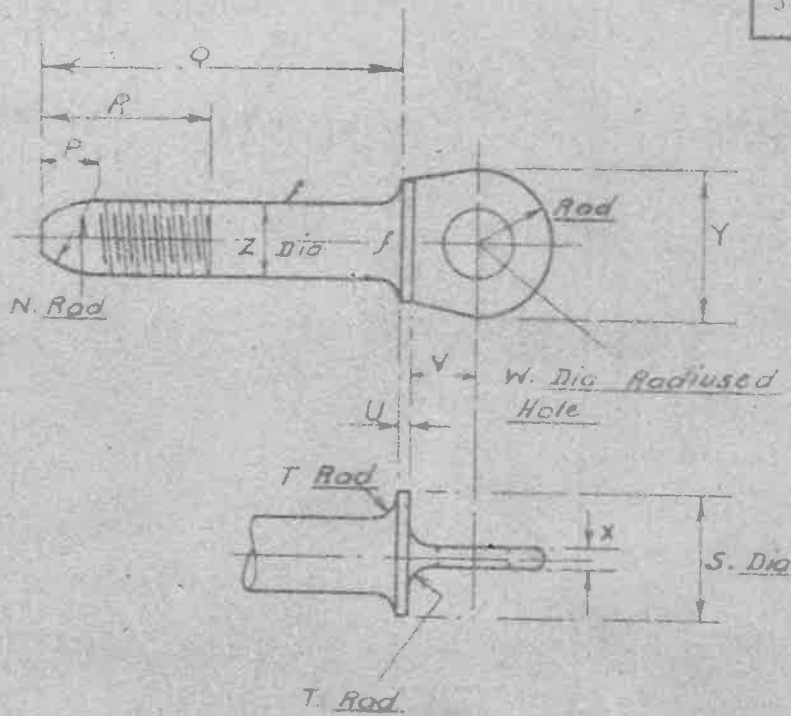
To be zinc or cadmium coated by an approved process.

Coating to be not less than .0003" thick.

The proof load is to be applied to pin, assembled with a bar of the type shown on A.G.S. 912 or 914, to form a complete shackle, and is to result in no appreciable distortion of either part. The pin is to screw firmly in and out of the bar freely before proof loading. After proof loading it must be possible to screw the pin in and out by hand using a bar not longer than 6"

ROUTINE TESTING NEED NOT BE DONE, APART FROM THE TESTS CALLED FOR ON AGS 912 & 914.

| | | | | | | | |
|--|--------------------------------------|---|---|---|----------------------|--------------------------------|------------------|
| ISSUED BY DRAWING OFFICE DIRECTORATE OF TECHNICAL DEVELOPMENT AIR MINISTRY | TITLE - <u>PIN FOR CHAIN SHACKLE</u> | | | | RETRACTED FOR A.G.S. | DRAWN | TRACED |
| | ISSUE No. | X | 2 | 3 | 4 | S. H. T. 25-1-4 T.G. Griffiths | J. Neale 31-12-4 |
| | | | | | | CHECKED | APPROVED |



Hole must not be more than 0.02 off the centre line of the pin.

Pin to be machined where marked f.

| Mark | Nominal Size of Pin | Z Dia of Pin | Tolerance on Pin Dia | Y | X | W | V | U | T | S | R | Q | P | N | Proof Load | W.I. Chain for which Suitable |
|------|---------------------|--------------|----------------------|----------------|----------------|----------------|----------------|----------------|-------------|----------------|----------------|----------------|----------------|----------------|------------|-------------------------------|
| | | | | -0.03 +0.03 | -0.03 +0.03 | -0.03 +0.03 | -0.03 +0.03 | -0.03 +0.03 | -0.01 +0 | -0.03 +0.03 | -0.03 +0.12 | -0.03 +0.06 | -0.03 +0.03 | -0.03 +0.03 | | |
| C | 3/8" | 3/8 B.S.F. | +0.00035" | .78" | .12" | 3/16" | .36" | .06" | .12" | .66" | .90" | 1.92" | .30" | .48" | 2100 lbs | 1/4" |
| D | 7/16" | 7/16 B.S.F. | +0.0004" | .91" | .14" | 1/8" | .42" | .07" | .14" | .77" | 1.05" | 2.24" | .35" | .56" | 2860 lbs | 5/16" |
| E | 1/2" | 1/2 B.S.F. | +0.0004" | 1.04" | .16" | 1/2" | .48" | .08" | .16" | .88" | 1.20" | 2.60" | .40" | .64" | 3730 lbs | 3/8" |
| F | 5/8" | 5/8 B.S.F. | +0.0006" | 1.30" | .20" | 5/16" | .60" | .10" | .20" | 1.10" | 1.50" | 3.20" | .50" | .80" | 5830 lbs | 7/16" |
| G | 3/4" | 3/4 B.S.F. | +0.0006" | 1.56" | .24" | 3/4" | .72" | .12" | .24" | 1.32" | 1.80" | 3.90" | .60" | .96" | 8400 lbs | 1/2" |

Specification:-

The material to be to B.S. Specification S. 6. C. (Latest Issue)

Screw Threads:- British Standard Fine (B.S.F.) to B.S. Spec No. 84, -1940, medium fit

Finish:- To be cadmium plated to Spec: D.T.D. 904 (Latest Issue.)

The proof load is to be applied to pin assembled with a bow of the type shown on A.G.S. 912 or 914, to form a complete shackle, and is to result in no appreciable distortion of either part. The pin is to screw firmly in and out of the bow freely before proof loading. After proof loading it must be possible to screw the pin in and out by hand, using a bar not longer than 6".

ROUTINE TESTING NEED NOT BE DONE, APART FROM THE TESTS CALLED FOR ON AGS 912 & 914.

| | | | | |
|--|------------------------------------|----------------------|----------------------|--------------------------|
| ISSUED BY DRAWING OFFICE DIRECTORATE TECHNICAL DEVELOPMENT | TITLE <u>PIN FOR CHAIN SHACKLE</u> | RETRACTED FOR A.T.C. | DRAWN T.G. Griffiths | TRACED J. Neale 31-12-36 |
| ISSUE No. | X | 3 | 4 | 5 |
| | | | | |
| | | | CHECKED | APPROVED |