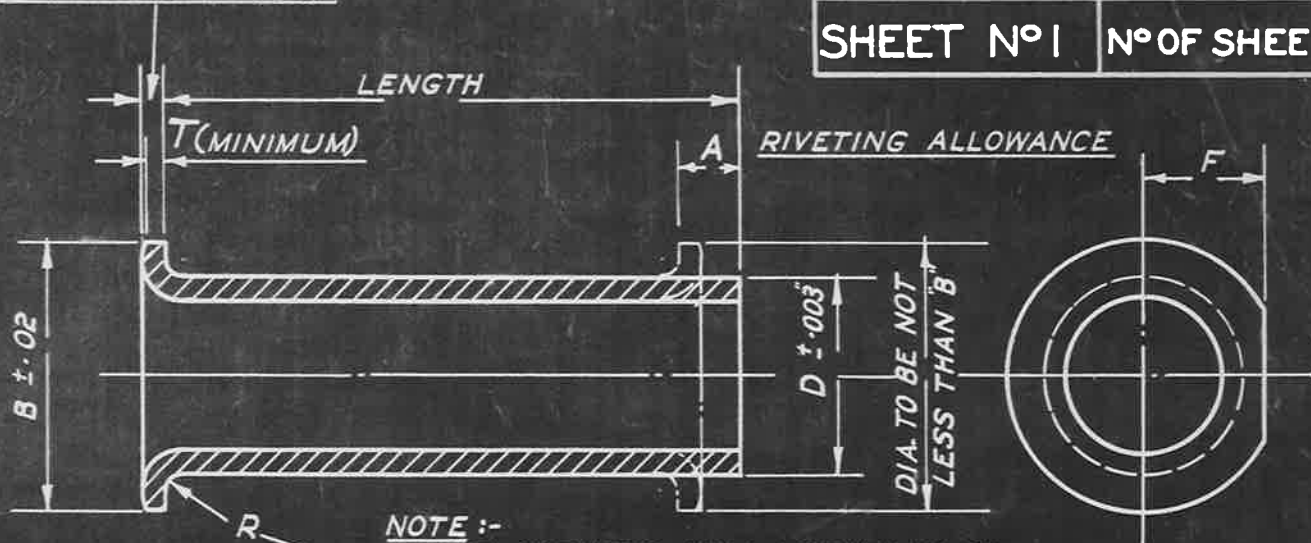


SUPERSEDED BY A.G.S. 501 FOR ALL FUTURE DESIGNS.

THICKNESS OF TUBE

AIR MINISTRY AGS N°936

SHEET N°1 N° OF SHEETS 1



NOTE :-  
 THESE CORNERS WILL NORMALLY BE MADE SQUARE, AND WILL ONLY BE ROUNDED TO RADIUS R IF SPECIALLY ORDERED.

8-11-35  
455557/35

DIA. OF TUBE D	GAUGE S.W.G.	B	R	T	A	F	LENGTHS																																																
							.5"	.75"	1.0"	1.25"	1.5"	2.0"	2.5"	3.0"	3.5"	4.0"	4.5"	5.0"	5.5"	PART NUMBERS																																			
							1	2	3	4	5	6	7																																										
.8"	22	.2"	.02"	.021"	.09"	.082"																																																	
.13"	20	.3"	.03"	.027"	.11"	.124"	14	15	16	17	18	19	20	21																																									
.1"	17	.39"	.04"	.042"	.14"	.165"	27	28	29	30	31	32	33	34																																									
.14"	17	.47"	.04"	.042"	.15"	.196"			41	42	43	44	45	46	47	48																																							
.16"	17	.55"	.04"	.042"	.16"	.227"				54	55	56	57	58	59	60	61	62																																					
.21"	17	.70"	.04"	.042"	.16"	.29"				68	69	70	71	72	73	74	75	76	77																																				
	14	.75"	.06"	.06"	.22"	.31"				81	82	83	84	85	86	87	88	89	90																																				
.25"	17	.86"	.04"	.042"	.17"	.353"					95	96	97	98	99	100	101	102	103	104																																			
	14	.90"	.06"	.06"	.23"	.373"					108	109	110	111	112	113	114	115	116	117																																			

NOTE :-

INTERMEDIATE LENGTHS TO BE FORMED BY CUTTING THE RIVET FROM THE NEXT LONGER SIZE.

SPECIFICATION :-

THE MATERIAL TO BE 45% NICKEL ALLOY TUBE TO D.T.D. SPECIFICATION N° 268. (LATEST ISSUE)

ISSUED BY DRAWING OFFICE DIRECTORATE OF TECHNICAL DEVELOPMENT AIR MINISTRY	TITLE <b>TUBULAR RIVETS</b> (45% NICKEL ALLOY)				DRAWN J. MILLS	RE-TRACED BD. 23.1.39	
	ISSUE N°	12 30	1 39	2 39	3	4	CHECKED G. ANDERSON RE-CHECKED R.B. BASTABLE
ALTERATION N°	AGS 310	MOD. N° AGS/372	AS AGS JB	MOD. N° AGS/307			