

OBSOLESCE

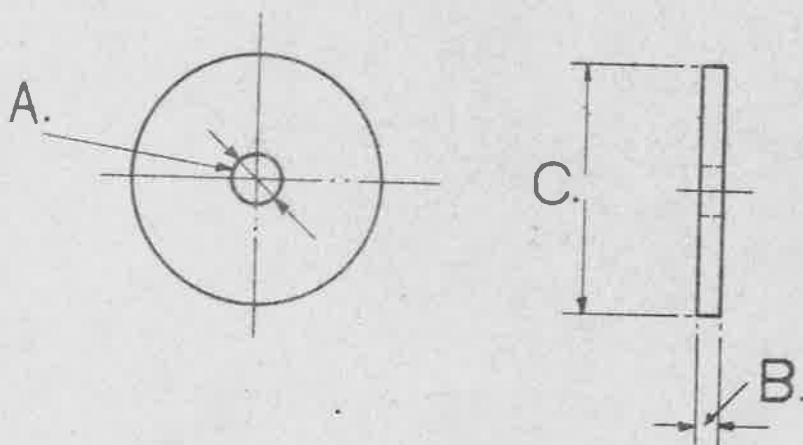
SUPERSEDED BY WASHERS
SELECTED FROM RANGE OF
BRITISH STANDARD WASHERS
S.P. 10 TO S.P. 19.

MINISTRY
OF SUPPLY.

AGS.No. 947.

SHEET No. 1

No. OF SHEETS 1



MARK	A ^{-0.02} / _{+0.02} "	B ^{-0.01} / _{+0.01} "	C ^{±0.05} "
A	.12"	.06"	1.0"
B	.15"	.06"	1.0"
C	.19"	.06"	1.25"
D	.26"	.06"	1.25"
E	.32"	.06"	1.25"
F	.38"	.08"	1.5"
G	.44"	.08"	1.5"
H	.51"	.08"	1.5"

SPECIFICATION:- MATERIAL:- STEEL, NON-CORRODIBLE TO SPEC.S.80
OR D.T.D. SPEC. 146, 166 OR 171 (LATEST ISSUES).

ISSUED BY ROYAL AIRCRAFT ESTABLISHMENT.	TITLE:- SPECIAL BRIGHT WASHERS, (STEEL, NON-CORRODIBLE.)				DRAWN C.T.Reynolds	TRACED MH. 15-4-41.
	ISSUE No	27	3	4	CHECKED J.H. Moore	APPROVED J.H. Moore 27-4-41
ALTER ⁿ No	MOD. No	AS. No	AS/AGS			
	AGS 412	AGS 248	794			