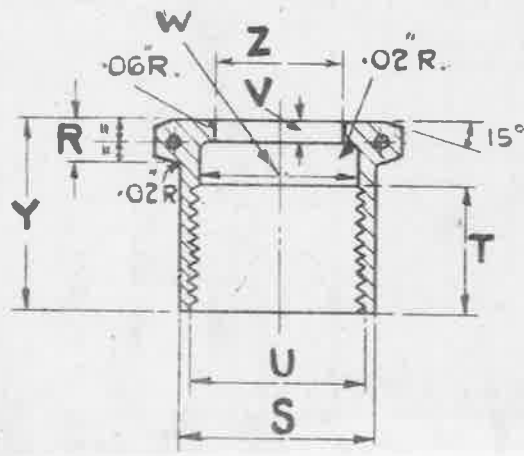
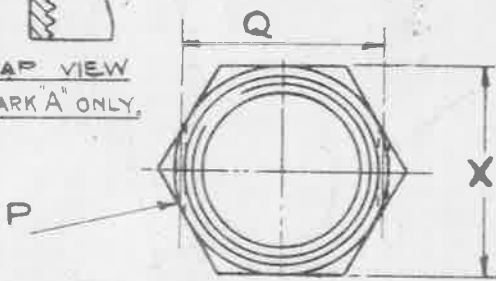


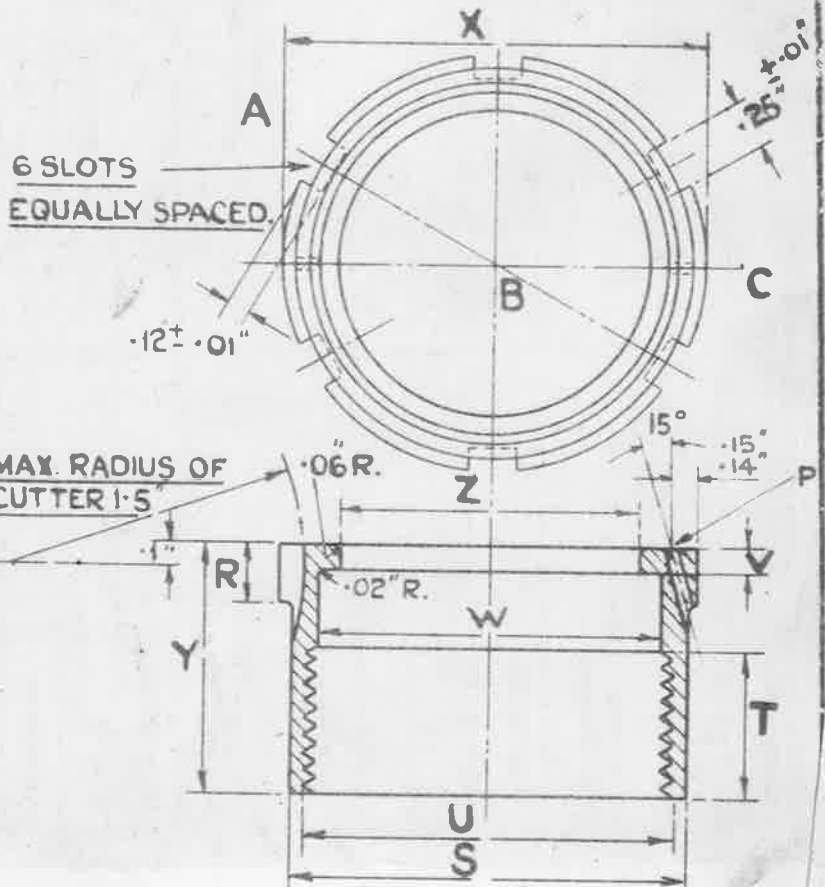
SCRAP VIEW FOR MARK A ONLY.



MARK A TO H.

6 SLOTS EQUALLY SPACED.

MAX RADIUS OF CUTTER 1.5



MARK J & K - SECTION ON A.B.C.

MARK.	EXT. DIA. OF PIPE.	Z	Y	X	W	V	U	T	S	R	Q	P	GAUGE No	
		DIA. DRILL	+ .02 - 0	MAX: MIN:	+ .01 - 0	+ .01 - 0	THREAD	+ .02 - 0	DIA. + .01 - 0	+ .02 - 0	+ .01 - 0	DIA DRILL		
A	3/16"	7/32"	.63"	.525"	.520"	.337"	.10"	1/8 B.S.P.	.37"	.47"	.18"	.48"	1/16"	
B	1/4"	9/32"	.75"	.600"	.595"	.451"	.11"	1/4 B.S.P.	.42"	.58"	.19"	.55"	1/16"	127V
BB	5/16"	11/32"	.80"	.710"	.705"	.533"	.12"	19 T.P.I. 60° O/D	.46"	.67"	.20"	.67"	1/16"	
C	3/8"	13/32"	.83"	.820"	.815"	.589"	.12"	3/8 B.S.P.	.49"	.73"	.20"	.79"	1/16"	193V
CC	7/16"	15/32"	.85"	.920"	.915"	.659"	.12"	14 T.P.I. 75° O/D	.51"	.83"	.21"	.92"	1/16"	
D	1/2"	17/32"	.87"	1.010"	1.002"	.734"	.12"	1/2 B.S.P.	.53"	.91"	.21"	.96"	1/16"	349V
E	5/8"	21/32"	1.01"	1.100"	1.092"	.811"	.12"	5/8 B.S.P.	.67"	.99"	.22"	1.06"	1/16"	351V
F	3/4"	25/32"	1.06"	1.200"	1.192"	.950"	.12"	3/4 B.S.P.	.72"	1.14"	.22"	1.17"	1/16"	353V
G	7/8"	29/32"	1.10"	1.300"	1.292"	1.098"	.12"	7/8 B.S.P.	.72"	1.28"	.23"	1.26"	.076" (N°48)	355V
H	1"	1 1/32"	1.06"	1.480"	1.468"	1.193"	.12"	1" B.S.P.	.72"	1.42"	.23"	1.47"	.076" (N°48)	571V
J	1 1/4"	1 9/32"	1.11"	1.97"	1.95"	1.534"	.12"	1 1/4 B.S.P.	.72"	1.77"	.25"		.076" (N°48)	603V
K	1 1/2"	1 17/32"	1.3"	2.16"	2.14"	1.766"	.12"	1 1/2 B.S.P.	.75"	2.02"	.30"		.076" (N°48)	

MATERIAL:- STEEL TO BS. SPEC. N S.I. (LATEST ISSUE).

SCREW THREADS TO BE IN ACCORDANCE WITH B.S. SPEC: 84-1940. FOR B.S.P. MEDIUM FIT.

FINISH:- TO BE CADMIUM PLATED TO SPEC: D.T.D. 904 (LATEST ISSUE).

ISSUED BY ROYAL AIRCRAFT ESTABLISHMENT

TITLE:- METAL COUPLINGS (STEEL) OUTER SLEEVE.

DRAWN J.H. BRASHER

RETRACED DW. 16.1.39

ISSUE No 9 10 11 12 13

CHECKED M.W. SHIPPEY RE. CHECKED

APPROVED G.R.W. 2.10.36

SEE A.G.S. 100 FOR
GENERAL INFORMATION.

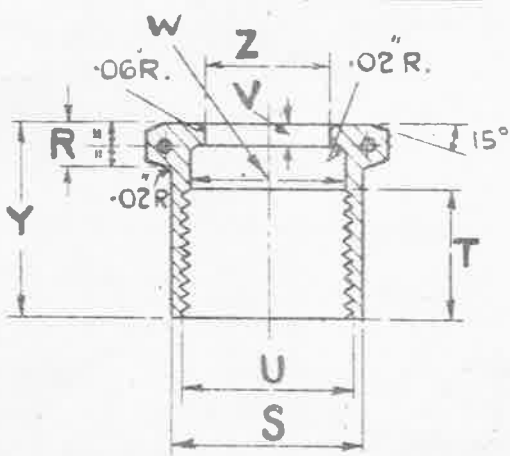
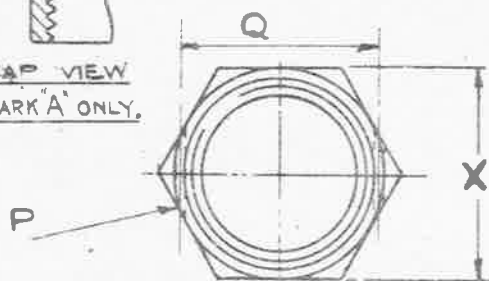
MINISTRY OF
SUPPLY

AGS.No.954

SHEET No 1 No OF SHEETS 1



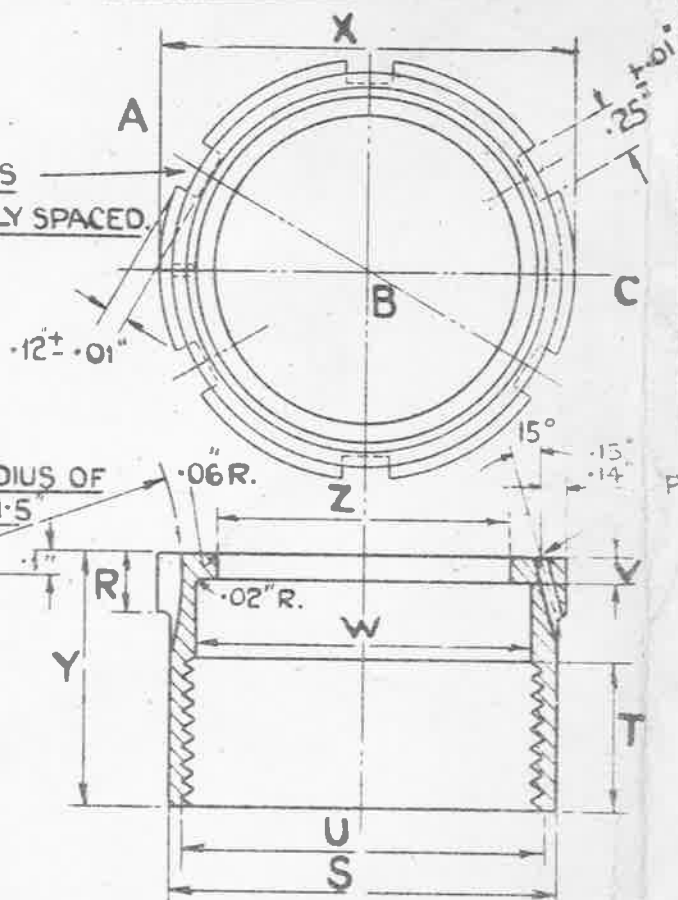
SCRAP VIEW
FOR MARK 'A' ONLY.



MARK A TO H.

6 SLOTS
EQUALLY SPACED.

MAX. RADIUS OF
CUTTER 1.5



MARK J & K - SECTION ON A.B.C.

MARK.	EXT. DIA. OF PIPE.	Z	Y	X		W	V	U	T	S	R	Q	P	GAUGE No
		DIA. DRILL	+0.02 -0	MAX: MIN:	+0.01 -0	+0.01 -0	THREAD	+0.02 -0	DIA. +0.01 -0	+0.02 -0	+0.01 -0	DIA. DRILL		
A	3/16"	7/32"	.63"	.525"	.520"	.337"	.10"	1/8" B.S.P.	.37"	.47"	.18"	.48"	1/16"	
B	1/4"	9/32"	.75"	.600"	.595"	.451"	.11"	1/4" B.S.P.	.42"	.58"	.19"	.55"	1/16"	127V
BB	5/16"	11/32"	.80"	.710"	.705"	.533"	.12"	19 T.P.I. 60° O/D	.46"	.67"	.20"	.67"	1/16"	
C	3/8"	13/32"	.83"	.820"	.815"	.589"	.12"	3/8" B.S.P.	.49"	.73"	.20"	.79"	1/16"	193V
CC	7/16"	15/32"	.85"	.920"	.915"	.659"	.12"	14 T.P.I. 75° O/D	.51"	.83"	.21"	.92"	1/16"	
D	1/2"	17/32"	.87"	1.010"	1.002"	.734"	.12"	1/2" B.S.P.	.53"	.91"	.21"	.96"	1/16"	349V
E	5/8"	21/32"	1.01"	1.100"	1.092"	.811"	.12"	5/8" B.S.P.	.67"	.99"	.22"	1.06"	1/16"	351V
F	3/4"	25/32"	1.06"	1.200"	1.192"	.950"	.12"	3/4" B.S.P.	.72"	1.14"	.22"	1.17"	1/16"	353V
G	7/8"	29/32"	1.10"	1.300"	1.292"	1.098"	.12"	7/8" B.S.P.	.72"	1.28"	.23"	1.26"	.076" (N°48)	355V
H	1"	1 1/32"	1.06"	1.480"	1.468"	1.193"	.12"	1" B.S.P.	.72"	1.42"	.23"	1.47"	.076" (N°48)	571V
J	1 1/4"	1 9/32"	1.11"	1.97"	1.95"	1.534"	.12"	1 1/4" B.S.P.	.72"	1.77"	.25"		.076" (N°48)	603V
K	1 1/2"	1 17/32"	1.3"	2.16"	2.14"	1.766"	.12"	1 1/2" B.S.P.	.75"	2.02"	.30"		.076" (N°48)	

MATERIAL :- STEEL TO BS. SPEC. N° S.I. (LATEST ISSUE).

SCREW THREADS TO BE IN ACCORDANCE WITH B.S. SPEC: 84.-
1940. FOR B.S.P MEDIUM FIT.

FINISH:- TO BE CADMIUM PLATED TO SPEC: D.T.D. 904 (LATEST ISSUE).

ISSUED BY
ROYAL
AIRCRAFT

TITLE:- METAL COUPLINGS (STEEL)
OUTER SLEEVE.

DRAWN BY
J.H. BRASPER

ISSUE No 14 51856

CHECKED
M.W. SKIPPEN