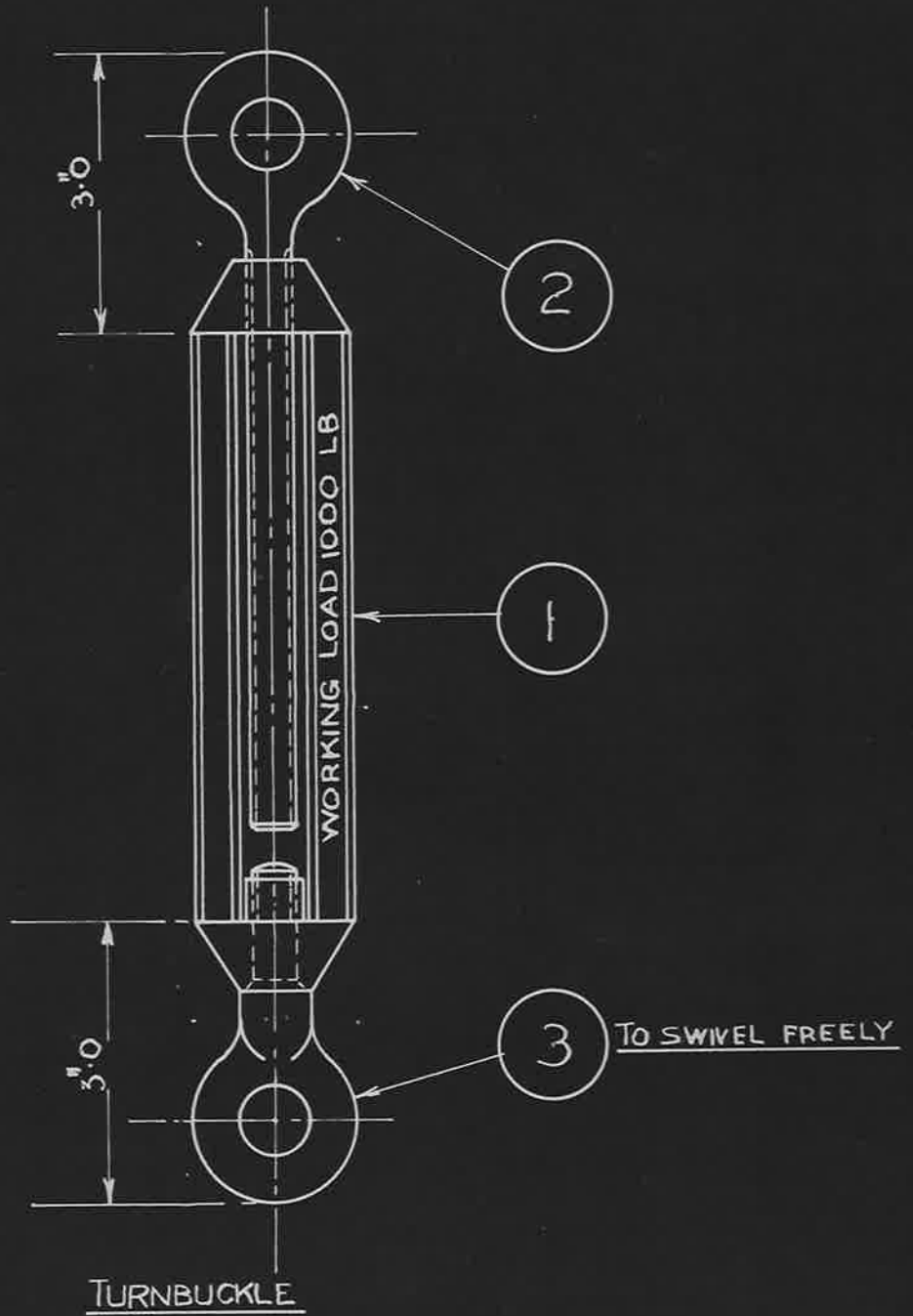


20-11-36  
574251/36

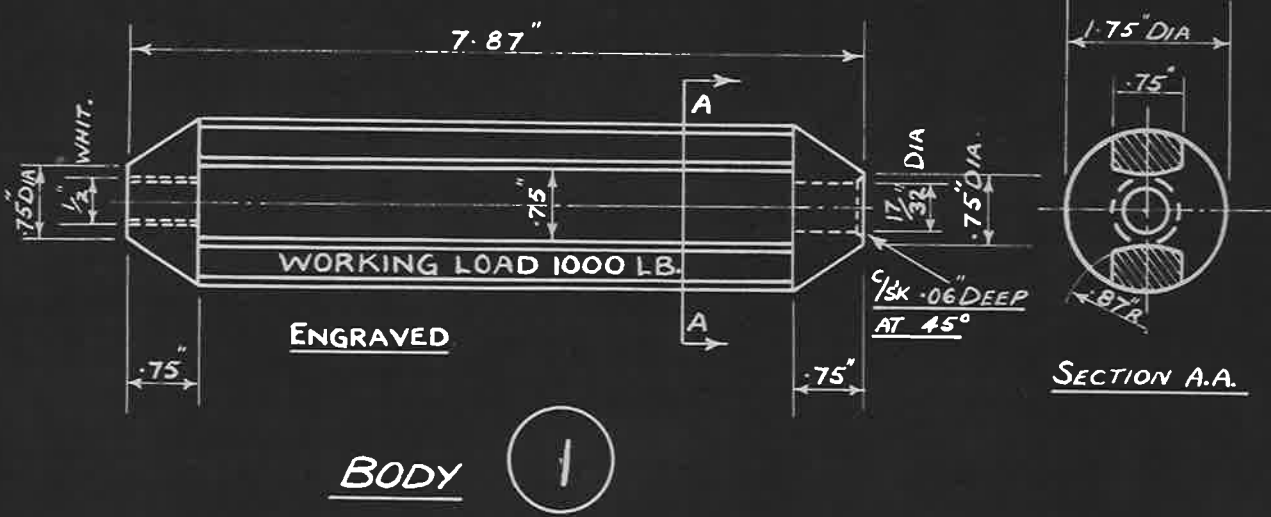
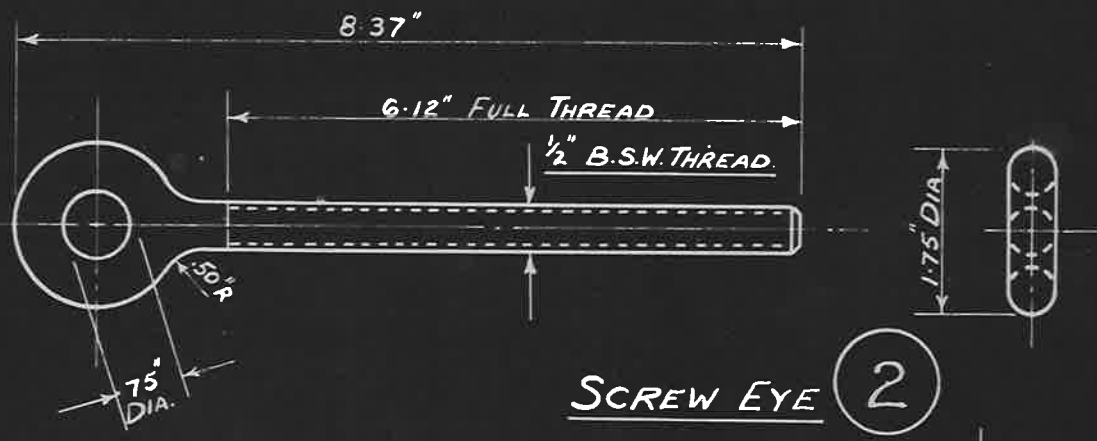
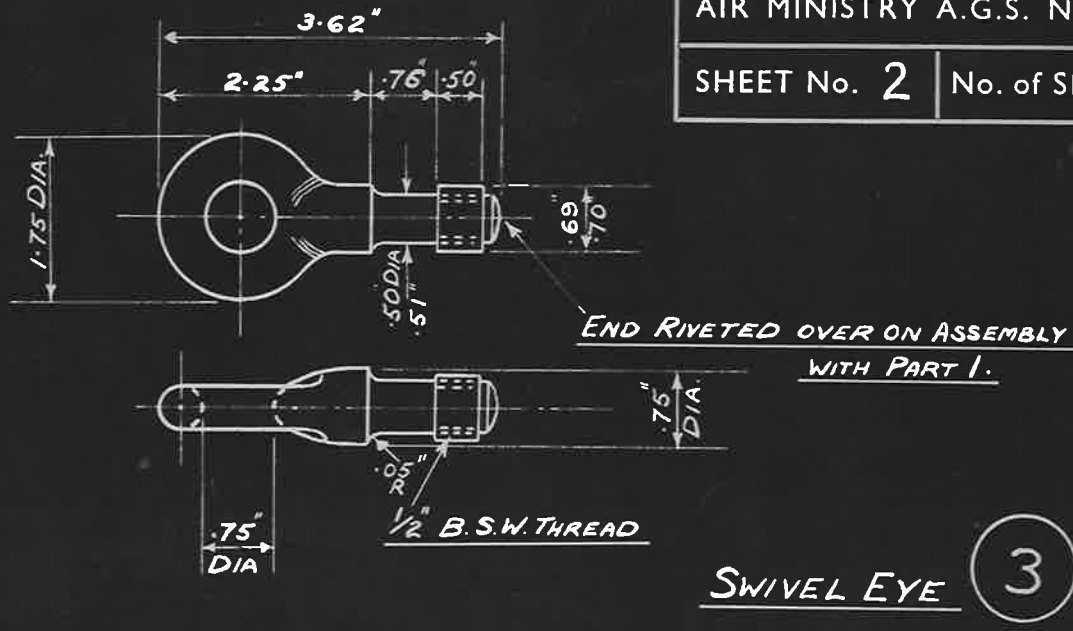


		DESCRIPTION.	QUAN <sup>y</sup>	MATERIAL	B.S. SPEC
1	AGS.961-1	BODY	1	STEEL	N <sup>o</sup> 29 PT 4 SPEC 8+9 CLASS B
2	AGS.961-2	SCREW EYE.	1	STEEL	
3	AGS 961-3	SWIVEL EYE	1	STEEL	

ULTIMATE LOAD (LBS)	PROOF LOAD (LBS)	WORKING LOAD (LBS)
4000	2000	1000

ISSUED BY DRAWING OFFICE DIRECTORATE OF TECHNICAL DEVELOPMENT AIR MINISTRY	TITLE— $\frac{1}{2}$ TURNBUCKLE ASSEMBLY AIRCRAFT HOLDING DOWN GEAR				RETRACED FOR A.P.C. MCCES	DRAWN <i>R. J. Marlow Thomas</i>	TRACED M.W. 21-1-36
	ISSUE No.	<i>1/2</i>				CHECKED <i>M.W. Kiphey</i>	APPROVED
	ALTERATION	<i>AGS 335</i>					

20.11.36.  
57425/36



**SPECIFICATION.**

THE MATERIAL TO BE OF STEEL TO BRITISH STANDARD SPECIFICATION N° 24 PART 4 SPECIFICATIONS 8 & 9 FOR CLASS B STEEL  
THE SCREWED COLLAR MAY BE MADE FROM SOLID DRAWN HOT FINISHED TUBING  
THE SCREW THREADS ARE TO BE, AFTER GALVANISING, IN ACCORDANCE WITH  
THE BRITISH STANDARD WHITWORTH B.S.W. SCREW THREADS AS GIVEN IN THE  
BRITISH STANDARD SPECIFICATION N° 92.

**FINISH:-**

TO BE HOT GALVANISED WITH A CONTINUOUS UNIFORM COATING OF VIRGIN  
SPELTER OF A GOOD COMMERCIAL BRAND CONTAINING NOT LESS THAN  
97 PER CENT ZINC  
ALL SCREW THREADS SHALL BE BRUSH OR SPUN GALVANISED

ISSUED BY DRAWING OFFICE DIRECTORATE OF TECHNICAL DEVELOPMENT AIR MINISTRY	TITLE— $\frac{1}{2}$ TURNBUCKLE. AIRCRAFT HOLDING DOWN GEAR		RETRACED FOR A.P.C. M.C.C. <i>cl</i>	DRAWN <i>Johnston</i>	TRACED R.G. 29.1.36
	ISSUE No. <i>23/10/36</i>			CHECKED <i>W. D. Jeffrey</i>	APPROVED
	ALTERATION	AGS 335			