

AGS 966 TO BE LEGIBLY AND DURABLY MARKED ON THIS OR OPPOSITE FACE

MINISTRY OF SUPPLY

AGS No. 966

SHEET No. 1

No. OF SHEETS 1

NOTE:- SEE S.I. 5 28 S⁴ FOR METHOD OF LOCKING

N^o 54 MORSE .055" HOLE DRILLED WITH HANDLE IN CLOSED POSITION.

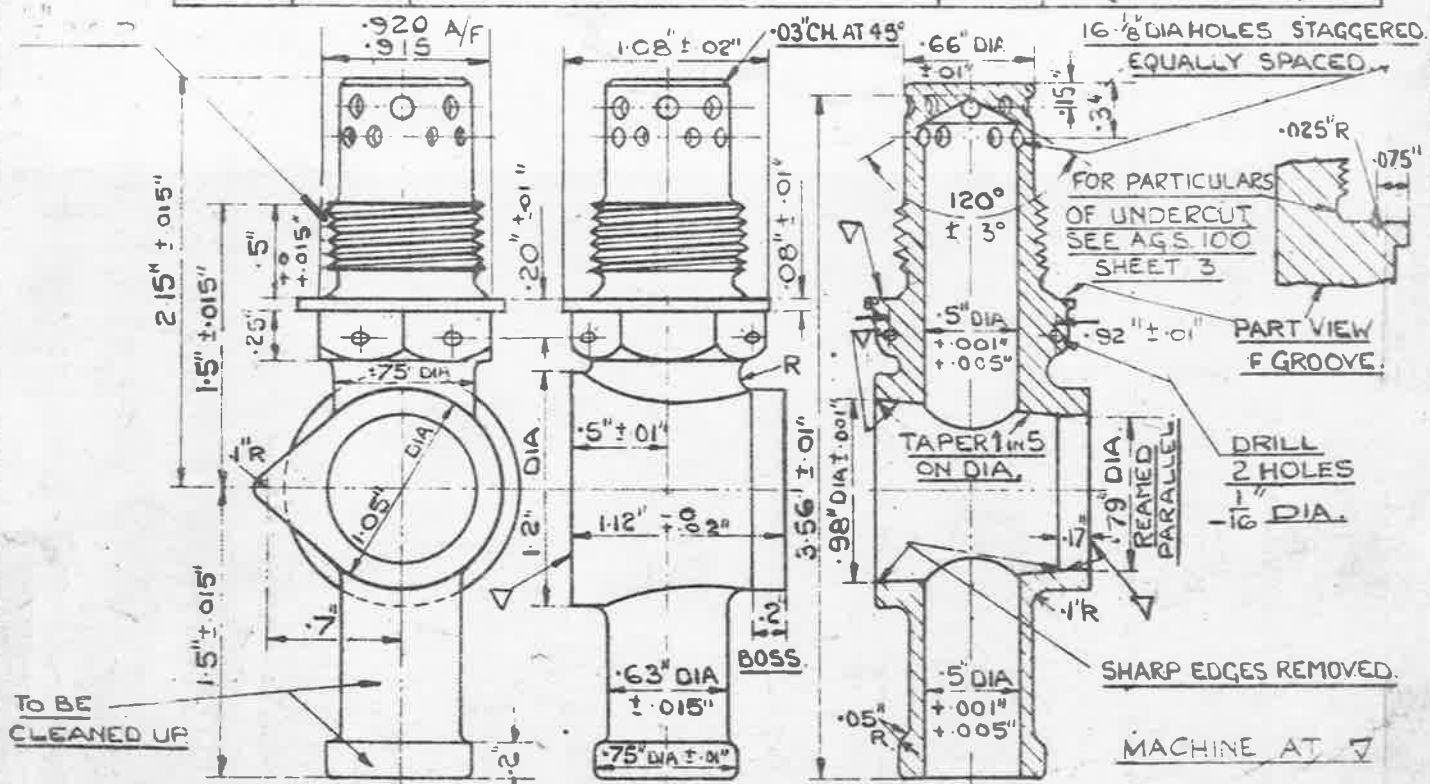
COCK TO WITHSTAND 15 LBS TEST PRESSURE WITHOUT LEAKAGE.

TAPER FACES TO BE RUN IN TOGETHER

GA OF 1/2" BORE COCK. (N^o 2 SIZE)

ONE COMPLETE COCK CONSISTS OF THE FOLLOWING PARTS:-

A.G.S. N ^o 677		PART	SHEET	N ^o OFF	MATERIAL	B.S. SPECIFICATION (LATEST ISSUE)
		BODY (PART 1 ON THIS SHEET)		1	BRASS	218 OR 1400
2	2	PLUG.		1	BRASS	249 OR 251
3	2	HANDLE.		1	BRASS & HOT STAMP SPRING STEEL	218, 249 OR 251
4	2	SPRING		1	BRASS	249 OR 251
5	2	NUT.		1	BRASS	249 OR 251
6	N.D.	JOINT WASHER.		1	LEATHER.	1-12" EXT DIA X .80" INT DIA X 3/32" THICK
7	SP.9/E.8	SPLIT PIN		1	LEATHER TO BE TO SPECIFICATION GENERAL STORES N ^o T.C. 3	
8	A.G.S. 1551	LOCKING PIN.		1		(LATEST ISSUE)



NOTE:- ALL SHARP EDGES & BURRS TO BE REMOVED

SCREW THREADS TO BE IN ACCORDANCE WITH B.S. SPEC: 84-1940. FOR B.S.P. MEDIUM FIT

CASTING TO BE SANDBLASTED AND CLEANED UP.

BODY.

FINISH TO BE CADMIUM PLATED TO SPEC: D.T.D. 904, (LATEST ISSUE) ALTERNATIVELY, ELECTRO-TIN TO SPEC: D.T.D. 924 (LATEST ISSUE)

MAT:- BRASS, B.S. SPEC: 218 OR 1400 (LATEST ISSUES).

ISSUED BY ROYAL AIRCRAFT ESTABLISHMENT

TITLE:- COCK. (N^o 2 SIZE) WITH DIFFUSER.

DRAW. CAPATTERSON. RE-TRACED MB. 24-1-39.

ISSUE No SM 6365

CHECKED CS. 20.8.36. APPROVED A.PITT. 20.8.36

ALTERATION No MOD/AGS 811

RE-CHECKED 22/7.2.39

557556/36

OBSOLESCE
NO FURTHER
MANUFACTURE

NOTE:- SEE S.I.S. 28 5^T 4
FOR METHOD OF LOCKING

A.G.S/966 TO BE
LEGIBLY AND
DURABLY MARKED
ON THIS OR
OPPOSITE FACE

MINISTRY OF
SUPPLY
AGS No. 966
SHEET No. 1 No. of SHEETS 1

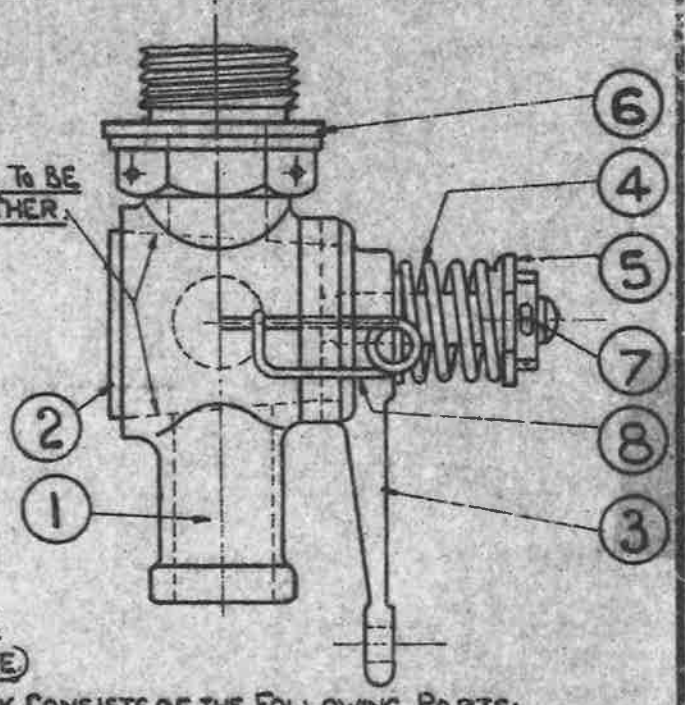
№ 54 MORSE
.055" HOLE DRILLED
WITH HANDLE IN
CLOSED POSITION.

COCK TO WITHSTAND
15 LBS. TEST PRESSURE
WITHOUT LEAKAGE.



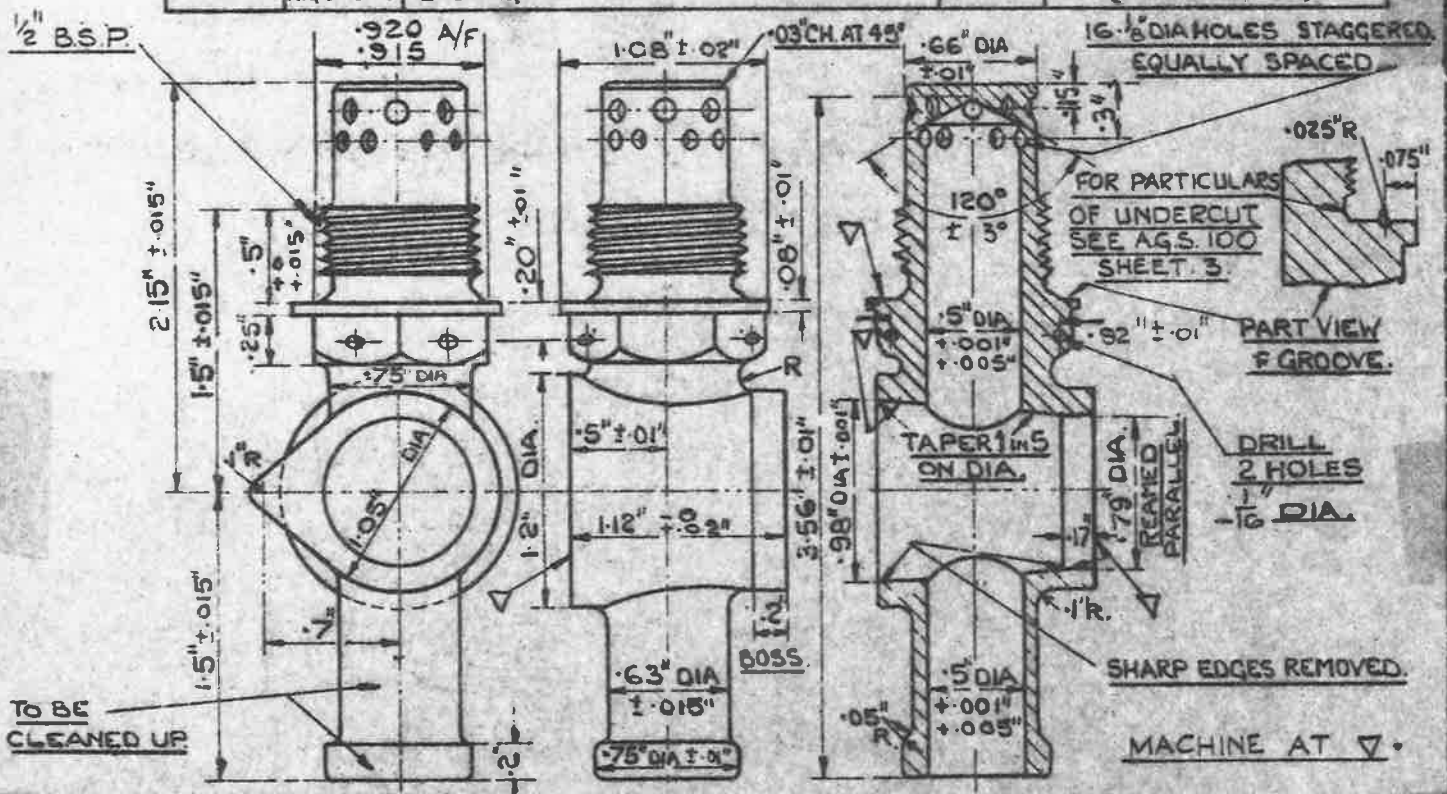
TAPER FACES TO BE
RUN IN TOGETHER.

G.A. OF 1/2 BORE
COCK. (№ 2 SIZE)



ONE COMPLETE COCK CONSISTS OF THE FOLLOWING PARTS:

A.G.S. № 677		№ OFF	MATERIAL	B.S. SPECIFICATION (LATEST ISSUE)
PART.	SHEET.			
		1	BRASS.	218 OR 1400
2	2	1	BRASS.	249 OR 251.
3	2	1	BRASS & NOT STAMP	218, 249 OR 251.
4	2	1	SPRING STEEL.	
5	2	1	BRASS.	249 OR 251.
6	N.D.	1	LEATHER.	1/2" EXT. DIA. X .80" INT. DIA. ± 1/32" THICK
7	SP.9/E.8	1	LEATHER TO BE TO SPECIFICATION GENERAL STORES № T.C.3.	
8	A.G.S. 1551.	1		(LATEST ISSUE)



NOTE:- ALL SHARP EDGES &
BURRS TO BE REMOVED
SCREW THREADS TO BE IN ACCORDANCE
WITH B.S. SPEC: 84-1940 FOR B.S.P.
MEDIUM FIT
CASTING TO BE SANDBLASTED AND CLEANED UP.

BODY.

FINISH

TO BE CADMIUM PLATED TO
SPEC: D.T.D. 904, (LATEST ISSUE)
ALTERNATIVELY, ELECTRO-TIN
TO SPEC: D.T.D. 924 (LATEST ISSUE)

MAT:- BRASS B.S. SPEC: 218 OR 1400 (LATEST ISSUES)

ED BY
DYAL
AIRCRAFT
ESTABLISHMENT

TITLE:- COCK. (№ 2 SIZE)
WITH DIFFUSER.

DRAW:
CAPATTERSON

RE-TRACED
MB. 24-1-39.

ISSUE No 8 547563

CHECKED.
CS. 20.8.36.

APPROVED
A.PITT. 20.8.36

ALTERATION No MOD/AGS 811 MOD/AGS 901

SE-CHECKED.
22.11.36