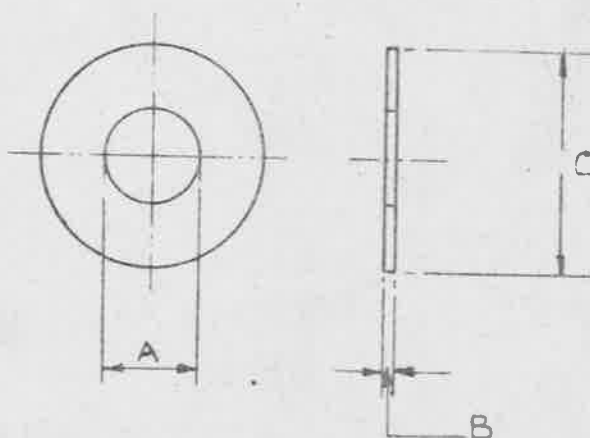


1/12



OBSOLESCE
SUPERSEDED BY
WASHERS SELECTED
FROM RANGE OF
BRITISH STANDARD
WASHERS S.P. 10.
TO S.P. 19.

MARK	MARK	A ± 0.02 "	B ± 0.05 "	C ± 0.03 "	SCREW SIZE
	A	.12"	.05"	.3"	6 BA
BN	B	.15"	.05"	.4"	4B.A
CN	C	.19"	.05"	.5"	2 BA
DN	D	.26"	.05"	.6"	$\frac{1}{4}$ " BSF
EN	E	.32"	.065"	.75"	$\frac{5}{16}$ " BSF
FN	F	.38"	.065"	.9"	$\frac{3}{8}$ " BSF
	G	.44"	.065"	1.0"	$\frac{7}{16}$ " BSF
	H	.51"	.065"	1.15"	$\frac{1}{2}$ " BSF
	I	.51"	.065"	.95"	
	J	X. MORSE .397"	.05"	.8"	
	K	.10"	.05"	.25"	

OBSOLESCE

Al Alloy
 BN = natural

MATERIAL:- ALUMINIUM ALLOY SHEET TO B.S. SPEC. L.3. (LATEST ISSUE).

FINISH:- FOR MARKS A TO K INCLUSIVE. ANODISED TO SPEC. D.T.D. 910 (LATEST ISSUE).

FOR MARKS BN TO FN INCLUSIVE - NATURAL.

ISSUED BY THE
 ROYAL AIRCRAFT
 ESTABLISHMENT.

TITLE:- WASHERS.
 (ALUMINIUM ALLOY)

ISSUE No 6 7
 ALTERN No AGS. No 331 794

DRAWN
 From S.A.E. Dwg
 C.T. Reynolds

TRACED
 9.5.44
 13-7-44

CHECKED
 J. Moore

APPROVED
 15-7-44