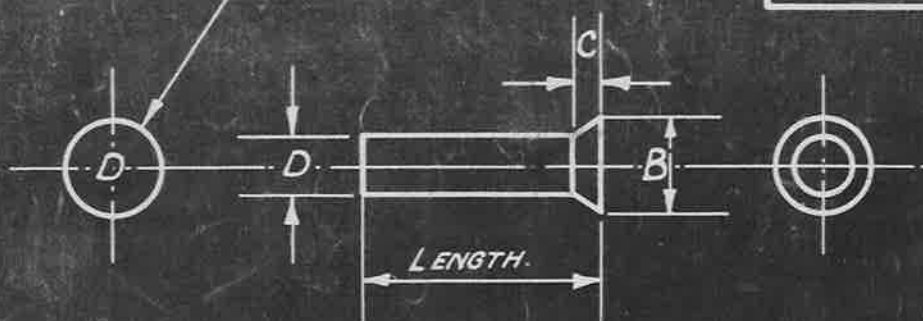


NOTE:- ALL RIVETS $\frac{3}{32}$ " DIA. & LARGER TO BE MARKED "D" ON HEAD.



SUPERSEDED BY A.G.S. 500 FOR ALL FUTURE DESIGNS.

DIAMETER 'D'	$\frac{1}{16}$ "	$\frac{3}{32}$ "	$\frac{1}{8}$ "	$\frac{5}{32}$ "	$\frac{3}{16}$ "	$\frac{7}{32}$ "	$\frac{1}{4}$ "	$\frac{9}{32}$ "	$\frac{5}{16}$ "	$\frac{11}{32}$ "	$\frac{3}{8}$ "
HEAD DEPTH 'C'	.025"	.038"	.05"	.063"	.075"	.088"	.100"	.113"	.125"	.138"	.150"
HEAD DIAMETER 'B'	.10"	.15"	.20"	.25"	.30"	.35"	.40"	.45"	.50"	.55"	.60"
LENGTH	PART NUMBERS.										
$\frac{3}{16}$ "	1A	1	15								
$\frac{1}{4}$ "	2A	2	16	30	44						
$\frac{5}{16}$ "	3A	3	17	31	45	59	73				
$\frac{3}{8}$ "	4A	4	18	32	46	60	74	88	102		
$\frac{7}{16}$ "	5A	5	19	33	47	61	75	89	103	117	131
$\frac{1}{2}$ "	6A	6	20	34	48	62	76	90	104	118	132
$\frac{5}{8}$ "	7A	7	21	35	49	63	77	91	105	119	133
$\frac{3}{4}$ "	8A	8	22	36	50	64	78	92	106	120	134
$\frac{7}{8}$ "	9A	9	23	37	51	65	79	93	107	121	135
1"	10A	10	24	38	52	66	80	94	108	122	136
$1\frac{1}{4}$ "				39	53	67	81	95	109	123	137
$1\frac{1}{2}$ "			26			68	82	96	110	124	138
$1\frac{3}{4}$ "			27					97	111	125	139
2"									126	140	

To BE ANODICALLY TREATED

SPECIFICATION:- THE MATERIAL TO BE LIGHT ALLOY TO B.S. SPECIFICATION

L37. (LATEST ISSUE)

FOR ALL BEAUFORT PRODUCTION IN AUSTRALIA D.T.O. 303 OR D.T.O. 327. LIMITS ARE TO BE USED WHERE L37 (DURALUMIN) ARE CALLED FOR, UNLESS OTHERWISE STATED ON INDIVIDUAL DRAWINGS.

ALL RIVETS SHALL BE QUENCHED FROM A TEMPERATURE OF $490 \pm 10^\circ C$.

IN COLD WATER, IMMEDIATELY BEFORE USE.

ISSUED BY DRAWING OFFICE
DIRECTORATE
OF TECHNICAL
DEVELOPMENT
AIR MINISTRY.

TITLE:- LIGHT ALLOY
COUNTERSUNK HEAD RIVETS

DRAWN
M.W. SHIPPEY
RE-TRACE
R.G.
30-1-39

ISSUE NO X.J.M. 8.J.M. 5 P 5 SEE MARGN
ALT. NO R.E.S. 339 R.E.S. 351 R.E.S. 184 W.S. 101 A.S. 387

CHECKED
H.T. HOAR
R.B. BASTABLE
RE-CH. 13-1-39
APPROVED
G.W.
27-2-37