

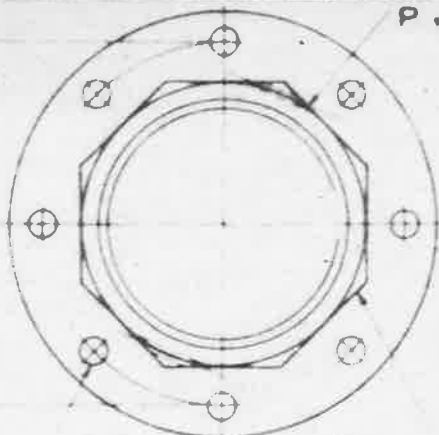
(P)

BASED ON BLACKBURN AIRCRAFT, LTD DRG NFP 25

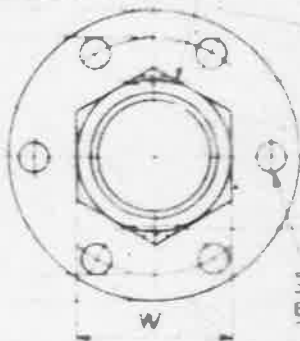
MINISTRY OF AIRCRAFT PRODUCTION

AGS. N° 980

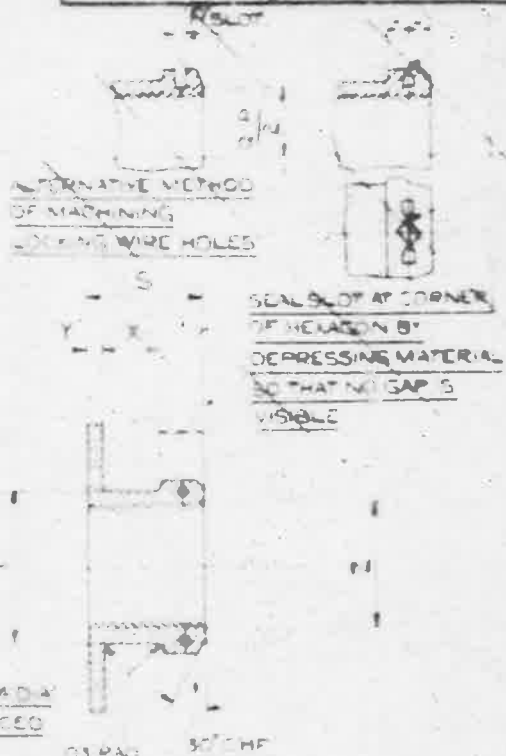
SHEET N° 1 N° OF SHEETS 1



FOR MARKS J & K ONLY EIGHT HOLES 1/4 DIA EQUALLY SPACED AND EIGHT FLATS



SIX HOLES 1/4 DIA EQUALLY SPACED



MARK	Z B.S.P. THREAD	Y +01" -0	X ±.005"	W MIN · MAX	V ±.005"	U ±.005"	T +01" -0	S ±.01"	Q ±.01"	P DIA DRILL
A	1/8"	08"	35"	.520" .525"	1.42"	1.025"	.495"	60"	48"	1/16"
B	1/4"	08"	35"	.705" .70"	1.60"	1.10"	.63"	60"	67"	1/16"
BB	1/4" (STEP WITH FORM 60° D)	08"	35"	.760" .765"	1.60"	1.20"	.71"	67"	73"	1/16"
C	3/8"	08"	35"	.815" .820"	1.70"	1.30"	.77"	67"	79"	1/16"
CC	3/8" (STEP WITH FORM 75° D)	08"	35"	.915" .920"	1.80"	1.40"	.87"	70"	92"	1/16"
D	1/2"	08"	40"	1.002" 1.010"	1.90"	1.50"	.99"	75"	96"	1/16"
E	5/8"	08"	45"	1.092" 1.100"	2.00"	1.60"	1.06"	85"	1.06"	1/16"
F	3/4"	08"	50"	1.192" 1.200"	2.10"	1.70"	1.18"	90"	1.17"	1/16"
G	7/8"	08"	50"	1.382" 1.390"	2.25"	1.85"	1.34"	95"	1.37"	076 (N° 48)
H	1"	08"	50"	1.468" 1.480"	2.35"	1.95"	1.46"	95"	1.47"	076 (N° 48)
J	1 1/4"	08"	50"	1.845" 1.860"	2.75"	2.35"	1.80"	95"	1.85"	076 (N° 48)
K	1 1/2"	08"	50"	2.200" 2.220"	3.15"	2.70"	2.10"	1.00"	2.14"	076 (N° 48)

THE MATERIAL TO BE LIGHT ALLOY TO SPEC D.T.D. 423 (LATEST ISSUE)

FINISH - TO BE ANODISED TO SPEC D.T.D. 410 (LATEST ISSUE)  
NOTE - SCREW THREADS TO B.S. SPEC N° 04 - 1940, MEDIUM FIT.

ISSUED BY THE ROYAL AIRCRAFT ESTABLISHMENT	TITLE - FEMALE FLANGES (BOLTED) LIGHT ALLOY)
	ISSUE NO. 2 ALTERN° NO.