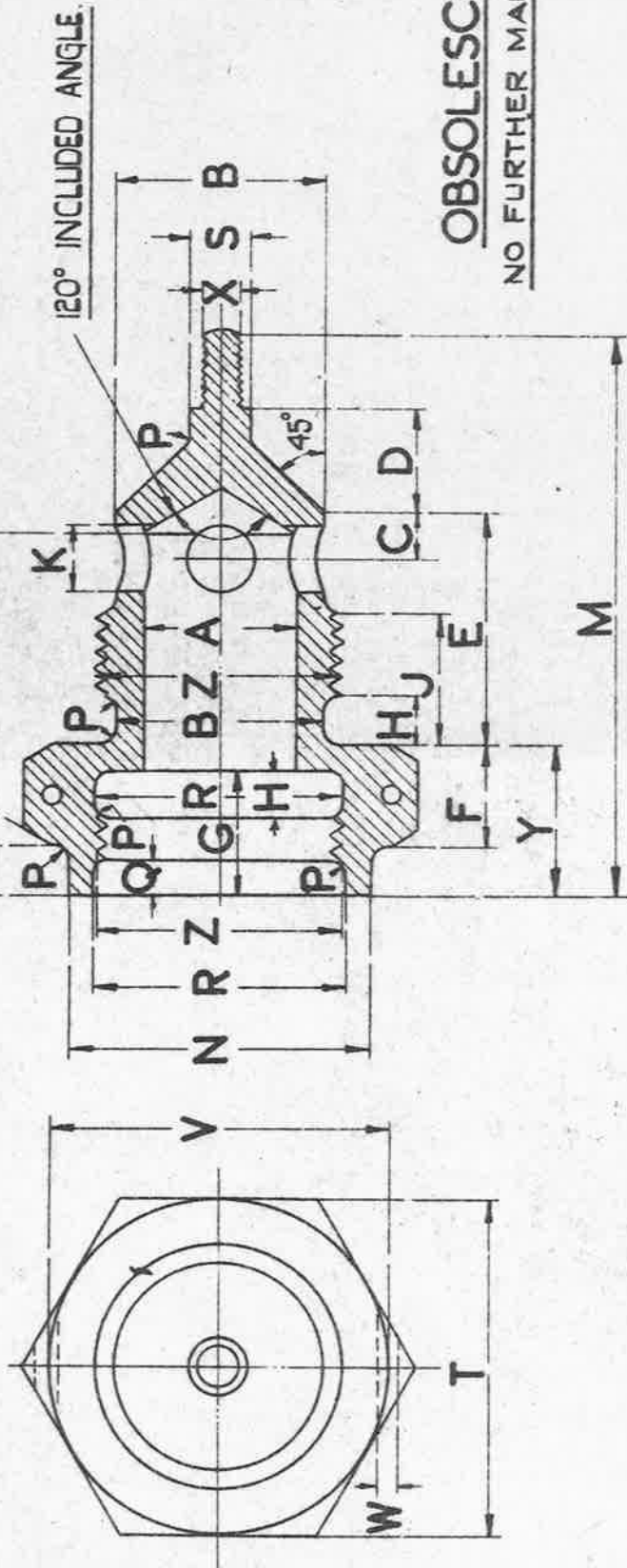


11.9.46
Res. AGS. 142.

FOR ASSEMBLY SEE AGS. 989.



OBSOLESCENT
NO FURTHER MANUFACTURE

SPECIFICATION:-
 MAT:- STEEL (NON - CORRODING) TO B.S. SPEC. 5.80 (LATEST ISSUE)
 SCREW THREADS TO BE IN ACCORDANCE WITH B.S. SPEC. 84 - 1940 FOR B.S.F. (MALE THREAD 'Z' TO BE MEDIUM FIT TRUNCATED)
 AND B.S. SPEC. 93 FOR B.A. THREAD.

MARK	A	B	C	D	E	F	G	H	J	K	L	M	N	P	Q	R	S	T	V	W	X	Y
Z	DRILL ±.01"	±.01"	±.01"	±.01"	±.01"	±.01"	±.01"	±.01"	±.01"	DRILL ±.01"	±.01"	±.02"	±.01"	±.01"	±.01"	±.01"	±.01	MAX. MIN.	±.01"	DRILL		±.01"
	13/32	.57	.13	.43	.63	.31	.39	.14	.37	3/16	1.06	1.72	.85	.04	.13	.68	.17	.920	.915	.92	1/16	6BA .46

ISSUED BY
ROYAL
AIRCRAFT
ESTABLISHMENT

TITLE:- WATER DRAIN PLUGS FOR FUEL TANKS. - PLUGS.
SM563

ISSUE No	11.9.46	2
ALTER ^N No	MOD. No	MOD. No
	AGS/592	AGS/902

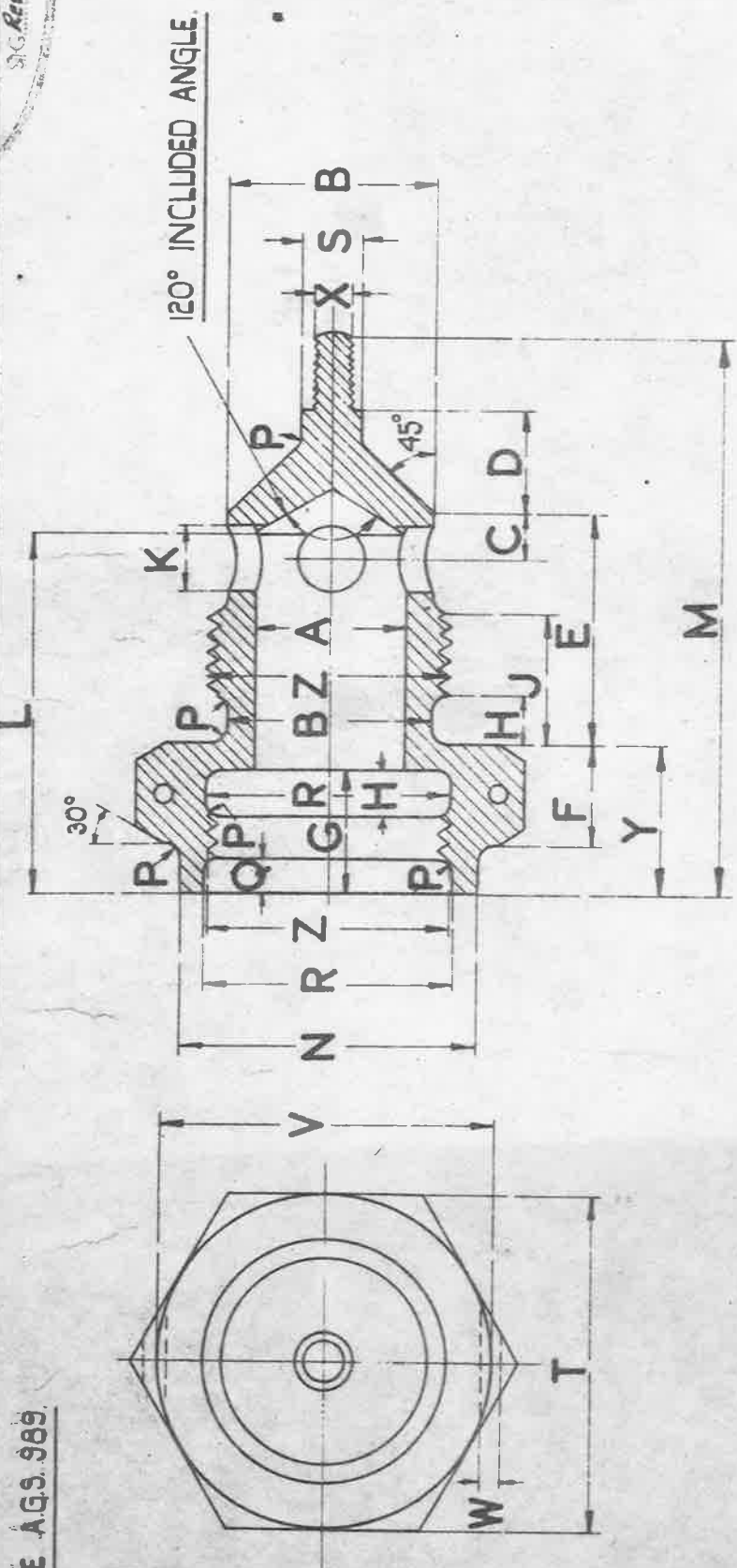
DRAWN
H.P. Snell

CHECKED
Shitka

TRACED
BEH.
27-5-46

APPROVED
Jona 30/5/46

DATE 11.9.46
 AGS. No. 991



FOR ASSEMBLY SEE AGS. 989.

SPECIFICATION :-
 MATL:- STEEL (NON - CORRODING) TO B.S. SPEC. 5.80 (LATEST ISSUE)
 SCREW THREADS TO BE IN ACCORDANCE WITH B.S. SPEC. 84 - 1940 FOR B.S.F. (MALE THREAD 'Z' TO BE MEDIUM FIT TRUNCATED)
 AND B.S. SPEC. 93 FOR B.A. THREAD.

MARK	Z	A	B	C	D	E	F	G	H	J	K	L	M	N	P	Q	R	S	T	V	W	X	Y
	B.S.P. THREAD	DRILL ±.01"	±.01"	±.01"	±.01"	±.01"	±.01"	±.01"	±.01"	±.01"	DRILL ±.01"	±.01"	±.02"	±.01"	±.01"	±.01"	±.01"	±.01"	MAX. MIN. ±.01"	DRILL ±.01"		±.01"	-0
	3/8"	13/32"	.57"	.13"	.43"	.63"	.31"	.39"	.14"	.37"	3/16"	1.06"	1.72"	.85"	.04"	.13"	.68"	.17"	.920"	.915"	.92"	1/16"	6BA .46"

ISSUED BY ROYAL AIRCRAFT ESTABLISHMENT

TITLE:- WATER DRAIN PLUGS FOR FUEL TANKS. - PLUGS.

ISSUE No 14.9.46
 ALTER^N No MOD. No AGS/492

DRAWN W.P. Snell.

TRACED BEH. 27-5-46

CHECKED Shute

APPROVED [Signature] 30/5