

WORKING SURFACES AND HOLES A TO BE WELL OILED ON ASSEMBLY WITH ANTI-FREEZING OIL. HOLES A FINISHED GROUND AFTER ZINC OR CADMIUM PLATING TO $.66 \pm .01$ DIA. WITH JAWS HARD CLOSED.

MINISTRY OF AIRCRAFT PRODUCTION

AGS.No. 994

SHEET No.1

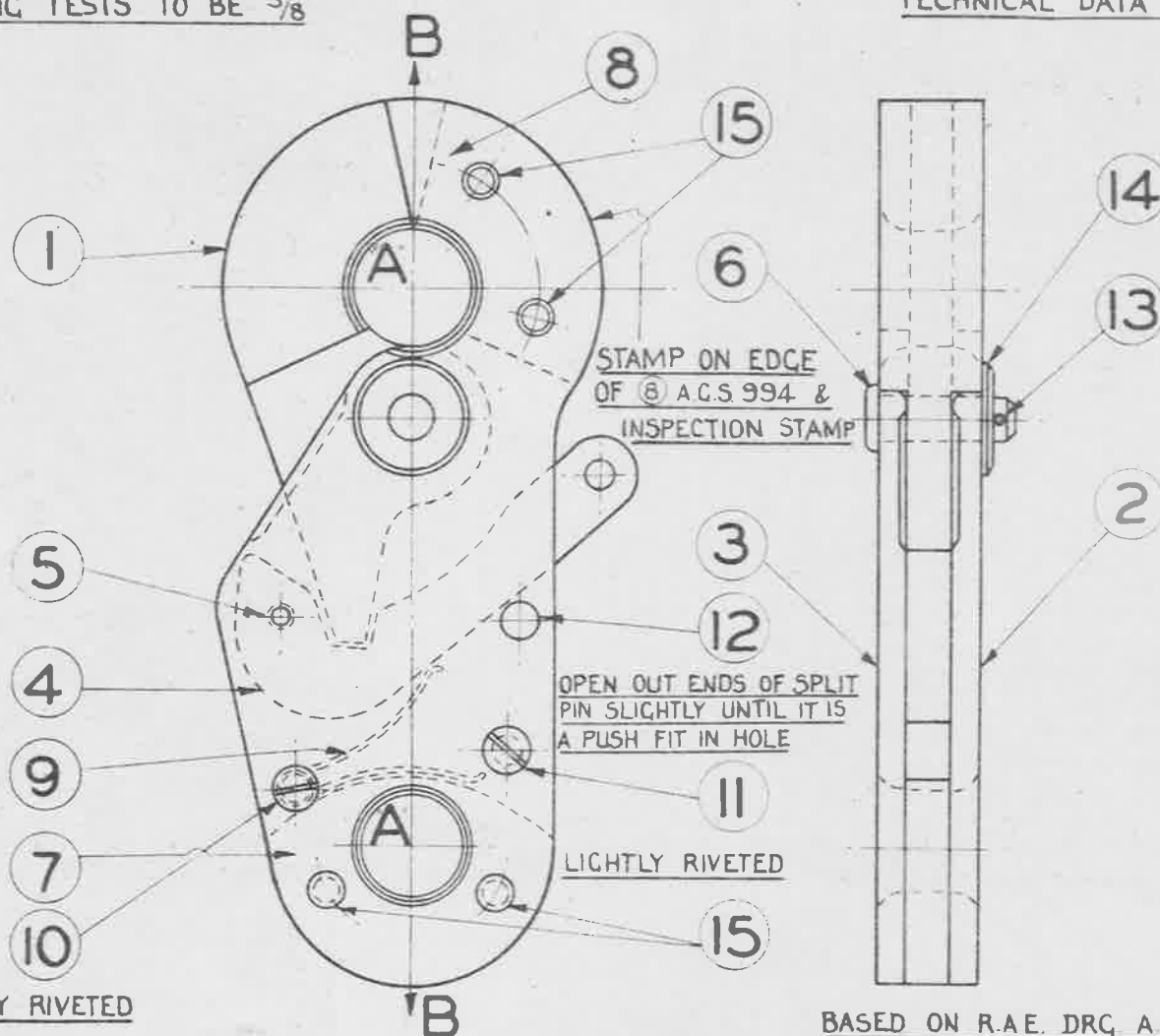
No. OF SHEETS 9

TESTING REQUIREMENTS :-

1. A 5600 LB. PROOF LOAD TO BE APPLIED IN DIRECTION OF ARROW 'B' & RELEASE SLIPPED ONCE ON EACH ASSEMBLY WHILE UNDER LOAD.
2. THE FIRST THREE SUBMITTED ON EACH CONTRACT ARE TO BE TESTED 25 TIMES EACH AS AT 1.
3. A SELECTED 5% OF CONTRACT TO BE TESTED 10 TIMES EACH AS AT 1.
4. MINIMUM DIA OF LOADING BAR USED IN HOLES A DURING TESTS TO BE $\frac{3}{8}$ "

ULTIMATE LOAD (LB)	PROOF LOAD (LB)	WORKING LOAD (LB)
11,200	5,600	2,800

TECHNICAL DATA ONLY



LIGHTLY RIVETED

BASED ON R.A.E. DRG. AD 6038

ITEM		DESCRIPTION	MATL	SPEC	QUANTY	REMARKS
1	AGS.994-1	TRIP HOOK	STEEL	DTD 331	1	
2	AGS.994-2	CHEEK PLATE. R.H	STEEL	DTD 331	1	
3	AGS.994-3	CHEEK PLATE LH	STEEL	DTD 331	1	
4	AGS.994-4	RELEASE TRIGGER	STEEL	DTD 331	1	
5	AGS.994-5	TRIGGER PIN	STEEL	DTD 331	1	
6	AGS.994-6	MAIN PIN	STEEL	DTD 331	1	
7	AGS.994-7	LOWER DISTANCE PIECE	STEEL	SI OR S3	1	
8	AGS.994-8	JAW DISTANCE PIECE	STEEL	SI OR S3	1	
9	AGS.994-9	SPRING	STEEL	DTD.187	1	
10	AGS.994-10	SCREW 4 BA	STEEL	S 2	1	
11	AGS.994-11	SCREW 2 BA	STEEL	S 2	1	
12	AGS.166-35	$\frac{3}{16}$ SPLIT PIN			1	
13	AGS.166-1	$\frac{1}{16}$ SPLIT PIN FOR 6			1	
14	AGS.160-D	WASHER FOR 6			1	
15	AGS.261-21	RIVETS			4	

ISSUED BY ROYAL AIRCRAFT ESTABLISHMENT

TITLE - QUICK RELEASE ASSEMBLY ($\frac{5}{8}$) AIRCRAFT HOLDING DOWN GEAR

DRAWN

TRACED
L. COOK
29-4-48

ISSUE N°

1

2

CHECKED

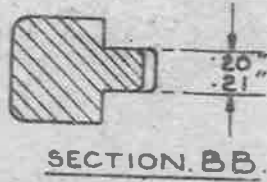
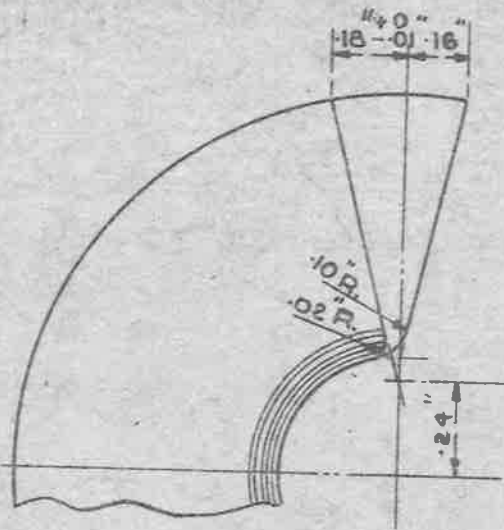
APPROVED

ALTER N° N°

MOD N°
AGS/607

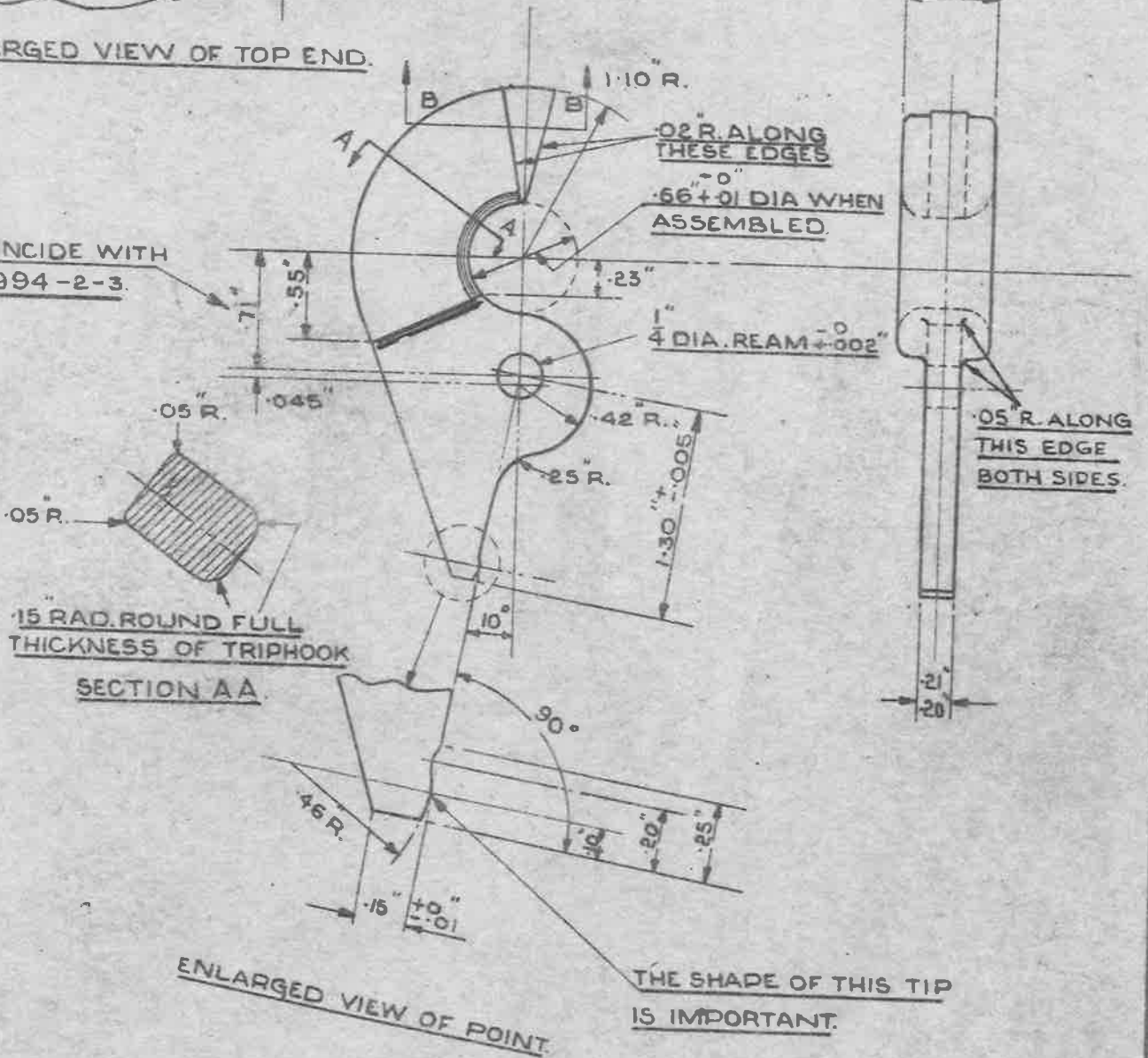
MOD N°
AGS/638

LIMITS WHERE NOT OTHERWISE STATED TO BE $\pm .01$ "



ENLARGED VIEW OF TOP END.

TO COINCIDE WITH A.G.S. 994-2-3.



.15 RAD. ROUND FULL THICKNESS OF TRIPHOOK

SECTION AA

ENLARGED VIEW OF POINT

THE SHAPE OF THIS TIP IS IMPORTANT.

TRIP HOOK (1)

SPECIFICATION: NICKEL-CHROMIUM STEEL TO SPEC. DTD 331.
MATERIAL: (LATEST ISSUE)
FINISH: CADMIUM PLATED TO SPEC. D.T.D. 904 (LATEST ISSUE)

15.5.46 7.11.46

ISSUE NO	2	3	4	5	6	7	8	9	10	11	12	13	14	15	16	17	18	19	20
ALTER ^N NO	A.S. NO AGS/419	MOD. NO AGS/636																	

ISSUED BY ROYAL AIRCRAFT ESTABLISHMENT.

TITLE:- QUICK RELEASE AIRCRAFT HOLDING DOWN GEAR

DRAWN <i>Hgs.</i>	TRACED <i>H.S. Johnson</i> 30/10/45.
CHECKED <i>Slutberg</i>	APPROVED <i>H.M.</i> 2/11/45.

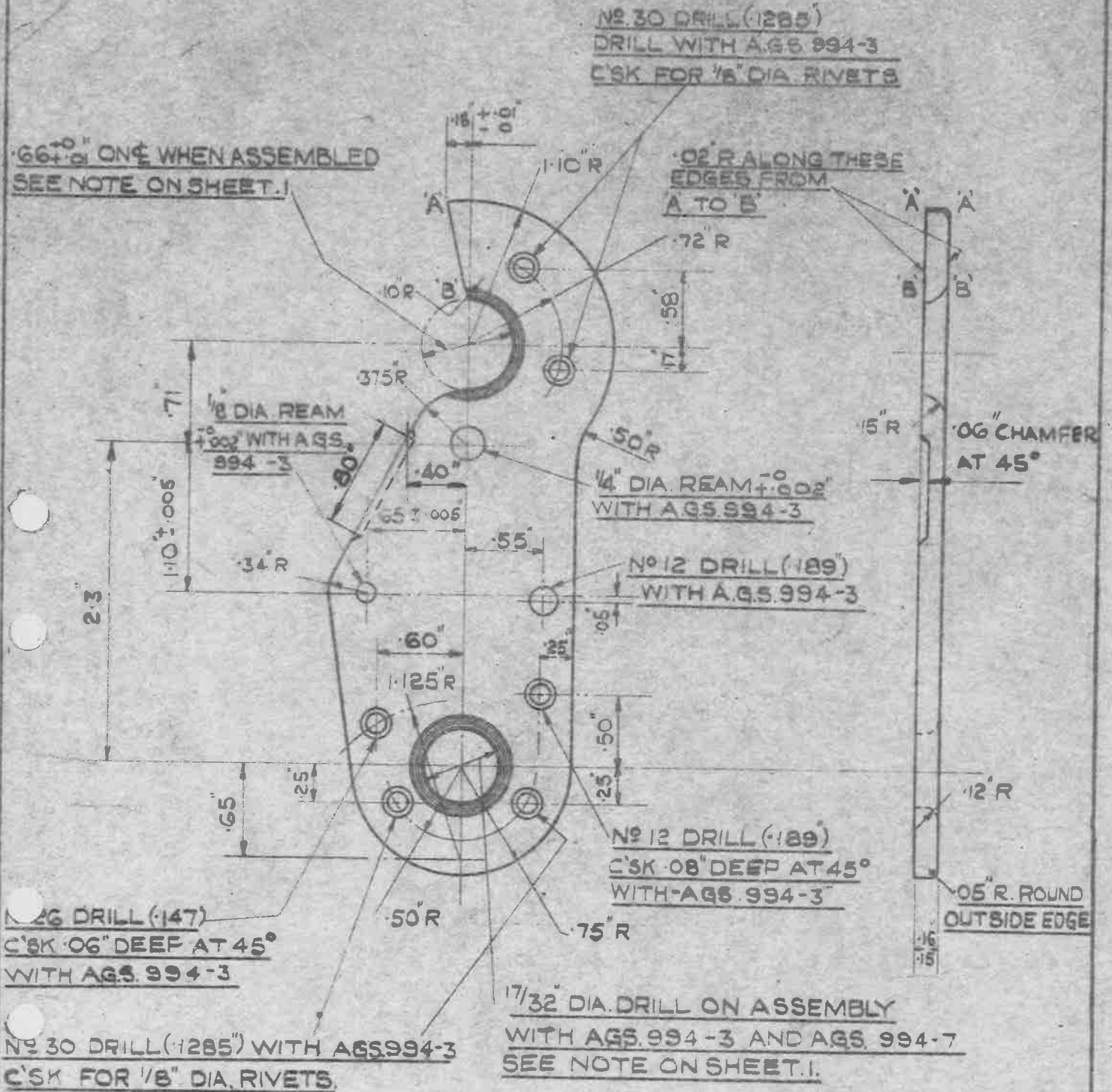
LIMITS WHERE NOT OTHERWISE STATED TO BE ±.01"

MINISTRY OF AIRCRAFT PRODUCTION

AGS.No. 994

SHEET No.3

No. OF SHEETS 9



CHEEK PLATE
R.H.

(2)

SPECIFICATION:- MATERIAL :- NICKEL CHROMIUM STEEL TO SPEC DTD 331 (LATEST ISSUE)

FINISH:-

CADMIUM PLATED TO SPEC DTD 904. (LATEST ISSUE)

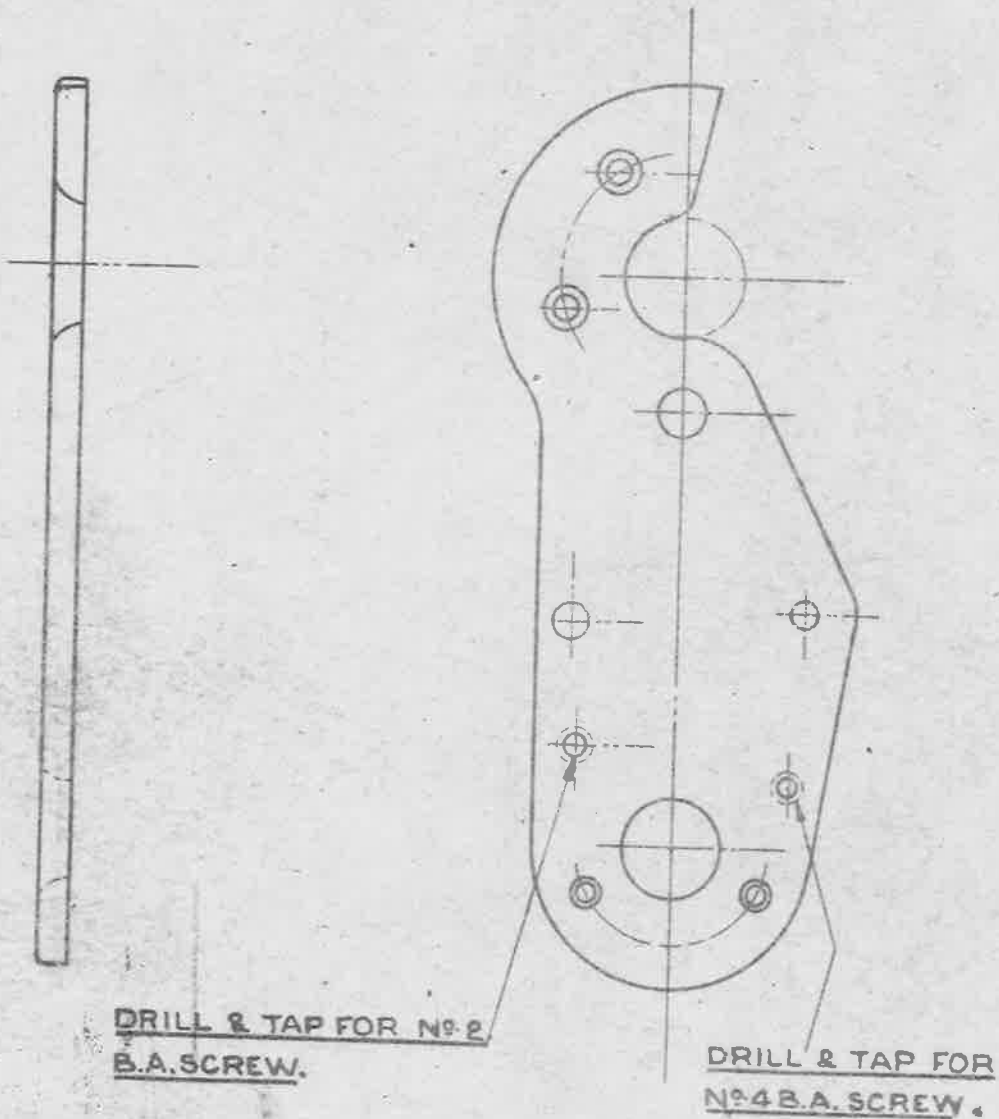
15-5-46

ISSUE NO	2	3							
ALTER ^N NO	AS. NO ACS/419	MOD. N° AES/626							
ISSUED BY THE ROYAL AIRCRAFT ESTABLISHMENT	TITLE:- QUICK RELEASE AIRCRAFT HOLDING DOWN GEAR				DRAWN HPS		TRACED 8-11-45		
					CHECKED Shipping		APPROVED 13/11/45		

LIMITS WHERE NOT OTHERWISE STATED TO BE $\pm .01$ "

MINISTRY OF AIRCRAFT PRODUCTION **AGS No. 994.**

SHEET No. 4 | **No. OF SHEETS 9**



ALL OTHER DIMENSIONS AS A.G.S. 994 -2.

CHEEK PLATE
L.H.

3

SPECIFICATION:-

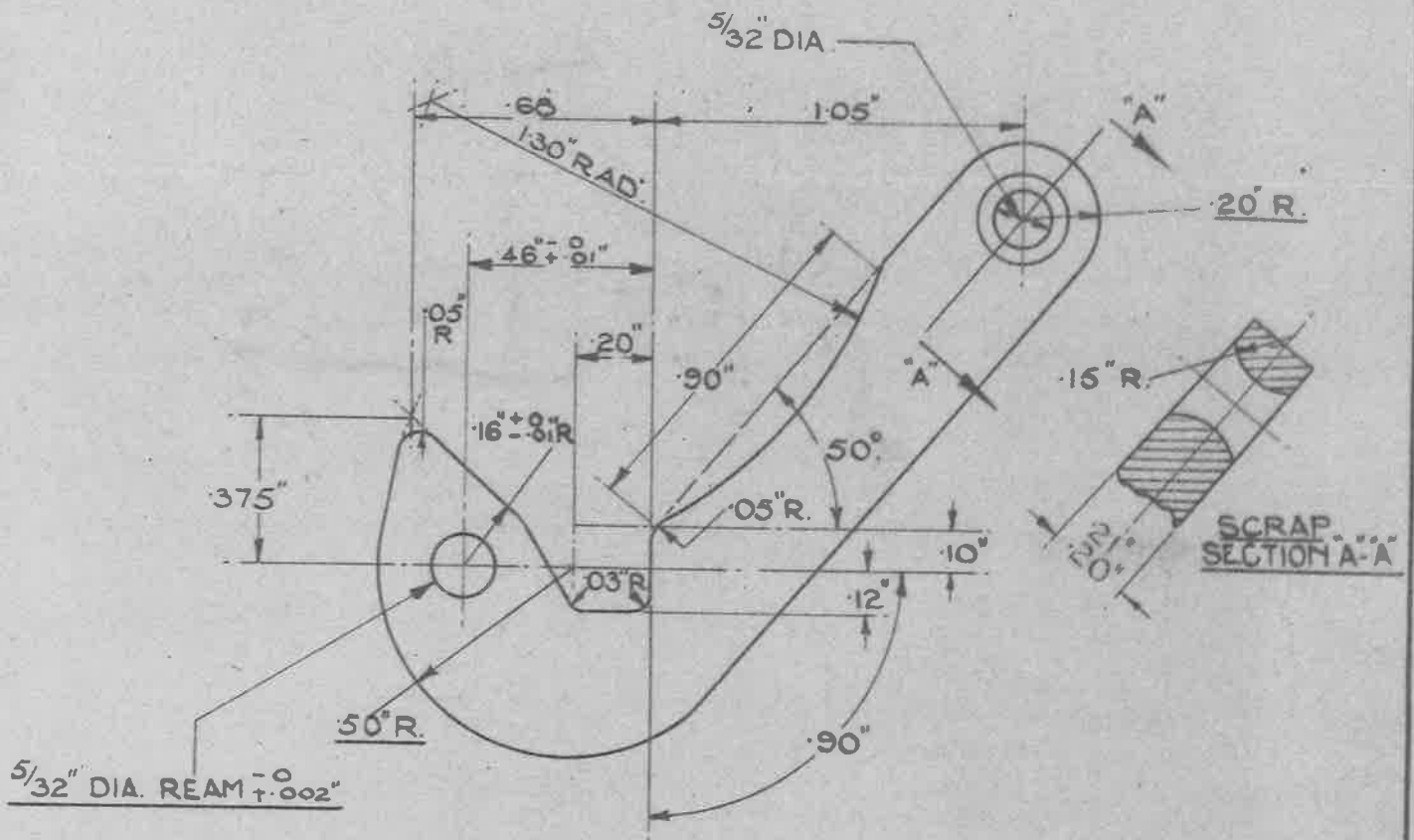
THE MATERIAL TO BE NICKEL - CHROMIUM STEEL TO SPEC. DTD. 331.

SCREW THREADS:- BRITISH ASSOCIATION TO B.S. SPECN. NO 93. (LATEST ISSUE)

FINISH:- CADMIUM PLATED TO SPEC. D.T.D. 904 (LATEST ISSUE)

15-5-46 7.11.46

ISSUE NO	2	3												
ALTERN NO	AS. NO AGS/419	MOD. NO AGS/636												
ISSUED BY ROYAL AIRCRAFT ESTABLISHMENT.	TITLE:- QUICK RELEASE AIRCRAFT HOLDING DOWN GEAR.										DRAWN <i>AGS.</i>	TRACED <i>H.S. JOHNSON.</i> 2/11/45.		
											CHECKED <i>Shib...</i>	APPROVED <i>HMA</i> 12/11/45		



RELEASE TRIGGER 4

MATERIAL:- NICKEL - CHROMIUM STEEL TO SPEC. D.T.D. 331 (LATEST ISSUE)

FINISH:- CADMIUM PLATED TO SPEC. D.T.D. 904 (LATEST ISSUE.)

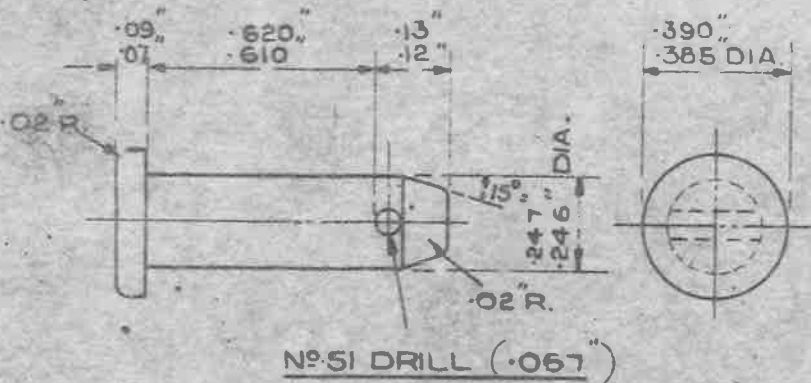
ISSUE No.	2	3												
ALTER. No.	AS. No.	MOD. No.												
	AGS/419	AGS/635												
ISSUED BY ROYAL AIRCRAFT ESTABLISHMENT	TITLE - <u>QUICK RELEASE AIRCRAFT HOLDING DOWN GEAR.</u>								DRAWN H.J.S.	TRACED SMITKEN 4-8-49				
									CHECKED	APPROVED				

LIMITS WHERE NOT OTHERWISE STATED TO BE $\pm .01$

MINISTRY OF AIRCRAFT PRODUCTION. **AGS No. 994**

SHEET No. 6 No. OF SHEETS 9

DIMENSIONS GIVEN ARE PRIOR TO COATING

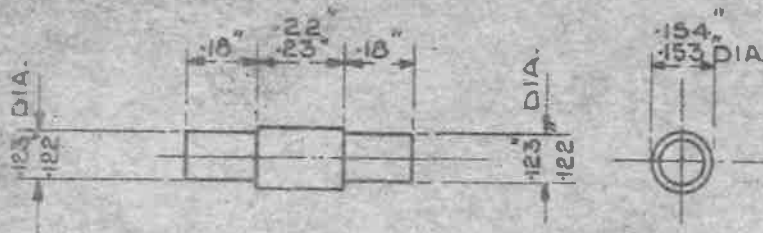


MAIN PIN.

6

LIMITS WHERE NOT OTHERWISE STATED TO BE $\pm .01$

DIMENSIONS GIVEN ARE PRIOR TO COATING.



TRIGGER PIN.

5

SPECIFICATION:- MATERIAL:- NICKEL CHROMIUM STEEL TO SPEC DTD 331 (LATEST ISSUE)
~~MATERIAL TO BE TO BRITISH STANDARD SPECIFICATION 28 (LATEST ISSUE)~~

FINISH:- CADMIUM PLATED TO SPEC. DTD. 904 (LATEST ISSUE)

ISSUE NO	2	3							
ALTN NO	AS NO	MOON							
	AGS/419	AGS/626							

ISSUED BY
ROYAL
AIRCRAFT
ESTABLISHMENT.

TITLE:- QUICK RELEASE.
AIRCRAFT HOLDING DOWN GEAR

DRAWN
H.S.

TRACED
J.S. Johnson
31/10/45

CHECKED
Shirley

APPROVED
[Signature]

LIMITS WHERE NOT OTHERWISE STATED TO BE $\pm .01$ "

MINISTRY OF AIRCRAFT PRODUCTION

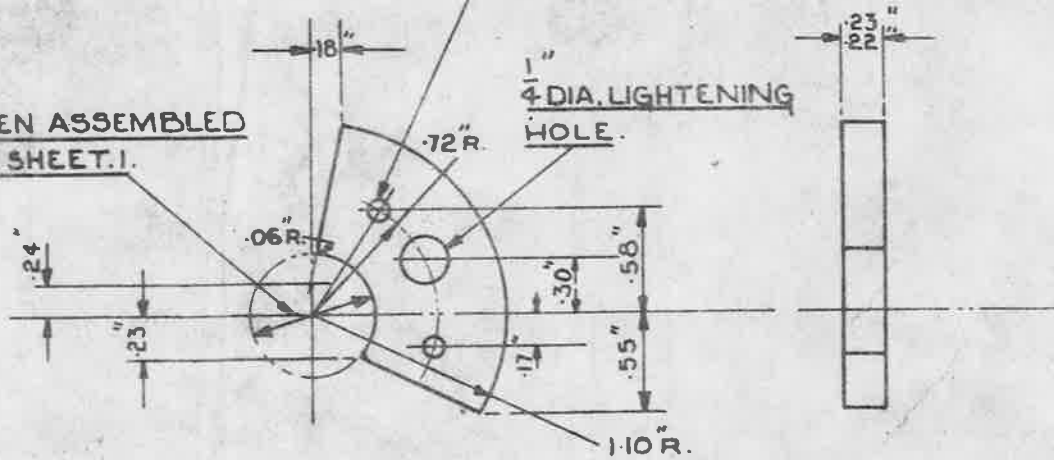
AGS No. 994

SHEET No. 7

NO. OF SHEETS 9

2 HOLES NO. 30 DRILL (.1285)"
WITH A.G.S. 994 - 2 OR 3.

$+0$ "
.66 \pm .01 DIA. WHEN ASSEMBLED
SEE NOTE ON SHEET 1.

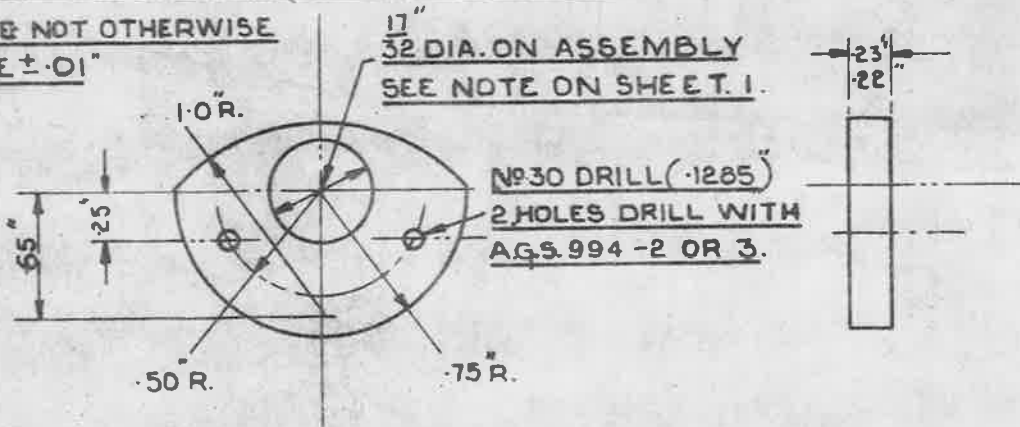


JAW DISTANCE PIECE.

8

LIMITS WHERE NOT OTHERWISE STATED TO BE $\pm .01$ "

17"
32 DIA. ON ASSEMBLY
SEE NOTE ON SHEET 1.



LOWER DISTANCE PIECE.

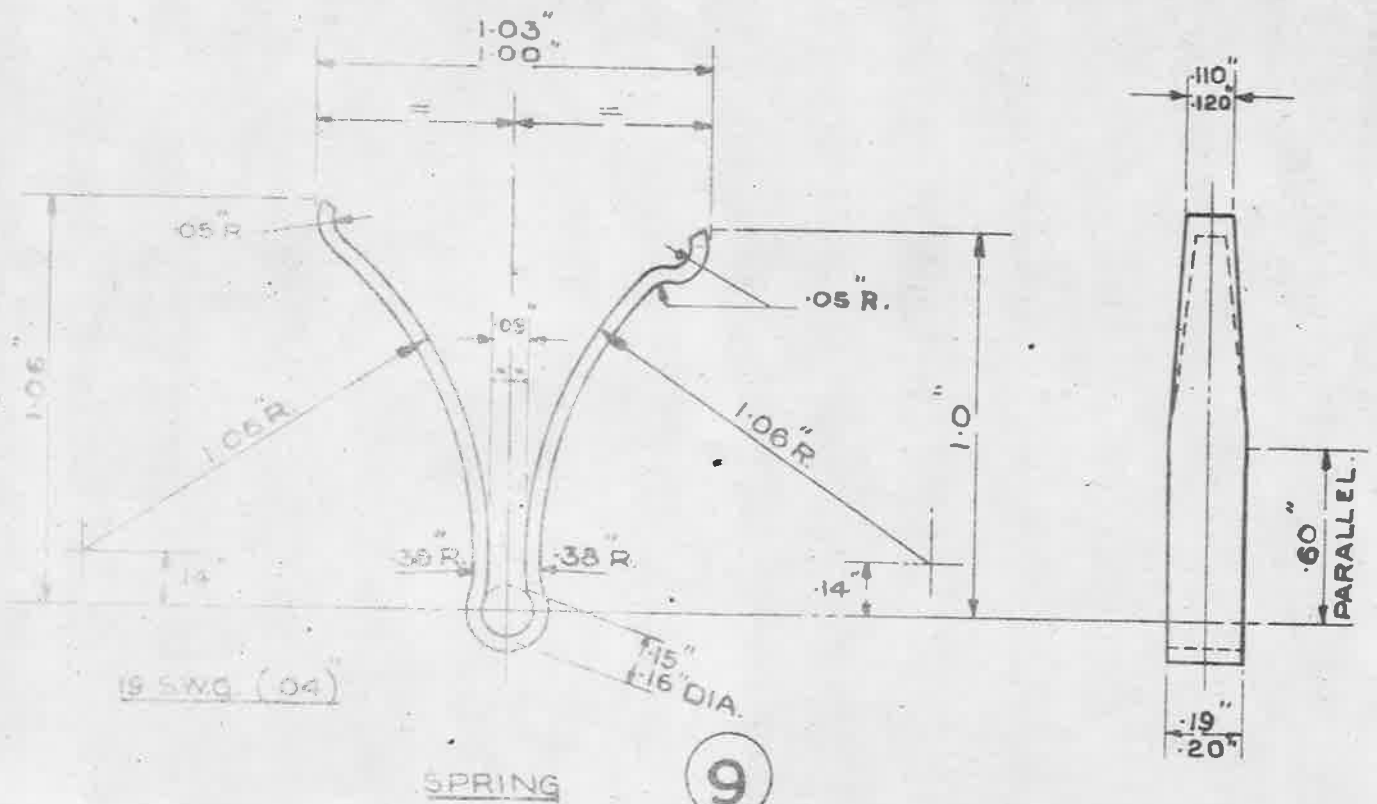
7

SPECIFICATION:- THE MATERIAL TO BE OF STEEL TO BRITISH STANDARD SPECIFICATION S.1. OR S.3. (LATEST ISSUE)

FINISH:-

CADMIUM PLATED TO SPEC D.T.D. 904 (LATEST ISSUE)

ISSUE NO	2													
ALTER ^N NO	AS. NO ACS/419													
ISSUED BY ROYAL AIRCRAFT ESTABLISHMENT.		TITLE:- QUICK RELEASE, AIRCRAFT HOLDING DOWN GEAR.								DRAWN: HGS.		TRACED H. Johnson 5/11/45.		
										CHECKED Spithers.		APPROVED HMA 12/11/45		



19 SWG (.04)

SPRING

9

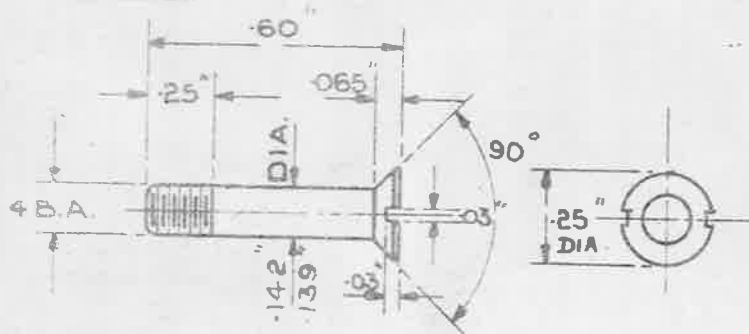
SPECIFICATION:-

MATERIAL TO BE SPRING STEEL TO SPEC: D.T.D. 187. (LATEST ISSUE)

FINISH- CADMIUM PLATED TO SPEC: D.T.D. 904. (LATEST ISSUE)

ALTERNATIVELY PHOSPHATE FOLLOWED BY ENAMEL TO SPEC: D.T.D. 56. (LATEST ISSUE)

LIMITS WHERE NOT OTHERWISE STATED TO BE ± 0.1



SCREW.

10

SPECIFICATION:-

THE MATERIAL TO BE OF STEEL TO BRITISH STANDARD SPECIFICATION. S2. (LATEST ISSUE.)

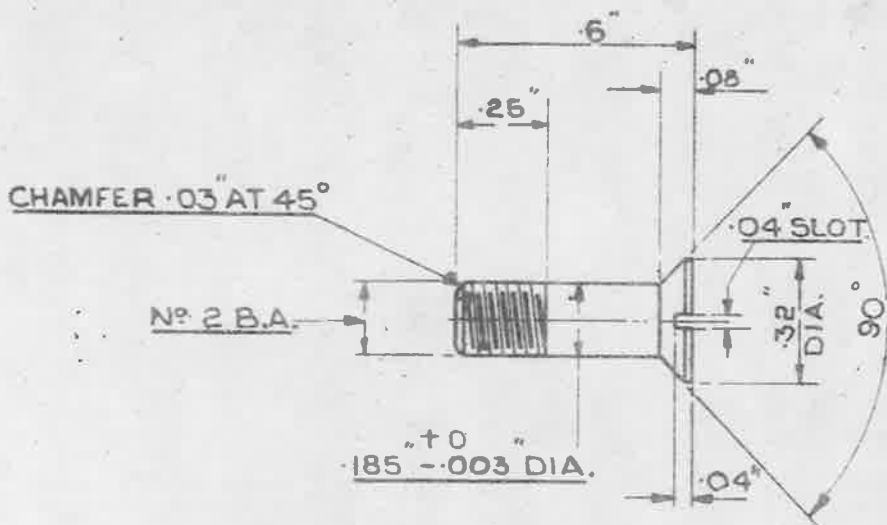
SCREW THREADS:- BRITISH ASSOCIATION (B.A.) TO B.S. SPEC N° 93.

FINISH:

CADMIUM PLATED TO SPEC DTD 904 (LATEST ISSUE)

ISSUE No	2								
ALTER No	AGS/19								
ISSUED BY ROYAL AIRCRAFT ESTABLISHMENT.	TITLE:- QUICK RELEASE. AIRCRAFT HOLDING DOWN GEAR.				DRAWN HGS.		TRACED J.R. Johnson. 30/10/45.		
					CHECKED Shibley.		APPROVED J.P.A. 12/11/45		

LIMITS WHERE NOT OTHERWISE STATED TO BE ± .01"



SCREW.



SPECIFICATION.

THE MATERIAL TO BE OF STEEL TO BRITISH STANDARD SPECIFICATION S.2. (LATEST ISSUE.)

SCREW THREADS:- BRITISH ASSOCIATION (B.A.) TO B.S. SPECN. No. 93.

FINISH:-

CADMIUM PLATED TO SPEC D.T.D. 904 (LATEST ISSUE.)

15-5-46

ISSUE No	2													
ALTER ^N No	A.S. No AGS/A19													
ISSUED BY ROYAL AIRCRAFT ESTABLISHMENT.	TITLE:- QUICK RELEASE, AIRCRAFT HOLDING DOWN GEAR										DRAWN HGS.	TRACED P.E. Johnson 31/10/45.		
											CHECKED Slattery	APPROVED J.M.H. 12/11/45		