

## CONVERSION CHART FOR STANDARD PARTS

<u>Obsolescent</u> <u>Part No.</u>	<u>Replacement</u> <u>Part No.</u>	<u>Obsolescent</u> <u>Part No.</u>	<u>Replacement</u> <u>Part No.</u>
<u>BOLTS</u>		<u>PINS</u>	
A. 1	A. 25	AGS. 784	SP. 9
A. 15Y	A. 25		
A. 15Z	A. 26		
A. 17	A. 61		
A. 28	A. 61		
AS. 1243	AS. 4563		
AS. 1245	AS. 4564	AGS. 244	A. 44
AS. 1247	AS. 4565	AGS. 245	A. 32
AS. 1249	AS. 4566	AGS. 246	A. 43
AS. 1882	AS. 1242	AGS. 247	A. 31
AS. 1883	AS. 1244	AGS. 248	A. 45
AS. 1884	AS. 1246	AGS. 249	A. 33
AS. 1885	AS. 1248	AGS. 564	A. 40
AS. 2504	A. 57	AGS. 896	A. 35
(except /o)		AGS. 967	A. 36
AS. 2969	AS. 3294	AGS. 968	A. 37
AS. 3078	AS. 4597		
AS. 3079	AS. 4598		
AS. 3080	AS. 3294		
AS. 3081	AS. 3295		
AS. 3082	AS. 3296		
AS. 3083	AS. 3297		
<u>NIPPLES</u>		<u>WASHERS</u>	
AGS. 554	SP. 21	AGS. 160	SP. 13
Tecalemit		AGS. 161	SP. 18
6878/1	SP. 21	AGS. 190	SP. 57
		AGS. 191	SP. 58
		AGS. 946	SP. 14
		AGS. 947	SP. 19
		AGS. 970	SP. 15
		AS. 470	SP. 15
		AS. 471	SP. 16
<u>NUTS</u>			
A. 16Y	A. 27		
A. 16Z	A. 24		
AGS. 760	A. 29		
CA.	AGS. 2001		
CP.	AGS. 2001		
CB.	AGS. 2002		
CT.	AGS. 2002		

THE DE HAVILLAND AIRCRAFT COMPANY LTD., HATFIELD, HERTS.

Table with columns: PART NO PREFIX, MATERIAL, SPEC, FINISH, BOLT SIZE, and dimensions (A, B, C, E, G, J, L, N, P, Q, S, U, W) for Standard Hexagon bolts.

Table with columns: PART NO PREFIX, MATERIAL, SPEC, FINISH, and dimensions for Close Tolerance Hexagon bolts.

Table with columns: PART NO PREFIX, MATERIAL, SPEC, FINISH, and dimensions for Special H.T.S. Shear bolts.

Table with columns: PART NO PREFIX, MATERIAL, SPEC, FINISH, and dimensions for Close Tolerance Shear bolts.

Table with columns: PART NO PREFIX, MATERIAL, SPEC, FINISH, and dimensions for Special L.A. Shear bolts.

Table with columns: BOLT SIZE, IDENT CODE, and dimensions for Split Pins.

ALLOWANCE MUST BE MADE FOR MAX THREAD RUN-OUT (2 X P) WHEN CALCULATING PLAIN LENGTH 'L'

Vertical text listing bolt sizes and pitches: 1/8 B.S.F., 3/16 B.S.F., 1/4 B.S.F., 5/16 B.S.F., 3/8 B.S.F., 1/2 B.S.F., 5/8 B.S.F., 3/4 B.S.F., 1 B.S.F., 1 1/4 B.S.F., 1 1/2 B.S.F., 2 B.S.F., 2 1/2 B.S.F., 3 B.S.F., 4 B.S.F., 5 B.S.F., 6 B.S.F., 8 B.S.F., 10 B.S.F., 12 B.S.F., 14 B.S.F., 16 B.S.F., 18 B.S.F., 20 B.S.F., 24 B.S.F., 30 B.S.F., 36 B.S.F., 48 B.S.F., 60 B.S.F., 72 B.S.F., 96 B.S.F., 120 B.S.F., 144 B.S.F., 180 B.S.F., 240 B.S.F., 300 B.S.F., 360 B.S.F., 480 B.S.F., 600 B.S.F., 720 B.S.F., 960 B.S.F., 1200 B.S.F.

NOTE: 1. TO BE USED IN CONJUNCTION WITH D.H.S. 383 OR 983... 2. THE PLAIN LENGTH 'L' SHOULD BE SELECTED TO CONTAIN THE FULL THICKNESS OF THE MATERIAL TO BE HELD... 3. PLAIN LENGTHS 'L' ARE AVAILABLE IN INCREMENTS OF .05... 4. CALL UP AS D.H.S. 901 BELOW.

NOTE: 1. TWO LENGTHS OF THREAD ARE AVAILABLE FOR D.H.S. 901 SHEAR BOLTS... 2. PLAIN LENGTHS 'L' ARE AVAILABLE IN .05 INCH 'M', 'F', 'R', 'D', 'H' TYPES OF BOLT... 3. SEE DATA SHEET III/43A - 'USE OF NUTS'... METHOD OF CALLING UP: A SHEAR BOLT (SHORT THREAD) PLAIN LENGTH 'L' IS 1/4 B.S.F. IS D.H.S. 901/5/2/E... SIMILARLY A SHEAR BOLT (LONG THREAD) WITH PLAIN LENGTH 'L' IS 1/4 B.S.F. IS D.H.S. 901/5/EE

BOLTS-HEXAGON HEAD & SPLIT PINS (ISS. 5)

THE DE HAVILLAND AIRCRAFT COMPANY LTD, HATFIELD, HERTS.

S.B.A.C. "AS" SERIES - BOLTS

Diagram	B LT SIZES					CODE NUMBERS						
	4 BA	2 BA	1/4 B.S.F.	5/16 B.S.F.	3/8 B.S.F.	LENGTH L	4 BA	2 BA	1/4 B.S.F.	5/16 B.S.F.	3/8 B.S.F.	
<p>ROUND HEAD</p>	L	1 to 1/6	1 to 2/1	1 to 2/3	1 to 2/2	1 to 2/1	1B	1C	1E	1G	1J	
	a	.106 .098	.133 .124	.174 .163	.214 .202	.253 .239	2	2B	2C	2E	2G	2J
	b	.268 .252	.350 .332	.472 .452	.591 .567	.708 .681	3	3B	3C	3E	3G	3J
	RECESS No	2	2	3	3	4	4	4B	4C	4E	4G	4J
					4		5	5B	5C	5E	5G	5J
<p>MUSHROOM HEAD</p>	L	1 to 1/6	1 to 2/1	1 to 2/3	1 to 2/2	1 to 2/1	7B	7C	7E	7G	7J	
	a	.087 .077	.119 .109	.150 .140	.214 .200	.240 .225	8	8B	8C	8E	8G	8J
	b	.321 .30	.416 .398	.568 .547	.693 .669	.818 .791	9	9B	9C	9E	9G	9J
	c	.3	.2	.47	.57		10	10B	10C	10E	10G	10J
	RECESS No	2	2	3	4	4	11	11B	11C	11E	11G	11J
<p>90° COUNTERSUNK</p>	L	1 to 1/6	2 to 2/1	2 to 2/3	3 to 2/2	3 to 2/1	12B	12C	12E	12G	12J	
	a	.065 .057	.079 .070	.110 .100	.146 .134	.161 .148	13	13B	13C	13E	13G	13J
	b	.252 .236	.324 .306	.440 .419	.566 .542	.648 .621	14	14B	14C	14E	14G	14J
	c	.33	.37	.42	.47	.57	15	15B	15C	15E	15G	15J
	RECESS No	2	2	3	4	4	16	16B	16C	16E	16G	16J
<p>90° RAISED COUNTERSUNK</p>	L	1 to 1/6	2 to 2/1	2 to 2/3	3 to 2/2	3 to 2/1	17B	17C	17E	17G	17J	
	a	.065 .057	.079 .070	.110 .100	.146 .134	.161 .148	18	18B	18C	18E	18G	18J
	b	.252 .236	.324 .306	.440 .419	.566 .542	.648 .621	19	19B	19C	19E	19G	19J
	c	.33	.37	.42	.47	.57	20	20B	20C	20E	20G	20J
	RECESS No	2	2	3	4	4	21	21B	21C	21E	21G	21J
<p>120° RAISED COUNTERSUNK</p>	L	1 to 1/6	1 to 2/1	2 to 2/3	2 to 2/2	3 to 2/1	22B	22C	22E	22G	22J	
	a	.056 .051	.068 .063	.092 .086	.115 .108	.138 .130	23	23B	23C	23E	23G	23J
	b	.284 .268	.370 .352	.500 .479	.625 .601	.750 .723	24	24B	24C	24E	24G	24J
	c	.33	.37	.42	.47	.57	25	25B	25C	25E	25G	25J
	RECESS No	2	2	3	4	4	26	26B	26C	26E	26G	26J
<p>120° COUNTERSUNK</p>	L	1 to 1/6	1 to 2/1	2 to 2/3	2 to 2/2	3 to 2/1	27B	27C	27E	27G	27J	
	a	.068 .063	.092 .086	.115 .108	.138 .130	.161 .148	28	28B	28C	28E	28G	28J
	b	.370 .352	.500 .479	.625 .601	.750 .723		29	29B	29C	29E	29G	29J
	c	.37	.42	.47	.57		30	30B	30C	30E	30G	30J
	RECESS No	2	2	3	4	4	31	31B	31C	31E	31G	31J

TYPE OF HEAD	PART No
ROUND	A.S. 4597
MUSHROOM	A.S. 4598
90° COUNTERSUNK	A.S. 3294
90° RAISED C'S.K.	A.S. 3295
120° R. 15° D C'S.K.	A.S. 3296
120° COUNTERSUNK	A.S. 3297

**MATERIAL :**  
HIGH TENSILE STEEL  
SPEC : S. 105.  
FINISH : CADMIUM.

METHOD OF CALLING UP.

A HIGH TENSILE STEEL 90° C'S.K "PHILLIPS" RECESS BOLT 5/16 PLAIN LENGTH x 1/4 B.S.F. WILL BE AS.3294/5E.

BOLTS - "PHILLIPS" RECESS HEAD (Iss. 5)

THE DE HAVILLAND AIRCRAFT COMPANY LTD., HATFIELD, HERTS.									
TYPE OF BOLT HEAD	BASIC PART NO OF BOLT								
	H.T. STEEL	STAINLESS STEEL		LIGHT ALLOY					
SPECIFICATION.	S. 96		S. 80		L. 65				
FINISH.	CADMIUM		NATURAL		ANODIC (BLUE)				
90° COUNTERSUNK.	AS.1242	AS.2920		AS.4563					
90° RAISED COUNTERSUNK.	AS.1244	AS.2921		AS.4564					
ROUND.	AS.1246	AS.2922		AS.4565					
MUSHROOM	AS.1248	AS.2923		AS.4566					
BOLT SIZE IDENT: LETTER	4 BA	2 BA	1/4 BSF	5/16 BSF	3/8 BSF	1/2 BSF	5/8 BSF	3/4 BSF	1" BSF
<p>90° COUNTERSUNK</p>	STEEL	5.3	5.3	5.4	5.4	5.4	5.4	5.4	5.4
	L	1.70	1.70	2.70	2.70	2.70	2.70	2.70	3.70
	L.A.	3.7	3.7	3.8	3.8	3.8	3.8	3.8	
	A	1387	1820	2465	3090	3715	4335	4960	
	DIA.	1417	1850	2495	3120	3745	4370	4995	
	B	.25	.32	.44	.55	.66	.76	.88	
	D	.64	.78	1.05	1.29	1.53	1.71	2.00	
	F	.35	.40	.45	.50	.60	.65	.70	
	STEEL	5.3	5.3	5.4	5.4	5.4	5.4	5.4	5.4
	L	1.70	1.70	2.70	2.70	2.70	2.70	3.70	3.70
L.A.	5.3	5.3	5.4	5.4	5.4	5.4	5.4	5.4	
A	1387	1820	2465	3090	3715	4335	4960		
DIA.	1417	1850	2495	3120	3745	4370	4995		
B	.25	.32	.44	.55	.66	.76	.88		
D	.64	.78	1.05	1.29	1.53	1.71	2.00		
F	.35	.40	.45	.50	.60	.65	.70		
<p>ROUND</p>	STEEL	1.053	1.053	1.054					
	L	1/2 T0.1	1/2 T0.1	1/2 T0.1					
	L.A.	1.037	1.037	1.038					
	A	1387	1820	2465					
	DIA.	1417	1850	2495					
	B	.25	.32	.44					
	D	.09	.11	.15					
	F	.35	.40	.45					
	STEEL	1.053	1.053	1.054	1.054				
	L	1/2 T0.1	1/2 T0.1	1/2 T0.1	1/2 T0.1				
L.A.	1.037	1.037	1.038	1.038					
A	1387	1820	2465	3090					
DIA.	1417	1850	2495	3120					
B	.375	.4375	.625	.75					
D	.07	.1	.125	.18					
F	.35	.40	.45	.50					
<p>MUSHROOM</p>	STEEL	1.053	1.053	1.054	1.054				
	L	1/2 T0.1	1/2 T0.1	1/2 T0.1	1/2 T0.1				
	L.A.	1.037	1.037	1.038	1.038				
	A	1387	1820	2465	3090				
	DIA.	1417	1850	2495	3120				
	B	.375	.4375	.625	.75				
	D	.07	.1	.125	.18				
	F	.35	.40	.45	.50				
	STEEL	1.053	1.053	1.054	1.054				
	L	1/2 T0.1	1/2 T0.1	1/2 T0.1	1/2 T0.1				
L.A.	1.037	1.037	1.038	1.038					
A	1387	1820	2465	3090					
DIA.	1417	1850	2495	3120					
B	.375	.4375	.625	.75					
D	.07	.1	.125	.18					
F	.35	.40	.45	.50					

ALLOWANCE MUST BE MADE FOR MAX. THREAD RUN-OUT (2 X P) WHEN CALCULATING P. MAIN LENGTH 'L'.

BOLT SIZE IDENT: LETTER  
 1/2 BSF .125  
 7/16 BSF .111  
 3/8 BSF .10  
 5/16 BSF .091  
 1/4 BSF .077  
 2 BA .064  
 4 BA .052  
 2 X PITCH

**NOTE:** ALL BOLTS ON THE EXTERIOR SURFACE OF UN-PAINTED AIRCRAFT MUST BE CHROME PLATED DHA.369 AND CALLED UP AS FOLLOWS  
 eg. AS.1242/5E DHA.369.

ROUND AND MUSHROOM HEAD BOLTS ARE AVAILABLE WITH ONE ADDITIONAL SHORT LENGTH 'L' OF .05 AND WILL BE CALLED UP AS '1/2'  
 eg. AS.1242 1/2 E.

**NOTE** 1/2 SIZES ARE NOT PERPETUATED THROUGHOUT THE RANGE

**BOLTS - SLOTTED 'AS' SERIES (Iss. 2)**

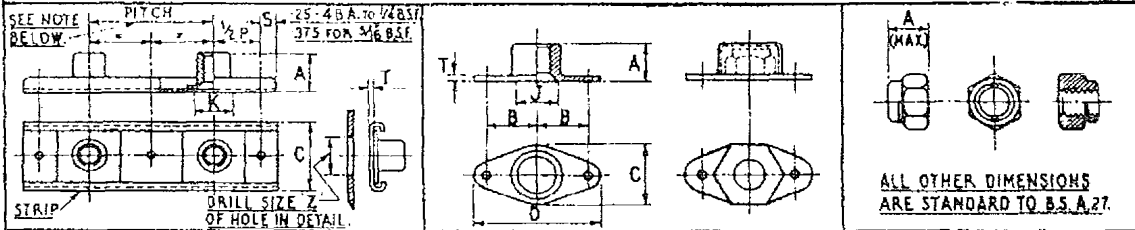
THE DE. HAVILLAND AIRCRAFT COMPANY LTD., HATFIELD, HERTS.

PLAIN LENGTH "L"	SUFFIX CODES FOR LENGTH & DIAMETER													
	BOLT SIZE	6 B.A.	4 B.A.	2 B.A.	1/4 B.S.F.	5/16 B.S.F.	3/8 B.S.F.	7/16 B.S.F.	1/2 B.S.F.	9/16 B.S.F.	5/8 B.S.F.	3/4 B.S.F.	7/8 B.S.F.	1" B.S.F.
.1	1A	1B	1C	1E	1G									
.2	2A	2B	2C	2E	2G	2J	2L	2N	2P	2Q	2S	2U	2W	
.3	3A	3B	3C	3E	3G	3J	3L	3N	3P	3Q	3S	3U	3W	
.4	4A	4B	4C	4E	4G	4J	4L	4N	4P	4Q	4S	4U	4W	
.5	5A	5B	5C	5E	5G	5J	5L	5N	5P	5Q	5S	5U	5W	
.6	6A	6B	6C	6E	6G	6J	6L	6N	6P	6Q	6S	6U	6W	
.7	7A	7B	7C	7E	7G	7J	7L	7N	7P	7Q	7S	7U	7W	
.8	8A	8B	8C	8E	8G	8J	8L	8N	8P	8Q	8S	8U	8W	
.9	9A	9B	9C	9E	9G	9J	9L	9N	9P	9Q	9S	9U	9W	
1.0	10A	10B	10C	10E	10G	10J	10L	10N	10P	10Q	10S	10U	10W	
1.1	11A	11B	11C	11E	11G	11J	11L	11N	11P	11Q	11S	11U	11W	
1.2	12A	12B	12C	12E	12G	12J	12L	12N	12P	12Q	12S	12U	12W	
1.3	13A	13B	13C	13E	13G	13J	13L	13N	13P	13Q	13S	13U	13W	
1.4	14A	14B	14C	14E	14G	14J	14L	14N	14P	14Q	14S	14U	14W	
1.5	15A	15B	15C	15E	15G	15J	15L	15N	15P	15Q	15S	15U	15W	
1.6	16A	16B	16C	16E	16G	16J	16L	16N	16P	16Q	16S	16U	16W	
1.7	17A	17B	17C	17E	17G	17J	17L	17N	17P	17Q	17S	17U	17W	
1.8	18A	18B	18C	18E	18G	18J	18L	18N	18P	18Q	18S	18U	18W	
1.9	19A	19B	19C	19E	19G	19J	19L	19N	19P	19Q	19S	19U	19W	
2.0	20A	20B	20C	20E	20G	20J	20L	20N	20P	20Q	20S	20U	20W	
2.1	21A	21B	21C	21E	21G	21J	21L	21N	21P	21Q	21S	21U	21W	
2.2	22A	22B	22C	22E	22G	22J	22L	22N	22P	22Q	22S	22U	22W	
2.3	23A	23B	23C	23E	23G	23J	23L	23N	23P	23Q	23S	23U	23W	
2.4	24A	24B	24C	24E	24G	24J	24L	24N	24P	24Q	24S	24U	24W	
2.5	25A	25B	25C	25E	25G	25J	25L	25N	25P	25Q	25S	25U	25W	
2.6	26A	26B	26C	26E	26G	26J	26L	26N	26P	26Q	26S	26U	26W	
2.7	27A	27B	27C	27E	27G	27J	27L	27N	27P	27Q	27S	27U	27W	
2.8		28B	28C	28E	28G	28J	28L	28N	28P	28Q	28S	28U	28W	
2.9		29B	29C	29E	29G	29J	29L	29N	29P	29Q	29S	29U	29W	
3.0		30B	30C	30E	30G	30J	30L	30N	30P	30Q	30S	30U	30W	
3.1		31B	31C	31E	31G	31J	31L	31N	31P	31Q	31S	31U	31W	
3.2		32B	32C	32E	32G	32J	32L	32N	32P	32Q	32S	32U	32W	
3.3		33B	33C	33E	33G	33J	33L	33N	33P	33Q	33S	33U	33W	
3.4		34B	34C	34E	34G	34J	34L	34N	34P	34Q	34S	34U	34W	
3.5		35B	35C	35E	35G	35J	35L	35N	35P	35Q	35S	35U	35W	
3.6		36B	36C	36E	36G	36J	36L	36N	36P	36Q	36S	36U	36W	
3.7		37B	37C	37E	37G	37J	37L	37N	37P	37Q	37S	37U	37W	
3.8		38B	38C	38E	38G	38J	38L	38N	38P	38Q	38S	38U	38W	
3.9		39B	39C	39E	39G	39J	39L	39N	39P	39Q	39S	39U	39W	
4.0		40B	40C	40E	40G	40J	40L	40N	40P	40Q	40S	40U	40W	
4.1		41B	41C	41E	41G	41J	41L	41N	41P	41Q	41S	41U	41W	
4.2		42B	42C	42E	42G	42J	42L	42N	42P	42Q	42S	42U	42W	
4.3		43B	43C	43E	43G	43J	43L	43N	43P	43Q	43S	43U	43W	
4.4		44B	44C	44E	44G	44J	44L	44N	44P	44Q	44S	44U	44W	
4.5		45B	45C	45E	45G	45J	45L	45N	45P	45Q	45S	45U	45W	
4.6		46B	46C	46E	46G	46J	46L	46N	46P	46Q	46S	46U	46W	
4.7		47B	47C	47E	47G	47J	47L	47N	47P	47Q	47S	47U	47W	
4.8		48B	48C	48E	48G	48J	48L	48N	48P	48Q	48S	48U	48W	
4.9		49B	49C	49E	49G	49J	49L	49N	49P	49Q	49S	49U	49W	
5.0		50B	50C	50E	50G	50J	50L	50N	50P	50Q	50S	50U	50W	
5.1		51B	51C	51E	51G	51J	51L	51N	51P	51Q	51S	51U	51W	
5.2		52B	52C	52E	52G	52J	52L	52N	52P	52Q	52S	52U	52W	
5.3		53B	53C	53E	53G	53J	53L	53N	53P	53Q	53S	53U	53W	
5.4				54E	54G	54J	54L	54N	54P	54Q	54S	54U	54W	
5.5									55P	55Q	55S	55U	55W	
5.6									56P	56Q	56S	56U	56W	

. STANDARD BOLTS ARE CALLED UP IN PLAIN LENGTH ("L") INCREMENTS OF "1  
 EXAMPLE: A BOLT WITH "5 PLAIN LENGTH WILL BE:-  
 'PART NO FOR BOLT TYPE' / 5 / 'CODE LETTER FOR BOLT DIA.'  
 . CERTAIN D.H.S. BOLTS HOWEVER ARE AVAILABLE IN PLAIN LENGTH ("L") INCREMENTS  
 OF ".05 OR HALF SIZES.  
 EXAMPLE: A BOLT WITH ".55 PLAIN LENGTH WILL BE:-  
 'PART NO FOR BOLT TYPE' / 5 1/2 / 'CODE LETTER FOR BOLT DIA.'

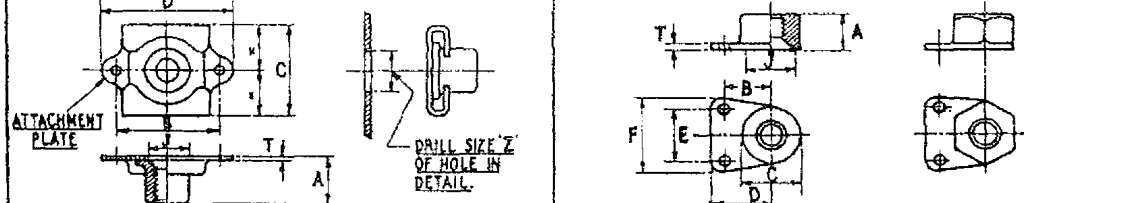
BOLTS - PART NUMBER CODES (Iss.1)

THE DE HAVILLAND AIRCRAFT COMPANY LTD. HATFIELD, HERTS.

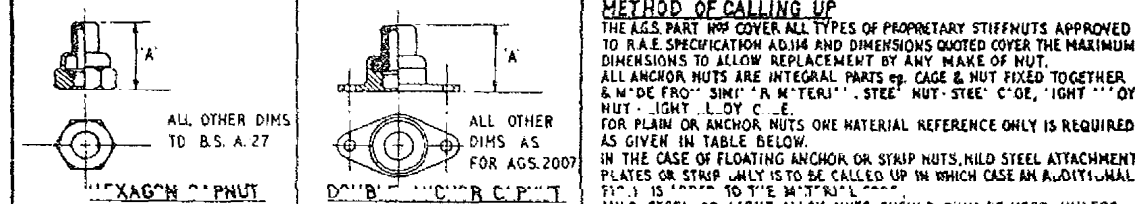


SIZE OF THREAD	STRIP NUTS					COMMON DIMENSIONS					DOUBLE ANCHOR					COMMON DIMENSIONS					HEXAGON		SIZE OF THREAD			
	STANDARD A.G.S. 2015	THIN A.G.S. 2016	COUNTERSUNK A.G.S. 2017	COMMON DIMENSIONS		STANDARD A.G.S. 2007	THIN A.G.S. 2008	COUNTERSUNK A.G.S. 2009	COMMON DIMENSIONS		STANDARD A.G.S. 2001	THIN A.G.S. 2002	COMMON DIMENSIONS		STANDARD A.G.S. 2001	THIN A.G.S. 2002	SIZE OF THREAD									
MARK NO	DIM A	MARK NO	DIM A	MARK NO	DIM A	MARK NO	DIM A	MARK NO	DIM A	MARK NO	DIM A	MARK NO	DIM A	MARK NO	DIM A	MARK NO	DIM A	MARK NO	DIM A							
6 BA						A	241	A	201	A	241	193	25	27	70	056	A	176	A	131	6 BA					
4 BA	B	28	B	235	B	28	172	60	028	NO II	B	284	B	237	B	284	248	35	38	94	065	B	217	B	169	4 BA
2 BA	C	345	C	285	C	345	234	60	028	F	C	35	C	29	C	35	324	35	43	95	065	C	28	C	218	2 BA
1/4 B.S.F.	E	39	E	325	E	39	312	765	028	P	E	402	E	335	E	402	443	50	58	132	072	E	34	E	251	1/4 B.S.F.
5/16 B.S.F.	G	473	G	400	G	473	375	102	036	W	G	473	G	397	G	473	525	55	612	142	072	G	40	G	305	5/16 B.S.F.
3/8 B.S.F.											J	549	J	445	J	549	60	55	70	142	082	J	45	J	161	3/8 B.S.F.
7/16 B.S.F.											L	629	L	504	L	629	704	625	792	165	082	L	555	L	37	7/16 B.S.F.
1/2 B.S.F.											N	721	N	565	N	721	818	70	912	180	082	N	665	N	481	1/2 B.S.F.
5/8 B.S.F.											Q	799	Q	592								Q	799	Q	592	5/8 B.S.F.
3/4 B.S.F.											S	961	S	711								S	961	S	711	3/4 B.S.F.

NOTE: SIZES OF RIVET HOLES IN ANCHOR & STRIPNUTS ARE - 6 BA: 1/16" DIA., 4 BA: TO 1/4" B.S.F.: 3/32" DIA., 2 BA: TO 1/2" B.S.F.: 1/8" DIA.



SIZE OF THREAD	FLOATING ANCHOR					COMMON DIMENSIONS					SINGLE ANCHOR					COMMON DIMENSIONS					SIZE OF THREAD					
	STANDARD A.G.S. 2012	THIN A.G.S. 2013	COUNTERSUNK A.G.S. 2014	COMMON DIMENSIONS		STANDARD A.G.S. 2018	THIN A.G.S. 2019	COUNTERSUNK A.G.S. 2020	COMMON DIMENSIONS		STANDARD A.G.S. 2018	THIN A.G.S. 2019	COUNTERSUNK A.G.S. 2020	COMMON DIMENSIONS		STANDARD A.G.S. 2018	THIN A.G.S. 2019	COUNTERSUNK A.G.S. 2020	COMMON DIMENSIONS							
MARK NO	DIM A	MARK NO	DIM A	MARK NO	DIM A	MARK NO	DIM A	MARK NO	DIM A	MARK NO	DIM A	MARK NO	DIM A	MARK NO	DIM A	MARK NO	DIM A	MARK NO	DIM A	MARK NO	DIM A	MARK NO	DIM A	MARK NO	DIM A	
6 BA	A	23	A	20	A	23	14	50	432	70	036	NO I	A	241	A	201	A	241	193	25	284	35	19	37	056	6 BA
4 BA	B	284	B	24	B	284	167	70	605	95	036	NO II	B	284	B	237	B	284	248	35	38	473	25	49	065	4 BA
2 BA	C	35	C	29	C	35	225	70	605	95	036	F	C	35	C	29	C	35	324	35	43	475	30	54	065	2 BA
1/4 B.S.F.	E	394	E	327	E	394	305	100	776	1315	036	P	E	402	E	335	E	402	443	50	58	66	48	72	072	1/4 B.S.F.
5/16 B.S.F.	G	473	G	39	G	473	360	110	102	142	036	W	G	473	G	397	G	473	525	55	632	71	57	82	072	5/16 B.S.F.
3/8 B.S.F.			J	45	J	490	420	120	115	1562	048	25/64	J	549	J	445	J	549	60	55	708	71	66	91	082	3/8 B.S.F.
7/16 B.S.F.												L	629	L	504	L	629	704	625	818	825	70	105	082	7/16 B.S.F.	
1/2 B.S.F.												N	721	N	565	N	721	818	70	928	90	84	119	082	1/2 B.S.F.	



SIZE OF THREAD	PART No.	DIM. A	SIZE OF THREAD	PART No.	DIM. A
4 BA	AGS.2021/BA	.49	4 BA	AGS.2023/BA	.49
2 BA	AGS.2021/C	.54	2 BA	AGS.2023/C	.54
1/4 B.S.F.	AGS.2021/E	.60	1/4 B.S.F.	AGS.2023/E	.60
5/16 B.S.F.	AGS.2021/G	.65	5/16 B.S.F.	AGS.2023/G	.65
3/8 B.S.F.	AGS.2021/J	.755	3/8 B.S.F.	AGS.2023/J	.755
7/16 B.S.F.	AGS.2021/L	.81	7/16 B.S.F.	AGS.2023/L	.81
1/2 B.S.F.	AGS.2021/N	.86	1/2 B.S.F.	AGS.2023/N	.86

**RESTRICTION IN THE USE OF STIFFNUTS**

1. STIFFNUTS MUST NOT BE USED IN APPLICATIONS SUCH THAT THE LOOSENING OF ONE NUT, SUFFICIENT TO REMOVE ALL TENSION FROM THE BOLT, MIGHT CAUSE - (a) STRUCTURAL COLLAPSE (b) LOSS OF CONTROL (c) FAILURE OF MOTIVE POWER (d) UNINTENTIONAL RELEASE OR INABILITY TO RELEASE ARMAMENT STORE (e) UNINTENTIONAL OPERATION OR INABILITY TO OPERATE UNDER CARRIAGE OR FLAPS.

2. WHERE THERE IS ROTATION THAT WOULD TEND TO LOOSEN THE NUT.

**METHOD OF CALLING UP**

THE A.G.S. PART NOS COVER ALL TYPES OF PROPRIETARY STIFFNUTS APPROVED TO R.A.E. SPECIFICATION AND DIMENSIONS QUOTED COVER THE MAXIMUM DIMENSIONS TO ALLOW REPLACEMENT BY ANY MAKE OF NUT.

ALL ANCHOR NUTS ARE INTEGRAL PARTS OF CAGE & NUT FIXED TOGETHER. S.M. DE FRO. SINK. R.H. TERU. STEE. NUT. STEE. C.O.E. LIGHT. LOY. C.E.

FOR PLAIN OR ANCHOR NUTS ONE MATERIAL REFERENCE ONLY IS REQUIRED AS GIVEN IN TABLE BELOW.

IN THE CASE OF FLOATING ANCHOR OR STRIP NUTS, MILD STEEL ATTACHMENT PLATES OR STRIP ONLY IS TO BE CALLED UP IN WHICH CASE AN ALLOY MATERIAL IS TO BE CALLED UP TO THE MATERIAL.

MILD STEEL OR LIGHT ALLOY NUTS SHOULD ONLY BE USED UNLESS OTHER MATERIALS ARE SPECIALLY REQUIRED. N.B. LIGHT ALLOY IS SUITABLE FOR ANTI-MAGNETIC REQUIREMENTS.

SUFFIX NO	MATERIAL	SPEC OF CAGE	SPEC OF NUT	FINISH
1	MILD STEEL	S.3. OR S.8.4	D.T.O. 650.	CADMIUM
2	NON-CORROSIVE STEEL OR MONEL	S.85 OR D.T.D.K.	S.80	
3	LIGHT ALLOY	D.T.D. 182.	D.T.D. 423 OR 364	ANODIC
4	BRASS	B.S. 409.	B.II, B.243 B.260	ALCATED-TIM

**EXAMPLE:**

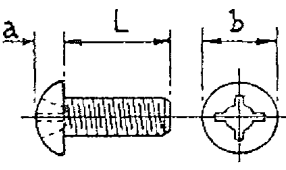
BASIC A.G.S. NO OF STIFFNUT FOR SIZE	MARK NO FOR SIZE	SUFFIX NO FOR MATERIAL OF ATTACHMENT PLATE	SUFFIX NO FOR ONE PIECE OF STRIP OR INTEGRAL NUT & CAGE	PITCH DIMS 6 NO OF PITCHES
STANDARD A.G.S. 2001.	E		1 OR 3	
ANCHOR A.G.S. 2007.	E		1 OR 3	
FLOATING ANCHOR A.G.S. 2012.	E		1 OR 3	
STRIP A.G.S. 2015.	E		1 OR 3	2" PITCH / 25

NOTE: A.G.S. 2015/E/1/2" PITCH/25 WILL INCLUDE THE END 1/2 PITCH \* 2 \* DIM'S \* 2 MAKING TOTAL LENGTH OF 25 \* 2" PITCHES = 52 1/2"

NUTS - A.G.S. STIFF (Iss. 1)

THE DE HAVILLAND AIRCRAFT COMPANY LTD., HATFIELD, HERTS.																																																																																
		HEXAGON DIMS FOR B.S. SPECS. 24, A.27, A.29 & A.14. 33 ALSO DHS 202 & DHS 983.		<table border="1"> <tr> <th>NOMINAL SIZE</th> <th>6 BA</th> <th>4 BA</th> <th>2 BA</th> <th>4BSF</th> <th>16BSF</th> <th>BSF</th> <th>16BSF</th> <th>2BSF</th> <th>16BSF</th> <th>4BSF</th> <th>16BSF</th> <th>4BSF</th> <th>16BSF</th> <th>4BSF</th> <th>16BSF</th> </tr> <tr> <td>A/F</td> <td>180</td> <td>243</td> <td>319</td> <td>438</td> <td>518</td> <td>592</td> <td>702</td> <td>812</td> <td>912</td> <td>1000</td> <td>1190</td> <td>1288</td> <td>1468</td> <td></td> <td></td> </tr> <tr> <td>B</td> <td>193</td> <td>248</td> <td>324</td> <td>445</td> <td>525</td> <td>600</td> <td>710</td> <td>820</td> <td>920</td> <td>1010</td> <td>1200</td> <td>1300</td> <td>1480</td> <td></td> <td></td> </tr> <tr> <td>A/C</td> <td>22</td> <td>29</td> <td>37</td> <td>51</td> <td>61</td> <td>69</td> <td>82</td> <td>95</td> <td>106</td> <td>117</td> <td>139</td> <td>150</td> <td>171</td> <td></td> <td></td> </tr> </table>													NOMINAL SIZE	6 BA	4 BA	2 BA	4BSF	16BSF	BSF	16BSF	2BSF	16BSF	4BSF	16BSF	4BSF	16BSF	4BSF	16BSF	A/F	180	243	319	438	518	592	702	812	912	1000	1190	1288	1468			B	193	248	324	445	525	600	710	820	920	1010	1200	1300	1480			A/C	22	29	37	51	61	69	82	95	106	117	139	150	171		
NOMINAL SIZE	6 BA	4 BA	2 BA	4BSF	16BSF	BSF	16BSF	2BSF	16BSF	4BSF	16BSF	4BSF	16BSF	4BSF	16BSF																																																																	
A/F	180	243	319	438	518	592	702	812	912	1000	1190	1288	1468																																																																			
B	193	248	324	445	525	600	710	820	920	1010	1200	1300	1480																																																																			
A/C	22	29	37	51	61	69	82	95	106	117	139	150	171																																																																			
		A.24/ STAINLESS STEEL S.80 / A.27/ NON-STAINLESS STEEL # SEE CASTLE		<table border="1"> <tr> <th>PART NO. R.H. PART NO. L.H.</th> <th>AP</th> <th>BP</th> <th>CP</th> <th>EP</th> <th>GP</th> <th>JP</th> <th>LP</th> <th>NP</th> <th>PP</th> <th>QP</th> <th>SP</th> <th>UP</th> <th>WP</th> </tr> <tr> <td>DIM 'G'</td> <td>.095</td> <td>.125</td> <td>.157</td> <td>.190</td> <td>.240</td> <td>.302</td> <td>.365</td> <td>.427</td> <td>.490</td> <td>.552</td> <td>.677</td> <td>.740</td> <td>.865</td> </tr> <tr> <td>DIM 'G'</td> <td>.105</td> <td>.135</td> <td>.167</td> <td>.200</td> <td>.250</td> <td>.312</td> <td>.375</td> <td>.437</td> <td>.500</td> <td>.562</td> <td>.687</td> <td>.750</td> <td>.875</td> </tr> </table>													PART NO. R.H. PART NO. L.H.	AP	BP	CP	EP	GP	JP	LP	NP	PP	QP	SP	UP	WP	DIM 'G'	.095	.125	.157	.190	.240	.302	.365	.427	.490	.552	.677	.740	.865	DIM 'G'	.105	.135	.167	.200	.250	.312	.375	.437	.500	.562	.687	.750	.875																						
PART NO. R.H. PART NO. L.H.	AP	BP	CP	EP	GP	JP	LP	NP	PP	QP	SP	UP	WP																																																																			
DIM 'G'	.095	.125	.157	.190	.240	.302	.365	.427	.490	.552	.677	.740	.865																																																																			
DIM 'G'	.105	.135	.167	.200	.250	.312	.375	.437	.500	.562	.687	.750	.875																																																																			
		A.4/ STAINLESS STEEL S.80 / A.2/ NON-STAINLESS STEEL # SEE CASTLE		<table border="1"> <tr> <th>PART NO. R.H. PART NO. L.H.</th> <th>A</th> <th>B</th> <th>C</th> <th>E</th> <th>G</th> <th>J</th> <th>L</th> <th>N</th> <th>P</th> <th>QT</th> <th>S</th> <th>U</th> <th>WT</th> </tr> <tr> <td>DIM 'G'</td> <td>.075</td> <td>.084</td> <td>.113</td> <td>.125</td> <td>.156</td> <td>.198</td> <td>.240</td> <td>.281</td> <td>.323</td> <td>.365</td> <td>.448</td> <td>.490</td> <td>.573</td> </tr> <tr> <td>DIM 'G'</td> <td>.093</td> <td>.094</td> <td>.123</td> <td>.133</td> <td>.166</td> <td>.208</td> <td>.250</td> <td>.291</td> <td>.333</td> <td>.375</td> <td>.458</td> <td>.500</td> <td>.583</td> </tr> </table>													PART NO. R.H. PART NO. L.H.	A	B	C	E	G	J	L	N	P	QT	S	U	WT	DIM 'G'	.075	.084	.113	.125	.156	.198	.240	.281	.323	.365	.448	.490	.573	DIM 'G'	.093	.094	.123	.133	.166	.208	.250	.291	.333	.375	.458	.500	.583																						
PART NO. R.H. PART NO. L.H.	A	B	C	E	G	J	L	N	P	QT	S	U	WT																																																																			
DIM 'G'	.075	.084	.113	.125	.156	.198	.240	.281	.323	.365	.448	.490	.573																																																																			
DIM 'G'	.093	.094	.123	.133	.166	.208	.250	.291	.333	.375	.458	.500	.583																																																																			
		A.24/ STAINLESS STEEL S.80 / A.27/ NON-STAINLESS STEEL # SEE CASTLE		<table border="1"> <tr> <th>PART NO. R.H. PART NO. L.H.</th> <th>A</th> <th>B</th> <th>C</th> <th>E</th> <th>G</th> <th>J</th> <th>L</th> <th>N</th> <th>P</th> <th>Q</th> <th>S</th> <th>U</th> <th>WT</th> </tr> <tr> <td>DIM 'G'</td> <td>.090</td> <td>.090</td> <td>.090</td> <td>.090</td> <td>.140</td> <td>.140</td> <td>.187</td> <td>.187</td> <td>.231</td> <td>.231</td> <td>.280</td> <td>.280</td> <td>.350</td> </tr> <tr> <td>DIM 'K'</td> <td>.090</td> <td>.090</td> <td>.090</td> <td>.090</td> <td>.140</td> <td>.140</td> <td>.187</td> <td>.187</td> <td>.231</td> <td>.231</td> <td>.280</td> <td>.280</td> <td>.350</td> </tr> </table>													PART NO. R.H. PART NO. L.H.	A	B	C	E	G	J	L	N	P	Q	S	U	WT	DIM 'G'	.090	.090	.090	.090	.140	.140	.187	.187	.231	.231	.280	.280	.350	DIM 'K'	.090	.090	.090	.090	.140	.140	.187	.187	.231	.231	.280	.280	.350																						
PART NO. R.H. PART NO. L.H.	A	B	C	E	G	J	L	N	P	Q	S	U	WT																																																																			
DIM 'G'	.090	.090	.090	.090	.140	.140	.187	.187	.231	.231	.280	.280	.350																																																																			
DIM 'K'	.090	.090	.090	.090	.140	.140	.187	.187	.231	.231	.280	.280	.350																																																																			
		A.24/ STAINLESS STEEL S.80 / A.27/ NON-STAINLESS STEEL # SEE CASTLE		<table border="1"> <tr> <th>PART NO. R.H. PART NO. L.H.</th> <th>EC</th> <th>GC</th> <th>JC</th> <th>LC</th> <th>NC</th> <th>PC</th> <th>QC</th> <th>SC</th> <th>UC</th> <th>WC</th> </tr> <tr> <td>DIM 'M'</td> <td>.280</td> <td>.330</td> <td>.392</td> <td>.505</td> <td>.567</td> <td>.677</td> <td>.739</td> <td>.911</td> <td>.974</td> <td>1.145</td> </tr> <tr> <td>DIM 'G'</td> <td>.290</td> <td>.340</td> <td>.402</td> <td>.515</td> <td>.577</td> <td>.687</td> <td>.749</td> <td>.921</td> <td>.984</td> <td>1.155</td> </tr> </table>													PART NO. R.H. PART NO. L.H.	EC	GC	JC	LC	NC	PC	QC	SC	UC	WC	DIM 'M'	.280	.330	.392	.505	.567	.677	.739	.911	.974	1.145	DIM 'G'	.290	.340	.402	.515	.577	.687	.749	.921	.984	1.155																															
PART NO. R.H. PART NO. L.H.	EC	GC	JC	LC	NC	PC	QC	SC	UC	WC																																																																						
DIM 'M'	.280	.330	.392	.505	.567	.677	.739	.911	.974	1.145																																																																						
DIM 'G'	.290	.340	.402	.515	.577	.687	.749	.921	.984	1.155																																																																						
		A.27/ LIGHT ALLOY L.65 / FINISH - ANODIC		<table border="1"> <tr> <th>PART NO. R.H. PART NO. L.H.</th> <th>BP</th> <th>CP</th> <th>EP</th> <th>GP</th> <th>JP</th> <th>LP</th> <th>NP</th> <th>PP</th> <th>QP</th> </tr> <tr> <td>DIM 'G'</td> <td>.125</td> <td>.157</td> <td>.190</td> <td>.240</td> <td>.302</td> <td>.365</td> <td>.427</td> <td>.490</td> <td>.552</td> </tr> <tr> <td>DIM 'G'</td> <td>.135</td> <td>.167</td> <td>.200</td> <td>.250</td> <td>.312</td> <td>.375</td> <td>.437</td> <td>.500</td> <td>.562</td> </tr> </table>													PART NO. R.H. PART NO. L.H.	BP	CP	EP	GP	JP	LP	NP	PP	QP	DIM 'G'	.125	.157	.190	.240	.302	.365	.427	.490	.552	DIM 'G'	.135	.167	.200	.250	.312	.375	.437	.500	.562																																		
PART NO. R.H. PART NO. L.H.	BP	CP	EP	GP	JP	LP	NP	PP	QP																																																																							
DIM 'G'	.125	.157	.190	.240	.302	.365	.427	.490	.552																																																																							
DIM 'G'	.135	.167	.200	.250	.312	.375	.437	.500	.562																																																																							
		A.29/ LIGHT ALLOY L.65 / FINISH - ANODIC		<table border="1"> <tr> <th>PART NO. R.H. PART NO. L.H.</th> <th>EP</th> <th>GP</th> <th>J</th> <th>LS</th> <th>N</th> <th>Q</th> </tr> <tr> <td>DIM 'G'</td> <td>.250</td> <td>.270</td> <td>.302</td> <td>.365</td> <td>.427</td> <td>.490</td> </tr> <tr> <td>DIM 'G'</td> <td>.260</td> <td>.280</td> <td>.312</td> <td>.375</td> <td>.437</td> <td>.500</td> </tr> </table>													PART NO. R.H. PART NO. L.H.	EP	GP	J	LS	N	Q	DIM 'G'	.250	.270	.302	.365	.427	.490	DIM 'G'	.260	.280	.312	.375	.437	.500																																											
PART NO. R.H. PART NO. L.H.	EP	GP	J	LS	N	Q																																																																										
DIM 'G'	.250	.270	.302	.365	.427	.490																																																																										
DIM 'G'	.260	.280	.312	.375	.437	.500																																																																										
		D.H.S. 202/ LIGHT ALLOY DTD 423 / FINISH - BLACK ANODISE		<table border="1"> <tr> <th>PART NO. R.H. PART NO. L.H.</th> <th>C</th> <th>E</th> <th>G</th> <th>J</th> <th>L</th> <th>N</th> <th>Q</th> <th>'OBSCOLESCENT'</th> </tr> <tr> <td>DIM 'G'</td> <td>.113</td> <td>.125</td> <td>.17</td> <td>.198</td> <td>.24</td> <td>.281</td> <td>.365</td> <td>USE DHS 983 &amp; 383</td> </tr> <tr> <td>DIM 'G'</td> <td>.123</td> <td>.133</td> <td>.180</td> <td>.208</td> <td>.250</td> <td>.291</td> <td>.375</td> <td>SEE SHEET III/43A</td> </tr> </table>													PART NO. R.H. PART NO. L.H.	C	E	G	J	L	N	Q	'OBSCOLESCENT'	DIM 'G'	.113	.125	.17	.198	.24	.281	.365	USE DHS 983 & 383	DIM 'G'	.123	.133	.180	.208	.250	.291	.375	SEE SHEET III/43A																																					
PART NO. R.H. PART NO. L.H.	C	E	G	J	L	N	Q	'OBSCOLESCENT'																																																																								
DIM 'G'	.113	.125	.17	.198	.24	.281	.365	USE DHS 983 & 383																																																																								
DIM 'G'	.123	.133	.180	.208	.250	.291	.375	SEE SHEET III/43A																																																																								
		D.H.S. 383/ LIGHT ALLOY DTD 423 / FINISH - ANODIC		<table border="1"> <tr> <th>PART NO. R.H. PART NO. L.H.</th> <th>CT</th> <th>ET</th> <th>G</th> <th>J</th> <th>N</th> </tr> <tr> <td>DIM 'G'</td> <td>.321</td> <td>.440</td> <td>.440</td> <td>.520</td> <td>.705</td> </tr> <tr> <td>DIM 'G'</td> <td>.324</td> <td>.445</td> <td>.445</td> <td>.525</td> <td>.719</td> </tr> </table> <p>NOTE: DHS 383/G, J &amp; N HAVE REDUCED SIZE HEXAGON SEE DATA SHEET III/43A.</p>													PART NO. R.H. PART NO. L.H.	CT	ET	G	J	N	DIM 'G'	.321	.440	.440	.520	.705	DIM 'G'	.324	.445	.445	.525	.719																																														
PART NO. R.H. PART NO. L.H.	CT	ET	G	J	N																																																																											
DIM 'G'	.321	.440	.440	.520	.705																																																																											
DIM 'G'	.324	.445	.445	.525	.719																																																																											
		D.H.S. 983/ D.H.S. 984/ LIGHT ALLOY STEEL L.65 S.113 / N OIC GREEN CADMIUM		<table border="1"> <tr> <th>PART NO. R.H. PART NO. L.H.</th> <th>E</th> <th>G</th> <th>J</th> </tr> <tr> <td>DIM 'G'</td> <td>.20</td> <td>.20</td> <td>.24</td> </tr> <tr> <td>DIA 'D'</td> <td>.71</td> <td>.21</td> <td>.25</td> </tr> </table>													PART NO. R.H. PART NO. L.H.	E	G	J	DIM 'G'	.20	.20	.24	DIA 'D'	.71	.21	.25																																																				
PART NO. R.H. PART NO. L.H.	E	G	J																																																																													
DIM 'G'	.20	.20	.24																																																																													
DIA 'D'	.71	.21	.25																																																																													
		A.53/ BRASS - COMM. / FINISH - TINNED		<table border="1"> <tr> <th>PART NO. R.H. PART NO. L.H.</th> <th>A</th> <th>B</th> <th>C</th> </tr> <tr> <td>DIM 'G'</td> <td>.095</td> <td>.125</td> <td>.157</td> </tr> <tr> <td>DIM 'G'</td> <td>.105</td> <td>.135</td> <td>.167</td> </tr> </table> <p>NOTE: SEE SPECIFICATION FOR THE FOLLOWING 12 S-12 BA, 10 BA, B BA.</p>													PART NO. R.H. PART NO. L.H.	A	B	C	DIM 'G'	.095	.125	.157	DIM 'G'	.105	.135	.167																																																				
PART NO. R.H. PART NO. L.H.	A	B	C																																																																													
DIM 'G'	.095	.125	.157																																																																													
DIM 'G'	.105	.135	.167																																																																													
		A.14/ BRASS - B.249 / FINISH - TINNED		<table border="1"> <tr> <th>PART NO. R.H. PART NO. L.H.</th> <th>EB</th> <th>J</th> <th>N</th> <th>Q</th> <th>SB</th> <th>U</th> <th>WB</th> </tr> <tr> <td>DIM 'G'</td> <td>12</td> <td>14</td> <td>15</td> <td>17</td> <td>19</td> <td>19</td> <td>20</td> </tr> <tr> <td>DIM 'G'</td> <td>13</td> <td>15</td> <td>16</td> <td>18</td> <td>20</td> <td>20</td> <td>21</td> </tr> </table>													PART NO. R.H. PART NO. L.H.	EB	J	N	Q	SB	U	WB	DIM 'G'	12	14	15	17	19	19	20	DIM 'G'	13	15	16	18	20	20	21																																								
PART NO. R.H. PART NO. L.H.	EB	J	N	Q	SB	U	WB																																																																									
DIM 'G'	12	14	15	17	19	19	20																																																																									
DIM 'G'	13	15	16	18	20	20	21																																																																									
		MATERIAL: FINISH: SPEC: B.33210 CADMIUM PLATED		<table border="1"> <tr> <th>NOMINAL SIZE</th> <th>6 BA</th> <th>4 BA</th> <th>2 BA</th> <th>4BSF</th> <th>16BSF</th> <th>BSF</th> <th>16BSF</th> <th>2BSF</th> <th>16BSF</th> <th>4BSF</th> <th>16BSF</th> <th>4BSF</th> <th>16BSF</th> </tr> <tr> <td>AGS</td> <td>25</td> <td>25</td> <td>312</td> <td>375</td> <td>437</td> <td>50</td> <td>562</td> <td>625</td> <td></td> <td></td> <td></td> <td></td> <td></td> </tr> <tr> <td>AGS</td> <td>25</td> <td>25</td> <td>312</td> <td>375</td> <td>437</td> <td>50</td> <td>562</td> <td>625</td> <td></td> <td></td> <td></td> <td></td> <td></td> </tr> </table>													NOMINAL SIZE	6 BA	4 BA	2 BA	4BSF	16BSF	BSF	16BSF	2BSF	16BSF	4BSF	16BSF	4BSF	16BSF	AGS	25	25	312	375	437	50	562	625						AGS	25	25	312	375	437	50	562	625																											
NOMINAL SIZE	6 BA	4 BA	2 BA	4BSF	16BSF	BSF	16BSF	2BSF	16BSF	4BSF	16BSF	4BSF	16BSF																																																																			
AGS	25	25	312	375	437	50	562	625																																																																								
AGS	25	25	312	375	437	50	562	625																																																																								
		A.57/ HTS. THIN (HEX DIMS AS FOR SLOTTED)		<table border="1"> <tr> <th>NOMINAL SIZE</th> <th>ES</th> <th>GS</th> <th>JS</th> <th>LS</th> <th>NS</th> </tr> <tr> <td>HTS. S.90</td> <td>458</td> <td>458</td> <td>510</td> <td>592</td> <td>702</td> </tr> <tr> <td>HTS. S.90</td> <td>443</td> <td>443</td> <td>525</td> <td>600</td> <td>710</td> </tr> </table>													NOMINAL SIZE	ES	GS	JS	LS	NS	HTS. S.90	458	458	510	592	702	HTS. S.90	443	443	525	600	710																																														
NOMINAL SIZE	ES	GS	JS	LS	NS																																																																											
HTS. S.90	458	458	510	592	702																																																																											
HTS. S.90	443	443	525	600	710																																																																											
		A.58/ HTS. THIN SLOTTED		<table border="1"> <tr> <th>NOMINAL SIZE</th> <th>GT</th> <th>JT</th> <th>LT</th> <th>NT</th> </tr> <tr> <td>HTS. THIN</td> <td>16</td> <td>16</td> <td>16</td> <td>16</td> </tr> <tr> <td>HTS. THIN</td> <td>20</td> <td>20</td> <td>20</td> <td>20</td> </tr> </table>													NOMINAL SIZE	GT	JT	LT	NT	HTS. THIN	16	16	16	16	HTS. THIN	20	20	20	20																																																	
NOMINAL SIZE	GT	JT	LT	NT																																																																												
HTS. THIN	16	16	16	16																																																																												
HTS. THIN	20	20	20	20																																																																												

NUTS-MISCELLANEOUS (Iss.4)

THE DE HAVILLAND AIRCRAFT COMPANY LTD, HATFIELD, HERTS.																											
S. B.A.C. "A.S." SERIES — SCREWS																											
 ROUND HEAD	SCREW SIZES						LENGTH	PART NUMBERS																			
		6BA	4BA	2BA	1/4BSF	1/8BSF	1/16BSF	"L"	6BA	4BA	2BA	1/4BSF	1/8BSF	1/16BSF													
L	.370 1.0	.370 1.0	.370 1.0	.470 1.0	.570 1.0	.570 1.0	.3	3A	3B	3C																	
a	.085 .077	.106 .098	.133 .124	.174 .163	.214 .202	.253 .239	.4	4A	4B	4C																	
b	.208 .193	.268 .252	.30 .332	.472 .451	.91 .567	.70 .681	.5	5A	5B	5C	5E	5G	5J														
RECESS No	1	2	2	3	3	4	.6	6A	6B	6C	6E	6G	6J														
L		.70 1.0	.70 1.0	.70 1.0	.70 1.0	.70 1.0	.7	7A	7B	7C	7E	7G	7J														
a		.087 .077	.119 .109	.150 .140	.214 .200	.240 .225	.8	8A	8B	8C	8E	8G	8J														
b		.321 .305	.416 .398	.568 .547	.693 .669	.818 .791	.9	9A	9B	9C	9E	9G	9J														
RECESS No		2	2	3	4	4	1.0	10A	10B	10C	10E	10G	10J														
L	.30 1.0	.30 1.0	.30 1.0	.4 1.0	.5 1.0	.5 1.0		<table border="1"> <thead> <tr> <th>TY. OF HEAD</th> <th>PAR. No</th> </tr> </thead> <tbody> <tr> <td>ROUND HEAD</td> <td>A.S. 2991</td> </tr> <tr> <td>MUSHROOM</td> <td>A.S. 2992</td> </tr> <tr> <td>90° COUNTERSUNK</td> <td>A.S. 2993</td> </tr> <tr> <td>90° RAISED C'SK</td> <td>A.S. 2994</td> </tr> <tr> <td>120° RAISED C'SK</td> <td>A.S. 2995</td> </tr> <tr> <td>120° COUNTERSUNK</td> <td>A.S. 2996</td> </tr> </tbody> </table>						TY. OF HEAD	PAR. No	ROUND HEAD	A.S. 2991	MUSHROOM	A.S. 2992	90° COUNTERSUNK	A.S. 2993	90° RAISED C'SK	A.S. 2994	120° RAISED C'SK	A.S. 2995	120° COUNTERSUNK	A.S. 2996
TY. OF HEAD	PAR. No																										
ROUND HEAD	A.S. 2991																										
MUSHROOM	A.S. 2992																										
90° COUNTERSUNK	A.S. 2993																										
90° RAISED C'SK	A.S. 2994																										
120° RAISED C'SK	A.S. 2995																										
120° COUNTERSUNK	A.S. 2996																										
a	.052 .045	.05 .057	.079 .070	.110 .100	.146 .134	.161 .148																					
b	.194 .17	.252 .36	.324 .36	.440 .419	.566 .542	.648 .621																					
RECESS No	1	2	2	3	4	4																					
L	.30 1.0	.30 1.0	.30 1.0	.4 1.0	.5 1.0	.5 1.0		METHOD OF CALLING UP. A 90° C'SK SCREW "5 LONG x 2 B.A. WILL BE :- A.S.2993 / 5 / C																			
a	.052 .045	.065 .057	.079 .070	.110 .100	.146 .134	.161 .148																					
b	.194 .179	.252 .236	.324 .306	.440 .419	.566 .542	.648 .621																					
H	.023	.030	.038	.051	.068	.072																					
RECESS No	1	2	2	3	4	4		<table border="1"> <tr> <td>BASIC AWING NUMBER</td> <td>OVERALL LENGTH "L" IN TENTHS OF AN INCH</td> <td>SYMBOL F... SHANK DIA</td> </tr> </table>						BASIC AWING NUMBER	OVERALL LENGTH "L" IN TENTHS OF AN INCH	SYMBOL F... SHANK DIA											
BASIC AWING NUMBER	OVERALL LENGTH "L" IN TENTHS OF AN INCH	SYMBOL F... SHANK DIA																									
L		.40 1.0	.40 1.0	.5 1.0	.6 1.0	.6 1.0		<table border="1"> <tr> <td>BASIC AWING NUMBER</td> <td>OVERALL LENGTH "L" IN TENTHS OF AN INCH</td> <td>SYMBOL F... SHANK DIA</td> </tr> </table>						BASIC AWING NUMBER	OVERALL LENGTH "L" IN TENTHS OF AN INCH	SYMBOL F... SHANK DIA											
BASIC AWING NUMBER	OVERALL LENGTH "L" IN TENTHS OF AN INCH	SYMBOL F... SHANK DIA																									
a		.056 .051	.068 .063	.092 .086	.115 .108	.138 .130																					
b		.284 .268	.370 .352	.500 .479	.625 .601	.750 .723																					
H		.031	.033	.047	.053	.070																					
RECESS No		2	2	3	4	4																					
L			.40 1.0	.50 1.0	.60 1.0			<table border="1"> <tr> <td>BASIC AWING NUMBER</td> <td>OVERALL LENGTH "L" IN TENTHS OF AN INCH</td> <td>SYMBOL F... SHANK DIA</td> </tr> </table>						BASIC AWING NUMBER	OVERALL LENGTH "L" IN TENTHS OF AN INCH	SYMBOL F... SHANK DIA											
BASIC AWING NUMBER	OVERALL LENGTH "L" IN TENTHS OF AN INCH	SYMBOL F... SHANK DIA																									
a			.068 .063	.092 .086	.115 .108																						
b			.370 .352	.500 .479	.625 .601																						
RECESS No			2	3	4																						

NOTES:-

THESE SCREWS ARE AIRCRAFT QUALITY BUT MADE FROM COMMERCIAL STEEL OF 25 TONS U.T.S. AND MUST NOT BE USED WHERE IN THE EVENT OF FAILURE THE SAFETY OF THE AIRCRAFT WOULD BE AFFECTED.

SCREWS "PHILLIPS" RECESS HEAD (Iss. 3)



THE DE HAVILLAND AIRCRAFT COMPANY LTD, HATFIELD, HERTS.

LOW TENSILE SCREWS — BASIC PART NUMBERS					PART NO LENGTH & DIA.			
COMM. QUALITY MATL	MILD STEEL	STAINLESS	ALUMALLOY	BRASS	LENGTH "L"	2 B.A.	4 B.A.	6 B.A.
MIN. TENSILE STRENGTH	25 TONS	35	20	20				
FINISH	CADMIUM	—	ANODIC	TINNED	1/8"			A 4
CHEESE HEAD	A 31	A 35	A 39	A 43	3/16"	C 6	B 6	A 6
ROUND HEAD	A 32	A 36	A 40	A 44	1/4"	C 8	B 8	A 8
90° C'SK HEAD	A 33	A 37	A 41	A 45	5/16"	C 10	B 10	A 10
90° RAISED C'SK	A 34	A 38	A 42	A 46	3/8"	C 12	B 12	A 12
SIZE					2 B.A.	4 B.A.	6 B.A.	
	DIA.	.319	.252	.194	7/16"	C 14	B 14	A 14
	"A"	.309	.242	.184	1/2"	C 16	B 16	A 16
	"B"	.130	.101	.078	9/16"			A 18
	"C"	.123	.095	.073	5/8"	C 20	B 20	A 20
	"C1"	.50	.040	.030	3/4"	C 24	B 24	A 24
	DIA.	.319	.252	.194	7/8"	C 28	B 28	A 28
	"A"	.309	.242	.184	1"	C 32	B 32	A 32
	"B"	.130	.101	.078	1 1/8"	C 36	B 36	A 36
	"C"	.123	.095	.073	1 1/4"	C 40	B 40	A 40
	"C1"	.090	.070	.050	1 3/8"	C 44	B 44	A 44
	DIA.	.319	.252	.194	1 1/2"	C 48	B 48	A 48
	"A"	.309	.242	.184	PLAIN LENGTH "C" & "C1"			
	"B"	.077	.065	.051	ROUND AND CHEESE HEAD			
	DIA.	.319	.252	.194	"CREWS ABOVE" THROUGH "AVY"			
	"A"	.309	.242	.184	LINE HAVE PLAIN LENGTH "C"			
	"B"	.077	.065	.051	AND THOSE BELOW "C1."			
	"E"	.010	.010	.009				
	"M"	.036	.029	.023				

NOTES

1. THESE SCREWS ARE AIRCRAFT QUALITY BUT MANUFACTURED FROM COMMERCIAL MATERIAL.
2. THE ABOVE RANGE OF SCREWS INCLUDE B, 10 & 12 B.A. SIZES AND INFORMATION MAY BE OBTAINED BY REFERRING TO THE RELEVANT SPECIFICATION.

METHOD OF CALLING UP

A ROUND HEAD MILD STEEL SCREW 2 B.A. X 3/4" LONG IS :- A.32.C.24.

PART NUMBER	COMMERCIAL MATERIAL	FINISH
A.55	MILD STEEL	CADMIUM
A.56	STAINLESS	—

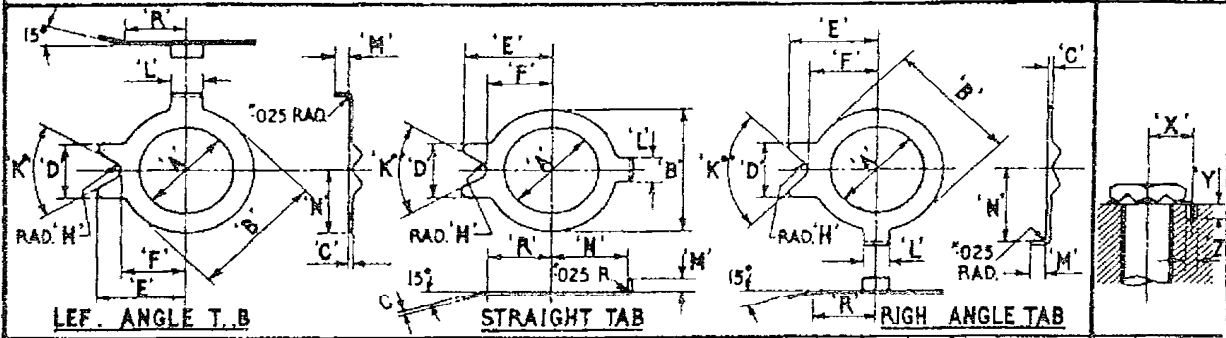
DIA. SIZE	DIA. "D"	WIDTH OF SLOT "A"		DEPTH OF SLOT "B"		PART NUMBERS - LENGTH "L" $\begin{matrix} -0 \\ +0.30 \end{matrix}$								
		MIN.	MAX.	MIN.	MAX.	3/16"	1/4"	5/16"	3/8"	1/2"	5/8"	3/4"	7/8"	
6 B.A.	.110	.025	.031	.030	.050	A 3	A 4	A 5	A 6	A 8				
4 B.A.	.142	.029	.035	.040	.065		B 4	B 5	B 6	B 8	B 10			
2 B.A.	.185	.037	.043	.050	.080			C 5	C 6	C 8	C 10	C 12		
1/4" B.S.F.	.25	.054	.060	.070	.100				E 6	E 8	E 10	E 12	E 14	

METHOD OF CALLING UP

A MILD STEEL GRUB SCREW 4 B.A. X 1/2" LONG IS A.55. B8.

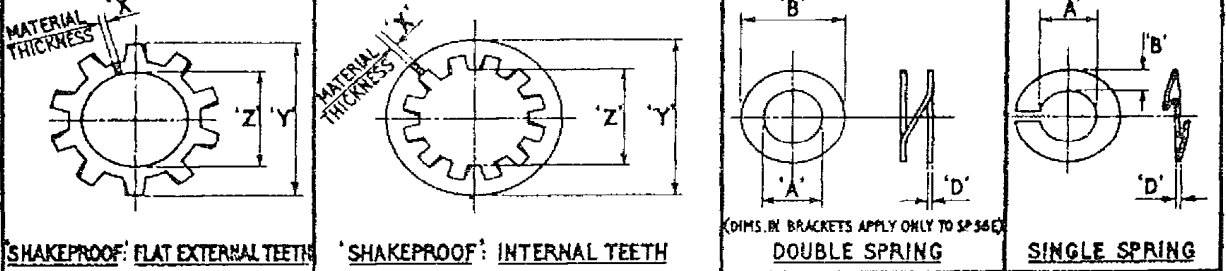
SCREWS - SLOTTED & GRUB (Iss. 1)

**THE DE HAVILLAND AIRCRAFT COMPANY LTD., HATFIELD, HERTS.**

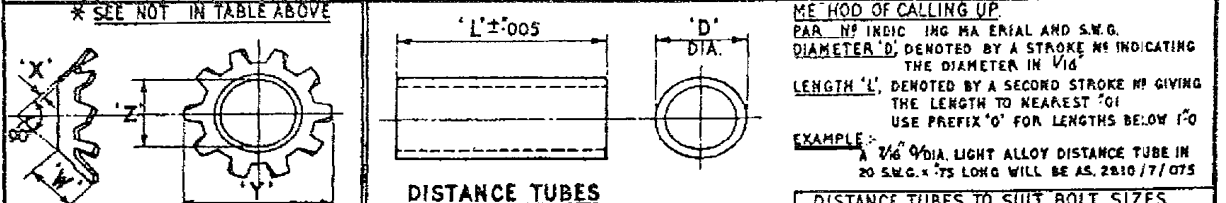


TO SUIT BOLT SIZE	STRAIGHT TAB		RIGHT ANGLE TAB		LEFT ANGLE TAB		MILD STEEL S.W.G.	STAIN-LESS S.W.G.	DEVEL. OPENED LENGTH	RAD.	'H'	'K'	'L'	'M'	'N'	'R'	CENTRES			DRILL DIA.		
	PART NO.	DIA.	PART NO.	DIA.	PART NO.	DIA.											'A'	'B'	'C'		'X'	'Y'
2 B.A.	SP41 G	SP42 C	SP43 C	SP44 C	SP45 C	SP46 C	.195	.330	22	24	.19	.275	.16	.015	60°	.11	.09	.225	.20	.225	.105	1/8"
1/4 B.S.F.	SP41 E	SP42 E	SP43 E	SP44 E	SP45 E	SP46 E	.260	.450	20	21	.25	.35	.22	.025	60°	.11	.10	.27	.24	.275	.115	1/8"
5/16 B.S.F.	SP41 G	SP42 G	SP43 G	SP44 G	SP45 G	SP46 G	.325	.530	20	21	.30	.425	.26	.03	60°	.14	.10	.33	.30	.335	.115	5/32"
3/8 B.S.F.	SP41 J	SP42 J	SP43 J	SP44 J	SP45 J	SP46 J	.395	.601	20	21	.34	.475	.295	.03	60°	.14	.14	.37	.34	.375	.155	3/32"
1/2 B.S.F.	SP41 L	SP42 L	SP43 L	SP44 L	SP45 L	SP46 L	.455	.715	20	20	.40	.54	.35	.045	60°	.17	.15	.42	.39	.425	.165	3/16"
5/8 B.S.F.	SP41 N	SP42 N	SP43 N	SP44 N	SP45 N	SP46 N	.520	.825	20	20	.465	.625	.405	.05	60°	.20	.15	.47	.44	.475	.165	7/32"
3/4 B.S.F.	SP41 P	SP42 P	SP43 P	SP44 P	SP45 P	SP46 P	.580	.925	20	20	.52	.67	.455	.05	80°	.20	.15	.545	.52	.55	.165	1/2"
7/8 B.S.F.	SP41 Q	SP42 Q	SP43 Q	SP44 Q	SP45 Q	SP46 Q	.645	1.070	20	20	.55	.70	.50	.05	80°	.20	.15	.57	.54	.575	.165	7/32"
1" B.S.F.	SP41 S	SP42 S	SP43 S	SP44 S	SP45 S	SP46 S	.770	1.200	20	20	.575	.81	.595	.05	90°	.23	.15	.67	.64	.675	.165	1/4"
1 1/8 B.S.F.	SP41 U	SP42 U	SP43 U	SP44 U	SP45 U	SP46 U	.895	1.305	20	20	.60	.875	.645	.05	90°	.26	.15	.795	.77	.80	.165	9/32"
1 1/4 B.S.F.	SP41 W	SP42 W	SP43 W	SP44 W	SP45 W	SP46 W	1.020	1.480	20	20	.65	.97	.735	.10	90°	.29	.15	.87	.84	.875	.165	5/16"

\* NOTE THESE WASHERS ARE APPROVED AS SUITABLE FOR USE WITH INSTRUMENT OR ELECTRICAL EQUIPMENT. BUT DO NOT COMPLY WITH AP 970 CHAP. 400 PARA. 7 STANDARD 'A' OR 'B'



TO SUIT BOLT SIZE	SPRING STEEL				PHOSPHOR BRONZE				SPRING STEEL				PHOSPHOR BRONZE				SPRING STEEL				
	PART NUMBER	DIA. 'Z'	DIA. 'Y'	DIM. 'X'	PART NUMBER	DIA. 'Z'	DIM. 'X'	DIM. 'Y'	PART NUMBER	DIA. 'Z'	DIM. 'X'	DIM. 'Y'	PART NUMBER	DIA. 'Z'	DIM. 'X'	DIM. 'Y'	PART NUMBER	DIA. 'A'	DIA. 'B'	DIM. 'D'	
6 B.A.	A.G.S. 2034 A	.175	.235	.018	A.G.S. 2037 A	.119	.014	.018	A.G.S. 2035 A	.119	.018	.255	SP 55 A	SP 56 A	.141	.237	.032	SP 47 A	.119	.056	.036
4 B.A.	A.G.S. 2034 B	.155	.315	.018	A.G.S. 2037 B	.155	.014	.018	A.G.S. 2035 B	.155	.018	.305	SP 55 B	SP 56 B	.172	.300	.032	SP 47 B	.140	.072	.036
2 B.A.	A.G.S. 2034 C	.205	.405	.024	A.G.S. 2037 C	.205	.021	.021	A.G.S. 2035 C	.197	.021	.405	SP 55 C	SP 56 C	.205	.365	.032	SP 47 C	.195	.092	.048
1/4 B.S.F.	A.G.S. 2034 E	.265	.505	.030	A.G.S. 2037 E	.268	.024	.024	A.G.S. 2035 E	.268	.024	.471	SP 55 E	SP 56 E	.281	.515	.040	SP 47 E	.238	.128	.056
5/16 B.S.F.	A.G.S. 2034 G	.335	.398	.030	A.G.S. 2035 G	.330	.030	.030	A.G.S. 2035 G	.330	.030	.605	SP 55 G	SP 56 G	.344	.576	.048	SP 47 G	.320	.140	.064
3/8 B.S.F.	A.G.S. 2034 J	.395	.692	.035	A.G.S. 2035 J	.385	.035	.035	A.G.S. 2035 J	.385	.035	.692	SP 55 J	SP 56 J	.408	.694	.048	SP 47 J	.385	.160	.072
1/2 B.S.F.	A.G.S. 2034 L	.455	.788	.040	A.G.S. 2035 L	.451	.035	.035	A.G.S. 2035 L	.451	.035	.776	SP 55 L	SP 56 L	.469	.757	.064	SP 47 L	.459	.176	.072
5/8 B.S.F.	A.G.S. 2034 N	.525	.875	.040	A.G.S. 2035 N	.515	.040	.040	A.G.S. 2035 N	.515	.040	.880	SP 55 N	SP 56 N	.516	.851	.064	SP 47 N	.510	.210	.080
3/4 B.S.F.	A.G.S. 2034 P	.580	.960	.040	A.G.S. 2035 P	.582	.040	.040	A.G.S. 2035 P	.582	.040	.976	SP 55 P	SP 56 P	.625	1.009	.064	SP 47 P	.610	.230	.092
7/8 B.S.F.	A.G.S. 2034 Q	.645	1.070	.045	A.G.S. 2035 Q	.647	.045	.045	A.G.S. 2035 Q	.647	.045	1.070	SP 55 Q	SP 56 Q	.656	1.072	.080	SP 47 Q	.656	.260	.104



TO SUIT BOLT SIZE	SPRING STEEL				MILD STEEL				LIGHT ALLOY				DISTANCE TUBES TO SUIT BOLT SIZES				
	PART NUMBER	DIA. 'Z'	DIA. 'Y'	DIM. 'X'	PART NO.	S.W.G.	PART NO.	S.W.G.	PART NO.	S.W.G.	PART NO.	S.W.G.	BOLT SIZE	TUBE S.W.G. & DIA. CLEAR.	TUBE S.W.G. & DIA. CLEAR.	ROV. ANGLE IS ON DIA.	DIA. CLEAR.
4 B.A.	A.G.S. 2036 A	.155	.300	.018	A.S. 2806	22	A.S. 2809	22	2 B.A.	1/4 x 22 G	.009	5/16 x 17 G	.015	5/8 x 20 G	.055	1/2 x 20 G	.055
2 B.A.	A.G.S. 2036 C	.192	.365	.021	A.S. 2807	20	A.S. 2810	20	1/4 B.S.F.	5/16 x 22 G	.006	3/8 x 17 G	.013	3/8 x 20 G	.053	1/2 x 20 G	.053
					A.S. 2808	17	A.S. 2811	17	3/8 B.S.F.	3/8 x 22 G	.007	1/2 x 17 G	.013	1/2 x 20 G	.053		

**WASHERS - LOCKING & DISTANCE TUBES (Iss. 6)**

THE DE HAVILLAND AIRCRAFT COMPANY LTD., HATFIELD, HERTS.

BOLT SIZE	SHRINKAGE				FACING			STANDARD			THICK			LARGE								
	NOT STAINLESS COMML PART N°	STAINLESS D.T.O. 271 PART N°	DIA. 'A'	DIA. 'B'	DIA. 'C'	DIA. 'A'	DIA. 'B'	DIA. 'C'	DIA. 'A'	DIA. 'B'	DIA. 'C'	DIA. 'A'	DIA. 'B'	DIA. 'C'	DIA. 'A'	DIA. 'B'	DIA. 'C'	DIA. 'C'	DIA. 'C'	DIA. 'C'	DIA. 'C'	
6 B.A.																						
4 B.A.																						
2 B.A.	DHS 33/1	DHS 187/1	15/64	.625	22	.071																
1/4 B.S.F.	DHS 33/2	DHS 187/2	17/64	.75	22	.085																
3/16 B.S.F.	DHS 33/3	DHS 187/3	21/64	.875	20	.099																
1/8 B.S.F.	DHS 33/4	DHS 187/4	25/64	1.1	19	.124																
1/16 B.S.F.	DHS 33/5	DHS 187/5	29/64	1.2	19	.136																
1/2" B.S.F.	NOTE - TWO SHRINKAGE WASHERS ARE TO BE USED ON EACH BOLT THESE WASHERS COMPRESS FLAT (THICKNESS OF GAUGE) WHEN BOLTED UP.																					
9/16 B.S.F.																						
5/8 B.S.F.																						
3/4 B.S.F.																						
7/8 B.S.F.																						
1" B.S.F.																						

C DHS 66 LARGE  
D DHS 69 SMALL  
(LAMINATIONS OF .002 OR .003)  
BRASS SPEC. ATTEWELL LB2

BOLT SIZE	SHIMS				BURRS				B.A. SIZES - LARGE				B.A. SIZES - SMALL											
	DIA. 'A'	DIA. 'B'	DIA. 'C'	DIA. 'D'	COPPER B.S. 899 PART N°	ALUMINUM B.S. L3 PART N°	DIA. 'A'	DIA. 'B'	DIA. 'C'	BRASS PART N°	STEEL PART N°	NON-CORRODING PART N°	DIA. 'A'	DIA. 'B'	DIA. 'C'	DIA. 'D'								
4 B.A.	15	1.0	1.4		AGS 190 AA	AGS 191 AA	1/16	.35	22	2 B.A.	SP 22 C	SP 23 C	SP 24 C	202	197	185	18	SP 25 C	SP 26 C	SP 27 C	202	197	185	21
2 B.A.	19	1.25	1.5		AGS 190 A	AGS 191 A	3/32	.4	22	4 B.A.	SP 22 B	SP 23 B	SP 24 B	157	152	152	19	SP 25 B	SP 26 B	SP 27 B	157	152	152	22
1/4 B.S.F.	26	1.25	1.6		AGS 190 B	AGS 191 B	1/8	.45	22	6 B.A.	SP 22 A	SP 23 A	SP 24 A	123	118	118	20	SP 25 A	SP 26 A	SP 27 A	123	118	118	23
3/16 B.S.F.	32	1.25	1.75		AGS 190 C	AGS 191 C	5/32	.55	22	8 B.A.	SP 22 Z	SP 23 Z	SP 24 Z	99	94	94	25	SP 25 Z	SP 26 Z	SP 27 Z	99	94	94	25
1/8 B.S.F.	38	1.5	1.9		AGS 190 D	AGS 191 D	3/16	.65	22	10 B.A.	SP 22 Y	SP 23 Y	SP 24 Y	78	73	73	27				78	73	73	
1/16 B.S.F.	44	1.5	1.0		AGS 190 E	AGS 191 E	1/4	.8	20	NOTE - THESE WASHERS ARE PRIMARILY FOR ELECTRICAL AND INSTRUMENT USE. USE B.A. SIZES OF SP10 TO 19 IN PREFERENCE.														
1/2" B.S.F.	51	1.5	1.15		AGS 190 F	AGS 191 F	5/16	.9	20															
					AGS 190 G	AGS 191 G	3/8	1.1	18															

CIRCULAR TYPE AS.1903  
SQUARE TYPE AS.1904

SADDLE WASHERS - ALUMINUM ALLOY (L1 OR L40)												SADDLE WASHERS - STEEL (S1 OR S92)															
MARK N°	DIA. 'A'	RAD. 'B'	DIA. 'C'	MARK N°	DIA. 'A'	RAD. 'B'	DIA. 'C'	MARK N°	DIA. 'A'	RAD. 'B'	DIA. 'C'	MARK N°	DIA. 'A'	RAD. 'B'	DIA. 'C'	MARK N°	DIA. 'A'	RAD. 'B'	DIA. 'C'	MARK N°	DIA. 'A'	RAD. 'B'	DIA. 'C'				
C6	3/16	3/8	1/2	E7	1/4	7/16	3/8	G8	5/16	1/2	3/4	J8	3/8	1/2	7/8	C6	1/2	3/8	E7	5/8	7/16	G8	3/4	1/2	J8	7/8	1/2
C7	3/16	7/16	1/2	E8	1/4	1/2	5/8	G9	5/16	9/16	3/4	J9	3/8	9/16	7/8	C7	1/2	7/16	E8	5/8	1/2	G9	3/4	9/16	J9	7/8	9/16
C8	3/16	1/2	1/2	E9	1/4	9/16	5/8	G10	5/16	5/8	3/4	J10	3/8	5/8	7/8	C8	1/2	1/2	C9	5/8	9/16	G10	3/4	5/8	J10	7/8	5/8
C9	3/16	9/16	1/2	E10	1/4	5/8	5/8	G11	5/16	11/16	3/4	J11	3/8	11/16	7/8	C9	1/2	9/16	E10	5/8	5/8	G11	3/4	11/16	J11	7/8	11/16
C10	3/16	5/8	1/2	E11	1/4	11/16	5/8	G12	5/16	3/4	3/4	J12	3/8	3/4	7/8	C10	1/2	5/8	E11	5/8	11/16	G12	3/4	3/4	J12	7/8	3/4
C11	3/16	11/16	1/2	E12	1/4	3/4	5/8	G13	5/16	13/16	3/4	J13	3/8	13/16	7/8	C11	1/2	11/16	E12	5/8	3/4	G13	3/4	13/16	J13	7/8	13/16
C12	3/16	3/4	1/2	E13	1/4	13/16	5/8	G14	5/16	7/8	3/4	J14	3/8	7/8	7/8	C12	1/2	3/4	E13	5/8	13/16	G14	3/4	1/8	J14	7/8	7/8
C13	3/16	13/16	1/2	E14	1/4	7/8	5/8	G15	5/16	15/16	3/4	J15	3/8	15/16	7/8	C13	1/2	13/16	E14	5/8	7/8	G15	3/4	15/16	J15	7/8	15/16
C14	3/16	7/8	1/2	E15	1/4	15/16	5/8	G16	5/16	1	3/4	J16	3/8	1	7/8	C14	1/2	7/8	E15	5/8	15/16	G16	3/4	1	J16	7/8	1
				E16	1/4	1	5/8												E16	5/8	1						

WASHERS - PLAIN & SADDLE (Iss. 2)